

Lever Action Hand Pump

User's Manual



MODEL NO.: 3957824

Specification

Fits 15 to 55 Gallon Drums, Mounting Threads 2" NPT	
Pumping capacity	34L/9G per 100 strokes
Spout thread	3/4" (Standard garden hose thread)
Suction intake Diameter	7/8"
Suction tube Length	18-1/8" to 35"
Stroke length	6-7/8"
Handle length	12-3/8" L x 1-1/4" W
Weight	4-1/2 Lbs.

Save This Manual

You will need the manual for the safety warnings and precautions, assembly instructions, operating and maintenance procedures, parts list and diagram. Keep your invoice with this manual. Write the invoice number on the inside of the front cover. Keep the manual and invoice in a safe and dry place for future reference.

⚠ WARNINGS AND PRECAUTIONS

WARNING: When using the pump, basic safety precautions should always be followed to reduce the risk of personal injury and damage to equipment. Read all instructions before using this pump!

- 1. Keep work area clean.**
- 2. Observe appropriate work area conditions.** Do not use the pump in damp or wet locations. Don't expose to rain. Keep work area well lighted.
- 3. Keep children away.** Children must never be allowed in the work area. Do not let them handle the pump. Locate the pump in an area out of reach of children.
- 4. Store idle equipment.** When not in use, the pump must be stored in a dry location to inhibit rust. Always lock up the pump and keep out of reach of children.

5. **Use the right tool for the job.** Do not attempt to force a small pump or attachment to do the work of a larger industrial pump. There are certain applications for which this pump was designed. It will do the job better and more safely at the rate for which it was intended. Do not modify this pump and do not use this tool for a purpose for which it was not intended.
6. **Dress properly.** Do not wear loose clothing or jewelry as they can be caught in moving parts. Protective, electrically non-conductive clothes and non-skid footwear are recommended when working. Wear restrictive hair covering to contain long hair.
7. **Use eye protection.** Always wear ANSI approved impact safety goggles.
8. **Do not overreach.** Keep proper footing and balance at all times. Do not reach over or across running machines.
9. **Maintain pump with care.** Keep the pump clean for better and safer performance. The handle must be kept clean, dry, and free from oil and grease at all times.
10. **Check for damaged parts.** Before using any pump, any part that appears damaged should be carefully checked to determine that it will operate properly and perform its intended function. Check for alignment and binding of moving parts, any broken parts or mounting fixtures and any other condition that may affect proper operation. Any part that is damaged should be properly repaired or replaced by a qualified technician.
11. **Replacement parts and accessories.** When servicing, use only identical replacement parts. Use of any other parts will void the warranty. Only use accessories intended for use with this tool.
12. **Do not operate pump if under the influence of alcohol or drugs.** Read warning labels if taking prescription medicine to determine if your judgement or reflexes are impaired while taking drugs. If there is any doubt, do not operate the pump.
13. **Maintenance.** For your safety, maintenance should be performed regularly by a qualified technician.

Warnings!

This product should not be used for fluid transfer into aircraft.

This product is not suited for use with fluids for human consumption or fluids containing water.

Fluid compatibility

If in doubt about compatibility of a specific fluid, contact supplier of fluid to check for any adverse reactions to the wetted materials.

The pump is compatible with the following fluids:

- Diesel, Kerosene, Light oils, Mineral spirits

Do not use the pump with the following fluids:

- Gasoline, Water, Sulfuric acid, Naphtha, Methanol, Methyl Ethyl Ketone(MEK), Acetone, Ammonia, Benzene, Bleach, Chlorine.

Important!

It is normal if there is tension or relaxation inside the piston rod nut (no. 5) on the top of barrel pump. Adjust with spanner appropriately before using.

Operation

Warning!! Flammable danger. Keep the barrel pump and fluids away from all ignitable sources and flammable materials.

1. To reach fluid at the bottom of a standard 55 gallon drum, the **suction tube (#26)** must extend to the bottom of the drum. To adjust the **suction tube**, twist and loosen the **drum adapter (#25)**, allowing the **suction tube (#26)** to telescope to the height you need. Then, tighten the **drum adapter (#25)**. Insert the suction tube into the drum through the opening in the drum cover. The **drum adapter (#25)** will pressure fit onto the drum cover opening.
2. Put a container under the **spout (#3)** or attach a standard hose (3/4" spout thread) to the **spout (#3)** and run the hose to the container.

3. Make sure the **telescopic tube (#28)** is completely submerged in the liquid you are going to transfer.
4. Pump the **handle (#7)** steadily to begin the liquid transfer.
5. Pump until the pump runs dry. Remove the pump and wipe it dry.

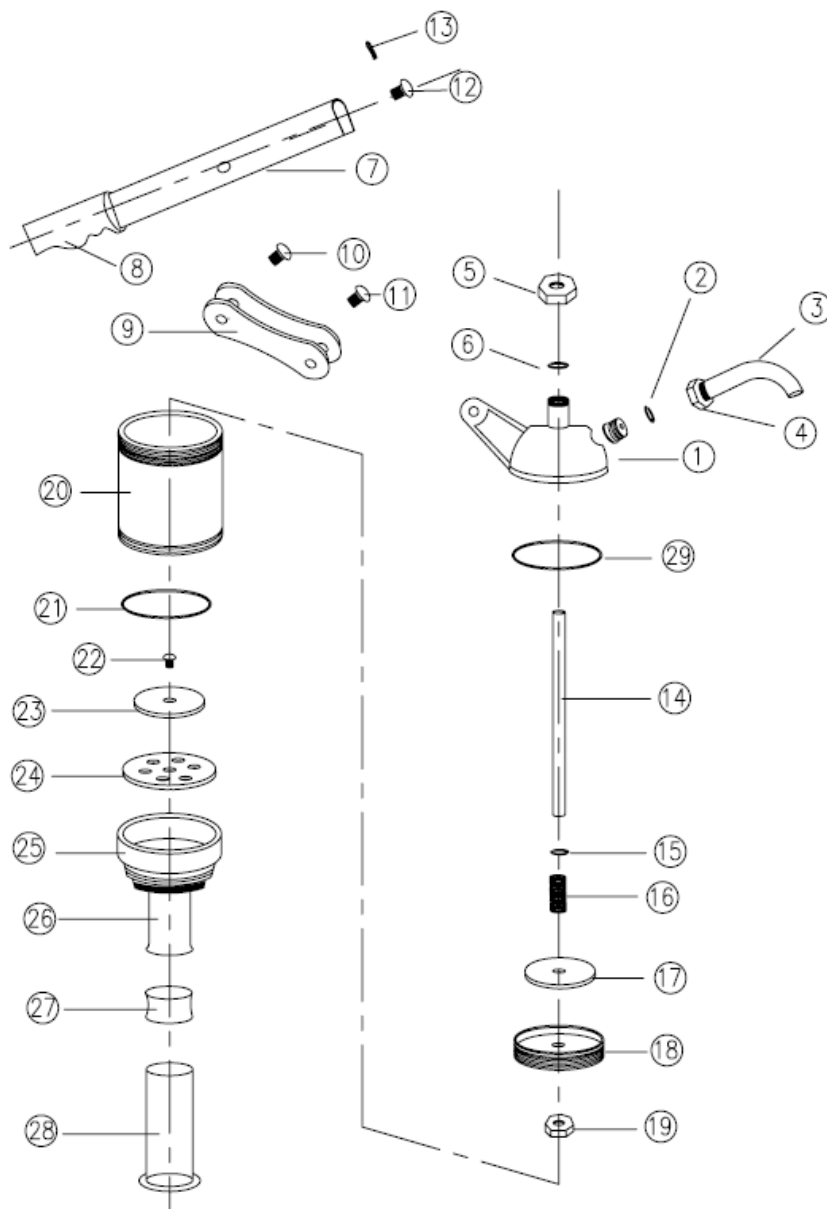
Notes:

1. If the drum has water or other residue on the bottom, try to avoid running them through the pump. Raise the **oil intake (#6)** above the water or residue.
2. If you use a shorter drum, adjust the **suction tube (#26)** by twisting and loosening the **drum adapter (#25)** and then the **suction tube (#26)** telescope to the height you need. Then, tighten the **drum adapter (#25)**.

Maintenance

1. Periodically, use a light lubricant on the **handle (#7)** pivot parts.
2. Keep the **telescopic tube (#28)** and the **spout (#3)** free of dirt and debris.
3. Wipe down the unit after each use and store in a dry place.

Diagram & Parts List



Part No.	Description	Quantity	Part No.	Description	Quantity
1	Pump head	1	16	Valve spring	1
2	Spout seal	1	17	Valve plate	1
3	Spout	1	18	Valve base	1
4	Coupling nut	1	19	Valve nut	1
5	Piston rod nut	1	20	Barrel	1
6	Piston rod seal	1	21	Foot valve seal	1
7	Handle	1	22	Base plate rivet	1
8	Coated vinyl grip	1	23	Base plate A	1
9	Handle level	2	24	Base plate A	1
10	Lever rivet	1	25	Drum adapter	1
11	Lever rivet	1	26	Telescopic tube	2
12	Handle lever	1	27	Telescopic tube seal	1
13	Split pin	1	28	Telescopic tube	1
14	Piston rod	1	29	Barrel gasket	1
15	O ring	1			