

Wabbitat[®] The Perfect Rabbit Habitat

Models 151, 157



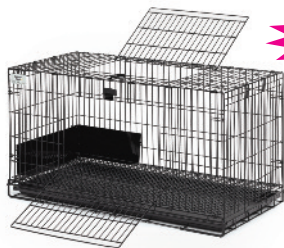
- Sets Up **Complete in Seconds**
No Tools or Connecting Pieces Required
- Unique Design Provides Versatile **Top and Front Door Access**
- Secure *Slide-Latch* Allows for **One-Handed Door Operation**
- Easy to Slide-Out and Clean, Front Access Durable Plastic Pan
- .5 in/1.27 cm Grid Mesh Floor Supports/ Hygienically Protects Rabbit's Hocks
- Black Electro-Coat Finish Provides Long Lasting Protection

Model 151

25 W x 19 D x 20 H in
63 W x 48 D x 51 H cm



Accessories Not Included



**Now
Included**

All Models Include Urine Guard

Helps Shield Surrounding
Area from Urine Splash

Model 157

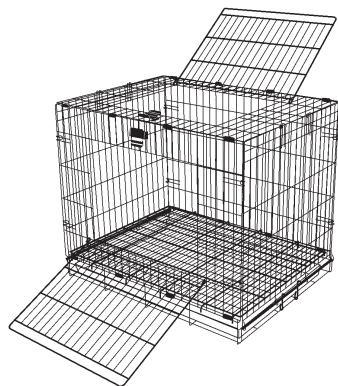
37 W x 19 D x 20.5 H in
94 W x 48 D x 52 H cm

Because Life Goes Better with Pets[®]

MidWest[®]
Homes For Pets

Wabbitat®

All UPS Shippable



Model 151

The **Perfect** Rabbit Habitat with Urine Guard

Size: 25 L x 19 W x 20 H"

63 L x 48 W x 51 H cm

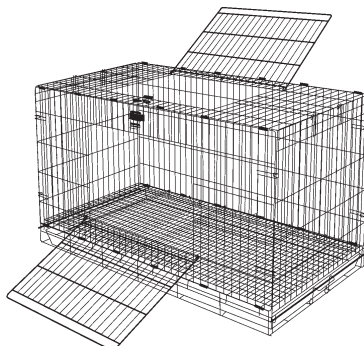
Mesh: 1" x 4" 2.54 x 10.2 cm

Wire Gauge: 3, 9, 12, 13

Weight: 12 lbs (16 w/carton)

5.4 kg (7.3 w/carton)

Finish: Black Electro-Coat



Model 157

The **Bigger is Better** Rabbit Habitat with Urine Guard

Size: 37 L x 19 W x 20.5 H"

94 L x 48 W x 52 H cm

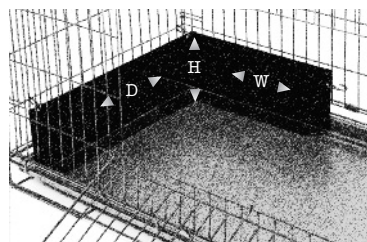
Mesh: 1" x 4" 2.54 x 10.2 cm

Wire Gauge: 3, 9, 12, 13

Weight: 18 lbs (21 w/carton)

8.2 kg (9.5 w/carton)

Finish: Black Electro-Coat



Model 150UG Urine Guard

Size: 5 H x 16 D x 12.75 W"

13 H x 41 D x 32 W cm

Finish: Black Powder Coat

Weight: 1.25 lbs (2 w/carton)

.56 kg (1 w/carton)



Visit Our Website
For a Complete Listing of Products

**Wire Crates • Plastic Carriers
Ex Pens • Barriers • Kennels ...**

www.midwesthomes4pets.com

P.O. Box 1031 Muncie, IN 47308 USA Made in China

800 428 8560 PART# 5032 (153)


MidWest®
Homes For Pets