



ECONO-AG SERIES

SELF-PRIMING CENTRIFUGAL PUMPS FOR AGRICULTURE



The Econo-Ag Pump is the original thermoplastic self-priming centrifugal pump for agriculture with the highest flow of any comparable plastic pump on the market.

- Housing, volute and impeller: glass-reinforced polyester.
- Rubber parts: EPDM
- Shaft seal: stainless steel with carbon and ceramic faces, EPDM fitted.
- All external and internal fasteners: stainless steel
- Maximum working pressure: to 50 psi
- Maximum flow: to 200 GPM
- Shipping weight:
44 lbs. for 1½" or 2", 550 series engine driven
49 lbs. for 2", 950 series engine driven pump
- Consult Factory for optional 'PROTEK' Engine Protection System

PACER PUMPS fitted with all EPDM rubber parts can be used for:

Atrazine	Honcho
Bicep	Lannate
Bladex	Lasso
Bronco	Modown
Bullet	N-Serve 24
Liquid Nitrogen Solutions	Pathway
Phosphoric Acid Solutions	Ranger
Dual	Roundup
Extrazine	Sevin 4 Oil
Fallowmaster	

NOTE:

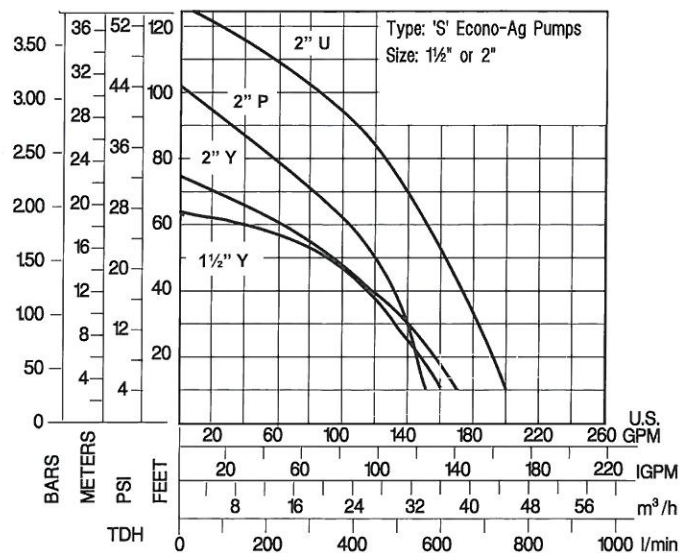
Some agricultural chemicals and certain carriers require a pump fitted with all Viton® rubber parts. These chemicals include:

Banvel	Pathfinder	* Consult Factory for use with chemicals not listed
Dimethoate	Sutan	
Eptam	Treflan	
Lorsban		

To order an all Viton fitted pump, change the sixth digit of the model number listed below from L to V. Consult factory for Viton fitted pricing. Never use gas engine driven or other non-explosion proof powered pumps for pumping flammable liquids such as gasoline. AN EXPLOSION AND SERIOUS INJURY MAY RESULT IF THIS WARNING IS IGNORED. For safe operation, read and follow all safety precautions in Operator's Manual. Consult Factory for specific liquid handling recommendations.

MODEL NUMBERS AND FLOW RATES

MODEL NUMBER	PORT SIZE/CURVE	cc	FLOW @ 10' TDH
SE1½YL E550	1½"/Y	127	160 GPM
SE1½PL E550	1½"/P	127	150 GPM
SE2YL E550	2"/Y	127	170 GPM
SE2PL E550	2"/P	127	150 GPM
SE2UL E950	2"/U	205	200 GPM



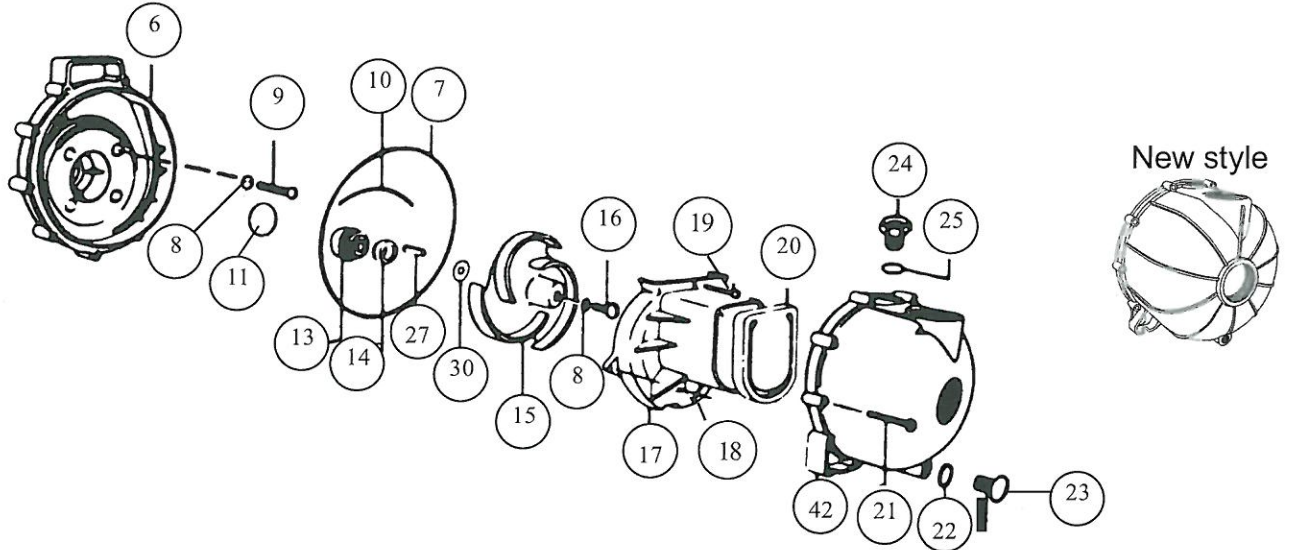
PACER ECONO-AG

PARTS LIST
PP-9905-J
April 2014

CARING FOR PACER PUMPS:

When handling agricultural fertilizer and chemicals, flush pump with fresh, clean water immediately after use. Before storing pump, flush with fresh clean water and drain completely.

EPDM rubber components are not compatible with petroleum products. Do not use petroleum products when preparing pump for storage.



REF. NO.	DESCRIPTION	QTY/PUMP	SE1½YL E550 SE2YL E550	SE1½PL E550 SE2PL E550	SE2UL E950
6	Bracket	1	P-58-0703 30B	P-58-0703 30B	P-58-0703 30B
7	'O'-ring, body	1	P-58-0719 72	P-58-0719 72	P-58-0719 72
8	'O'-ring, screw	5	P-58-0717 72	P-58-0717 72	P-58-0717 72
9	Screw, bracket	4	P-58-0715 10	P-58-0715 10	P-58-0715 10
10	'O'-ring, segment	1	P-58-0754 72	P-58-0754 72	P-58-0754 72
11, 13 & 14	Shaft seal & 'O'-ring	1	P-58-0714 12	P-58-0714 12	P-58-0714 12
15	Impeller	1	P-58-0974 30	P-58-0704 30	P-58-0706 30
16	Screw, impeller	1	P-58-0716 10	P-58-0716 10	P-58-0716 10
17	Volute	1	P-58-0954 30	P-58-0702 30	P-58-702 30
18	Screw, side volute	2	P-58-0725 10	P-58-0725 10	P-58-0725 10
19	Screw, top volute	1	P-58-0997 10	P-58-0771 10	P-58-0771 10
20	Check valve	1	P-58-0705 72	P-58-0705 72	P-58-0705 72
21	Screw, body	10	P-58-1206 10	P-58-1206 10	P-58-1206 10
22	'O'-ring, drain plug	1	P-58-1009 72	P-58-1009 72	P-58-1009 72
23	Plug, drain	1	P-58-0723 30	P-58-0723 30	P-58-0723 30
24	Plug, filler	1	P-58-0722 30B	P-58-0722 30B	P-58-0722 30B
25	'O'-ring, filler plug	1	P-58-0765 72	P-58-0765 72	P-58-0765 72
27	Key	1	P-58-0718 30	P-58-0718 30	P-58-0718
30	Shim	As required	P-58-0778 11 (.006") P-58-0778 12 (.015") P-58-0778 13 (.030")	P-58-0778 11 (.006") P-58-0778 12 (.015") P-58-0778 13 (.030")	P-58-0778 11 (.006") P-58-0778 12 (.015") P-58-0778 13 (.030")
42	Body	1	P-58-1001 30B (1½") P-58-1002 30B (2")	P-58-1001 30B (1½") P-58-1002 30B (2")	P-58-1002 30B

PACER PUMPS

Division of ASM Industries, Inc.

41 Industrial Circle 717-656-2161
Lancaster, PA 17601-5927 U.S.A. 800-233-3861
Email: sales@pacerpumps.com FAX: 717-656-0477
www.pacerpumps.com