



SE2PL E550 ECONO-AG SERIES

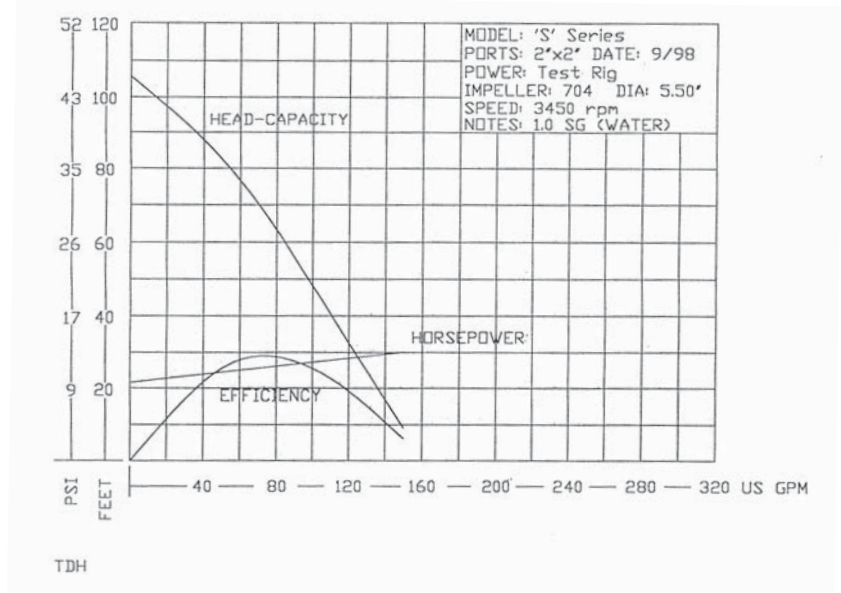
A SELF-PRIMING CENTRIFUGAL PUMP FOR AGRICULTURE



Features:

- Corrosion resistant glass reinforced polyester.
- EPDM elastomers are standard.
- Stainless steel fasteners
- Maximum flow to 150 U.S. GPM.
- Maximum TDH to 95 feet.
- Suction lift to 25 feet.
- 2" NPT ports standard.
- Double flush volute with built-in check valve.
- Lightweight and portable with molded carry handle.
- Briggs & Stratton Series 550 OHV gas engine with cast iron cylinder sleeve.*

PERFORMANCE CURVE



UPC# 0 95616 120440

PUMP SPECIFICATIONS

CURVE	MODEL	PORT SIZE	MAX. FLOW	MAX. TDH	ENGINE	WEIGHT
P	SE2PL E550	2"	150 GPM	95 ft.	Briggs & Stratton Series 550 OHV engine	40 lbs

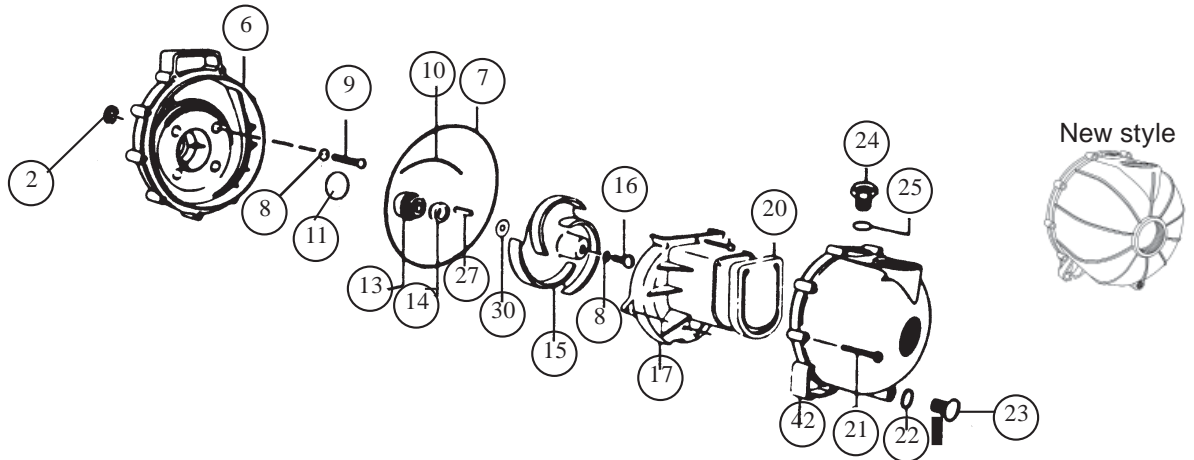
*Briggs & Stratton engines are backed by a network of thousands of authorized service centers.

PACER ECONO-AG

CARING FOR PACER PUMPS:

When handling agricultural fertilizer and chemicals, flush pump with fresh, clean water immediately after use. Before storing pump, flush with fresh clean water and drain completely.

EPDM rubber components are not compatible with petroleum products. Do not use petroleum products when preparing pump for storage.



REF. NO.	DESCRIPTION	QTY/PUMP	SE2PL E550
2	Engine protection gasket	1	P-58-0933 72
6	Bracket	1	P-58-0703 30B
7	'O'-ring, body	1	P-58-0719 72
8	'O'-ring, screw	5	P-58-0717 72
9	Screw, bracket	4	P-58-0715 10
10	'O'-ring, segment	1	P-58-0754 72
11, 13 & 14	Shaft seal & 'O'-ring	1	P-58-0714 12
15	Impeller	1	P-58-0704 30
16	Screw, impeller	1	P-58-0716 10
17	Volute	1	P-58-0702 30
18	Screw, side volute	As required	P-58-0725 10
20	Check valve	1	P-58-0705 72
21	Screw, body	10	P-58-1206 10
22	'O'-ring, drain plug	1	P-58-1009 72
23	Plug, drain	1	P-58-0723 30
24	Plug, filler	1	P-58-0722 30B
25	'O'-ring, filler plug	1	P-58-0765 72
27	Key	1	P-58-0718 30
30	Shim	As required	P-58-0778 11 (.006")
	"		P-58-0778 12 (.015")
	"		P-58-0778 13 (.030")
42	Body	1	P-58-1002 30B

F.O.B. Lancaster, Pennsylvania

PACER PUMPS

Division of ASM Industries, Inc.

41 Industrial Circle
Lancaster, PA 17601-5927 U.S.A.
Email: sales@pacerpumps.com

717-925-8240
800-233-3861
FAX: 717-925-8242

www.pacerpumps.com