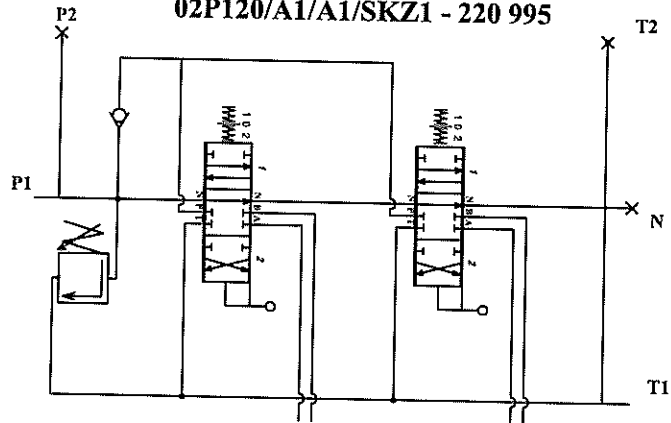


02P120/A1/A1/SKZ1 - 220 995



ITEM	PART NO.	DESCRIPTION	QTY.
1	449.00.01-03	Valve body /02P120	1
2	438.10.00	Main relief valve	1
3	438.05.00	Spool positioner I - spring to neutral	2
4	438.00.06	Spool A, Double acting and closed at neutral	2
5	DIN3771	O-ring 25x3,5 NBR70	4
6	438.02.00	Check valve	1
7	438.08.00	Plug M36x1.5	1
8	438.09.00	Lever system	2
9	-	Custom plate	1
10	438.11.00	Lever	2
11	DIN660	Rivet 2x4	2
12	438.00.04	Washer	4

SPECIFICATIONS	
NOMINAL FLOW RATE	32 gpm (120 lpm)
OPERATING PRESSURE (MAX.)	3625 psi (250 bar)
PRESSURE AT PORTS A,B (MAX.)	4350 psi (300 bar)
BACK PRESSURE AT T(MAX.)	725 psi (50 bar)
LEAKAGE (A, B - T)	8 ccm/min at 1740 psi (100 bar)
RELIEF VALVE SETTINGS	2500 psi at 10gpm (172 bar at 37.8 l/min)
PORTS P, A, B, AND T	1 5/16-12 UN (SAE 16)
PORT N	M36x1,5
SHIPPING WEIGHT	29,1 lbm (13,2 kg)