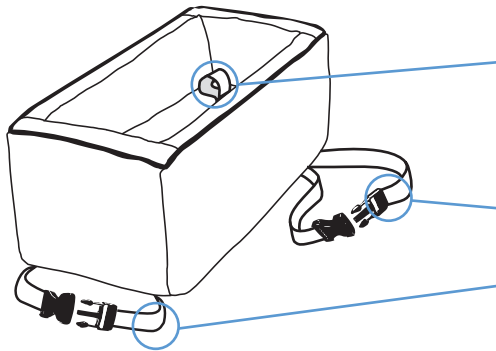




## Snoozer® Console Lookout Car Seat instructions for all styles and sizes



Console seats are secured to the vehicle's console while the pet is attached with a safety strap from the seat to the pet's harness. Both seats have four straps:

**Safety Strap:**

The safety strap (which is centered and threaded into the rear of the console and is the connection point for the containment straps underneath) attaches the dog to the seat.

**Containment Straps: (one on each side)**

The containment straps are the straps that anchor the seat to the car.

**Front Strap:**

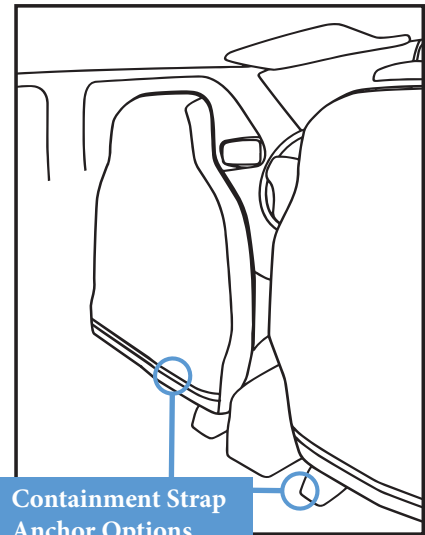
The front strap goes under the lid of the console preventing the seat from tilting to the rear.

### Installation


- Open the **Containment Straps** and remove them from the **Safety Strap** loops.
- Thread it between the upper seat cushion and lower seat cushion on both the driver and passenger seats adjacent to the console.

*There should be a metal support that the containment strap can go around and then be re-connected making a circle. Another, perhaps better option for the containment strap could be the seat post on the floor of the vehicle again reconnecting to form a circle. Once in position you may chose to leave it there permanently.*

- Place the seat on the console with the **Safety Strap** to the back end and the front strap facing forward.
- Lift the console lid and wrap the single front strap under the lid and tighten.  
*When the console snaps shut this strap simply prevents the console from tilting and is not intended as security in braking or accidents.*
- Next, open the **Containment Straps** previously installed and reattach them to the **Safety Strap** loops on the underside of the seat. Adjust the straps to tighten the seat to the console.
- Once the seat is in place, the clasp on the **Safety Strap** is attached to your pet by his **HARNES**. **DO NOT ATTACH TO A COLLAR.**
- Tighten the safety strap to keep your pet in the seat until they realize its comfort.
- To remove the seat, simply open the buckle on the containment strap and remove the seat. Close the buckles and leave the containment straps in place for use later.



To wash, remove cover. Machine wash cover in warm water.  
Do not bleach. Tumble dry low and remove promptly.



O'Donnell Industries, Inc.  
561 Bessie Road  
Piedmont, SC 29673  
(800) 635-9755