

ILLUSTRATED PARTS LIST

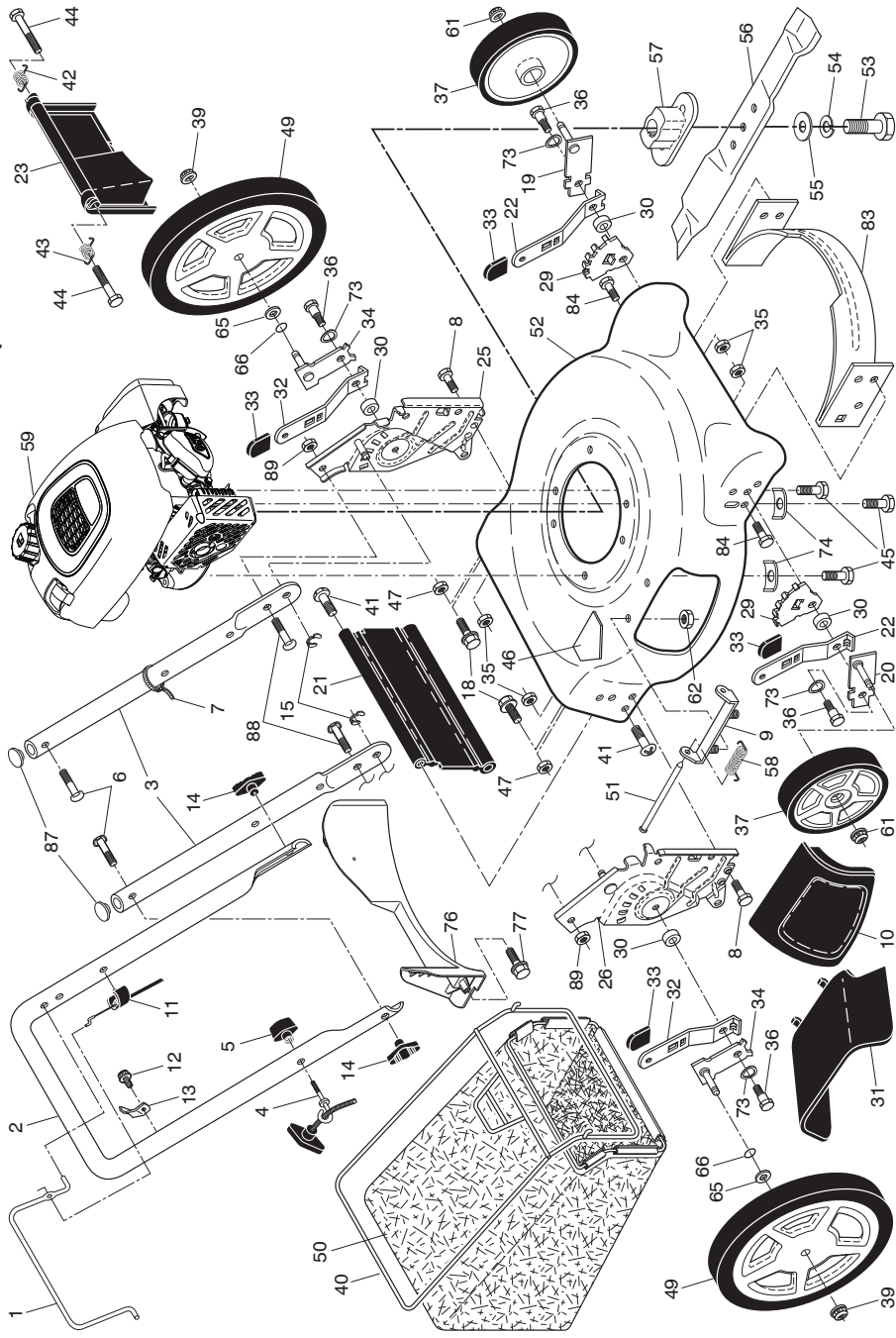
**POULAN<sup>®</sup>PRO**

**ROTARY LAWN MOWER**

**MODEL NUMBER: PR150N21RH3**

**MFG. ID. NUMBER: 96132010700**

**POULAN PRO LAWN MOWER - - MODEL NUMBER PR150N21RH3 (MFG. ID. NO. 96132010700)**



2

**POULAN PRO LAWN MOWER - - MODEL NUMBER PR150N21RH3 (MFG. ID. NO. 96132010700)**

KEY NO.	PART NO.	DESCRIPTION	KEY NO.	PART NO.	DESCRIPTION	KEY NO.	PART NO.	DESCRIPTION
1	532 44 73-65	Control Bar	30	532 40 16-29	Spacer	56	532 40 67-12	21" Blade
2	532 44 82-63	Upper Handle	31	532 16 57-60	Discharge Deflector	57	581 54 79-01	Blade Adapter
3	580 63 86-02	Bar, Lower Handle	32	532 44 15-59	Selector Spring, Rear	58	532 15 21-24	Hinge Spring
4	581 90 21-01	Rope Guide	33	532 08 78-77	Selector Knob	59	588 84 35-09	Engine, Ratio,
5	581 91 26-01	T-Knob	34	588 91 26-02	Axle Arm Assembly, Rear	61	532 40 91-48	Model Number RV150
6	532 19 15-74	Handle Bolt	35	532 42 65-89	Locknut, Hex 5/16-18	62	873 80 04-00	Flanged Locknut
7	532 06 64-26	Wire Tie	36	532 40 16-38	Shoulder Bolt 5/16-18	65	532 08 83-48	Nut, Hex
8	874 78 05-12	Bolt, Hex Head 5/16-18 x 3/4	37	532 19 79-85	Wheel & Tire Assembly, Front, 8 x 1-3/4	66	532 19 74-80	Washer, Flat
9	532 15 41-32	Hinge Bracket	39	532 40 91-49	Nut, Hex	73	532 40 16-30	O-Ring
10	532 16 57-54	Mulcher Door	40	532 41 19-49	Frame, Grassbag	74	532 12 50-78	Washer, Curved, Cylindrical
11	532 44 09-34	Engine Zone Control Cable	41	532 19 41-86	Screw, Hinge	76	589 41 68-04	Washer, Special, Engine
12	532 17 88-48	Hex Washer Head Screw #10-16 x 5/8	42	532 40 54-21	Spring, LH	77	817 41 13-12	Baffle, Rear
13	532 43 00-34	Up-Stop Bracket	43	532 40 54-23	Spring, RH	83	532 42 85-01	Screw, Rear Baffle
14	532 19 19-38	Handle Knob	44	532 18 41-93	Bolt, Rear Door	84	817 00 05-10	Baffle, Front
15	812 00 00-36	Klip Ring	45	532 15 04-06	Hex Head Thread Rolling Screw 3/8-16 x 1	87	532 43 75-16	Screw, Hex Head 5/8-16
18	817 60 04-06	Screw	46	532 18 21-66	Danger Decal	88	586 21 25-01	Plug, Handle Bar
19	532 40 66-89	Axle Arm Assembly, Front, LH	47	532 75 11-53	Nut, Hex	89	873 97 05-00	Bolt, Carriage
20	532 40 66-90	Axle Arm Assembly, Front, RH	49	588 15 48-03	Wheel & Tire Assembly, Rear, 11 x 1-3/4	--	581 27 63-01	Locknut, Hex, Flanged
21	590 82 61-01	Rear Skirt	50	582 26 90-02	Grassbag	--	532 18 21-91	Bag of Parts (Includes Key Numbers 88 and 89)
22	532 40 64-28	Selector Spring, Front	51	532 14 72-86	Hinge Rod	--	115 58 77-27	Warning Decal (not shown)
23	532 41 06-03	Rear Door Assembly	52	581 70 83-25	Kit, Housing (Includes #46)	--	115 58 77-31	Operator's Manual, English
25	588 91 24-05	Handle Bracket, LH	53	532 85 10-84	Screw, Hex Head, Grade 8 3/8-24 x 1-3/8	--	115 58 77-46	Operator's Manual, French
26	588 91 24-02	Handle Bracket, RH	54	532 85 02-63	Helical Lockwasher			Operator's Manual, Spanish
29	532 41 05-94	Wheel Adjusting Bracket	55	532 85 10-74	Hardened Washer			

3

**IMPORTANT:** Use only Original Equipment Manufacturer (O.E.M.) replacement parts. Failure to do so could be hazardous, damage your lawn mower and void your warranty.

**NOTE:** All component dimensions given in U.S. inches. 1 inch = 25.4 mm.

Failure to do so could be hazardous, damage your lawn mower and void your warranty.