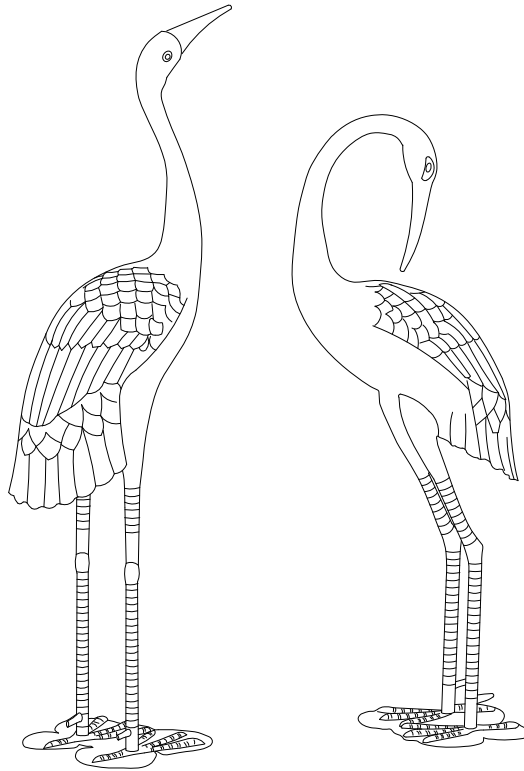


ASSEMBLY INSTRUCTIONS

ITEM# L-GF002PCA



NOTE:



For safety and stability purposes, this item is intended for use with the ground stakes, well secured into the ground.


CARE INSTRUCTIONS:

Clean gently with environmentally-friendly soap solution and water using a sponge. Do not use abrasive materials, wire brushes, chemicals, cleansers or bleach. Do not use a pressure washer. Rinse well. Allow to air dry.

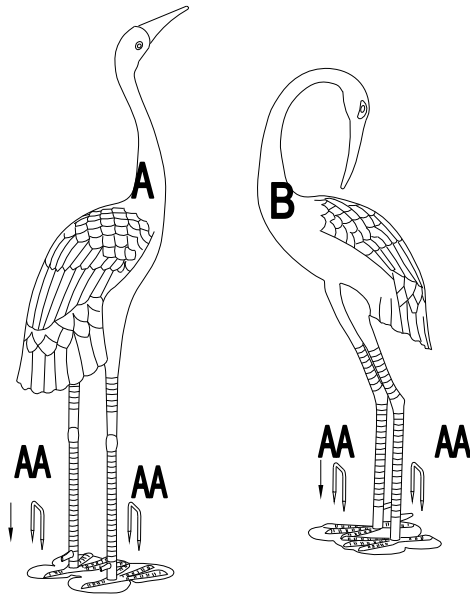
If there are nicks, chips and scratches, go to your local hardware store or home center and obtain a closest match touch-up paint suitable for outdoor metal use. Follow instructions that come with the paint.

Important: For technical assistance on assembly or replacement parts, please call Sunjoy Industries at 1(866) 578-6569 from 8:00 AM EST to 8:00 PM PST. You may email to customer.care@sunjoygroup.com or visit www.sunjoyonline.com to place your order or fax your parts replacement order form (which is included in the packaging) together with your purchase receipt to 1 (740) 283-3549 for assistance.

| Parts List | | | |
|------------|----------------------|-----|---|
| Part# | Description | QTY | Image |
| A | Crane with head up | 1 |  |
| B | Crane with head down | 1 |  |

| Parts List | | | |
|------------|-------------------|-----|---|
| Part# | Description | QTY | Image |
| AA | Stake 50x135xD6mm | 4 |  |

ASSEMBLY STEPS:



1. Choose a level location for set up. It is recommended that you choose a location that can accommodate ground stakes.
2. Place Crane in desired location.
3. Insert 2 ground stakes (included) through the holes on feet (1 at the front & 1 at the back) to secure Crane (A). Repeat this step for the other crane.
4. If necessary, use a rubber mallet to completely secure the ground stakes into the ground.
5. Depending upon soil conditions, adjusting stakes from time-to-time may be required.