



RIDE-N-REST

MODEL: RR605B

⚠ WARNING

READ ALL INSTRUCTIONS BEFORE USING THE RIDE-N-REST
NOTE: Failure to read instructions before use could result in injury or death.

Instructions for Installation and Use:



FIG. 1

CONTENTS:SEE FIG. 1

- 4 – SLIDING MOUNTING BRACKETS
- 4 – RIV-NUT PLATES
- 4 – 2” QUICK CLIP PINS
- 6– 1” MULTI PLUGS
- 8 – 1-4” X 2 3/4” BOLTS
- 8 – 1/4” X 1 3/4” BOLTS
- 8 – FLAT WASHERS
- 1 - RIDE-N-REST FRAME ASSEMBLY WITH CUSHION

STEP 1 –
SLIDE THE 4 MOUNTING BLOCKS ONTO HORIZONTAL BARS OF RIDE-N-REST FRAME. SEE FIG. 2

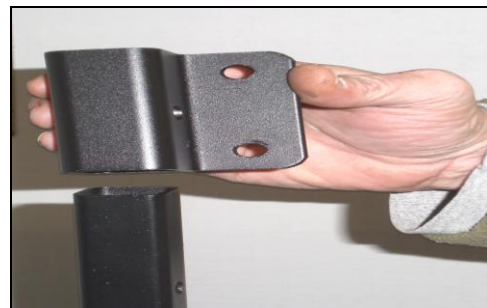


FIG. 2



FIG. 3

STEP 2 –
ATTACH 4 SLIDING MOUNTING BLOCKS IN DESIRED POSITIONS USING 4 QUICK CLIP PINS PROVIDED. SEE FIG. 3

STEP 3 –
USING A RUBBER MALLET OR HAMMER, DRIVE THE 6 – 1” MULTI PLUGS INTO OPEN ENDS OF THE HORIZONTAL BARS OF THE RIDE-N-REST FRAME. SEE FIG. 4



FIG. 4



FIG. 5

STEP 4 –
POSITION RIDE-N-REST FRAME ONTO CENTER OF ATV REAR RACK TO MAKE SURE THE 4 SLIDING MOUNTING BLOCKS ARE IN THE PROPER POSITION FOR RIDE-N-REST TO BE SECURED TO ATV RACK. SEE FIG. 5

STEP 5 –
ATTACH RIDE-N-REST SLIDING MOUNTING BLOCKS TO ATV RACK USING 4 – RIV-NUT PLATES, 8 – FLAT WASHERS AND 8 – 1/4” X 1 3/4” BOLTS **OR** 8 – 1/4” X 2 3/4” BOLTS (DEPENDING ON THICKNESS OF ATV RACK). FINGER TIGHTEN BOLTS UNTIL SNUG, BUT NOT COMPLETELY TIGHT. SEE FIG. 6

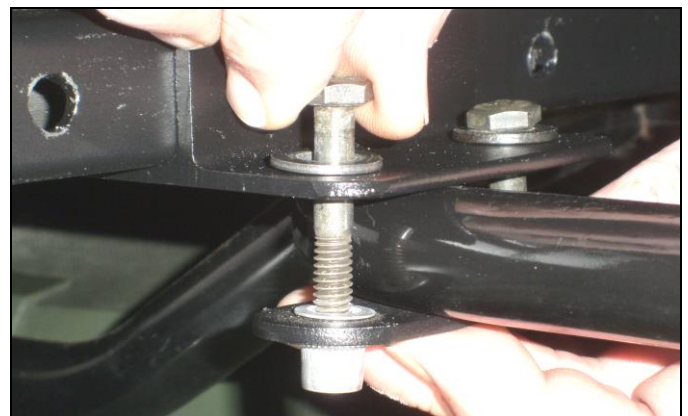


FIG. 6



FIG. 7

STEP 6 –

RE-CHECK RIDE-N-REST TO BE SURE IT IS CENTERED ON ATV RACK AND TIGHTEN BOLTS SECURELY USING A 7/16” WRENCH.

SEE FIG. 7

STEP 7 –

TO SECURE RIDE-N-REST CUSHION, REMOVE THE 2 FRONT QUICK CLIP PINS FROM THE MOUNTING BLOCKS, PIVOT CUSHION TO DESIRED ANGLE AND PIN VERTICAL SUPPORT BARS TO HORIZONTAL FRAME BARS THEN REPLACE QUICK CLIP PINS. **SEE FIG. 8**

8



FIG. 8

STEP 8 –

TO LAY BACKREST IN HORIZONTAL POSITION REMOVE 2 QUICK CLIP PINS FROM VERTICAL SUPPORT BARS, LAY BACKREST FLAT AND REPLACE QUICK CLIP PINS INTO SLIDING MOUNTING BLOCKS.

SEE FIG. 9



FIG. 9

⚠ WARNING

NEVER USE THE RIDE-N-REST FOR ANY PURPOSE OTHER THAN INTENDED.

For more information about this or other products, contact us at:

Great Day, Inc.

604 Kimbrough Dr. * Tallulah, LA 71282 * (866) 649-1918 * www.greatdayinc.com