



“QUICK DRAW” POLARIS MOUNTING PLATE
MODEL: QD800PMP2
FITS POLARIS RANGER 400, 500 & 800 MID SIZE

⚠ WARNING

READ ALL INSTRUCTIONS BEFORE INSTALLING POLARIS PLATE.
NOTE: Failure to read instructions before use could result in injury or death.

Instructions for Installation and Use:

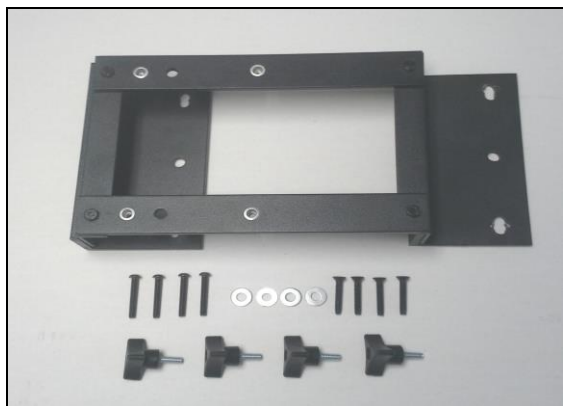


FIG. 1

CONTENTS: SEE FIG. 1

- 1-** Quick Draw Polaris Plate (QD800PMP2)
- 4-** 1/4" Knob Screws
- 4 –** 1/4" Flat Washers
- 4 –** 1/4-20 x 1 ½" Floor Screws
- 4 –** M6-1.00 x 40mm Cap Screws

STEP 1- Remove appropriate torx screws from Ranger floorboard. **SEE FIG. 2**
****NOTE**** FOR 400 & 500 MODELS 4 FLOORBOARD BOLTS WILL BE REMOVED. FOR 800 MIDSIZE MODELS, ONLY 2 FLOORBOARD BOLTS WILL BE REMOVED & YOU WILL ONLY USE 2 OF THE 1/4 - 20 x 1 1/2" Floor Board Screws Provided.** **SEE FIG. 2A**



FIG. 2



FIG. 2A

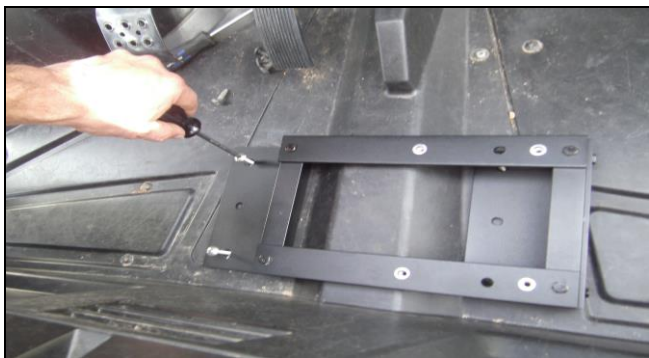


FIG. 3

STEP 2- Place the QD800PMP2 plate on the Polaris floorboard and align with the holes of the removed torx screws. **SEE FIG. 3**

STEP 3- Attach the QD800PMP2 plate to the Polaris floorboard using the ¼-20 x ½" floorboard screws OR M6-1.00x40mm screws & flat washers provided. Tighten securely. **SEE FIG. 4**

SEE FIG. 4

****NOTE**** Use access holes thru the top of the QD800PMP2 plate to reach the floorboard screws on the passenger side of the UTV.**

****NOTE**2015 & LATER MODELS WILL USE M6 X 40MM SCREWS.**

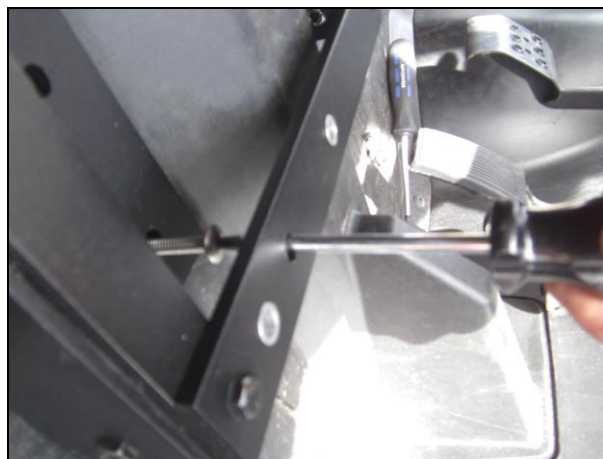


FIG. 4

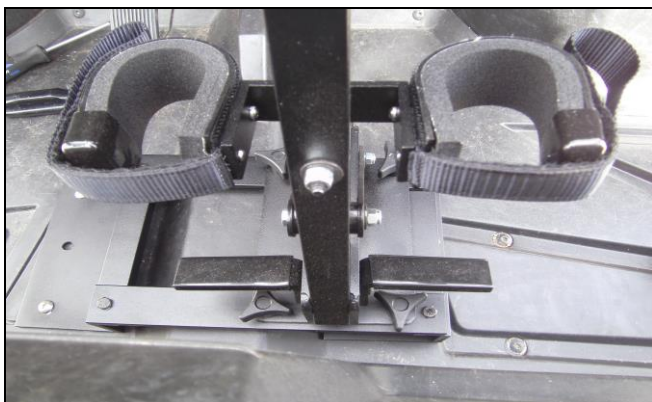


FIG. 5

STEP 4- Position QD800 assembly back over holes and replace screws. Tighten completely. **SEE FIG. 5**

⚠ WARNING : PLEASE READ AND FOLLOW ALL INSTRUCTIONS AND WARNINGS FURNISHED WITH QD 800 QUICK DRAW GUN RACK.

For more information about this or other products, contact us at:

Great Day, Inc.

604 Kimbrough Dr. * Tallulah, LA 71282 * (866) 649-1918 * www.greatdayinc.com