



“QUICK DRAW” POLARIS MOUNTING PLATE

MODEL: QD800PMP

⚠ WARNING

READ ALL INSTRUCTIONS BEFORE INSTALLING POLARIS PLATE.

NOTE: Failure to read instructions before use could result in injury or death.

Instructions for Installation and Use:

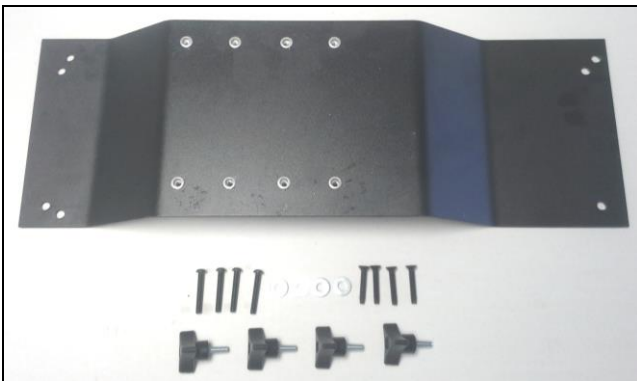


Fig. 1

CONTENTS: SEE FIG. 1

- 1-** Quick Draw Polaris Plate (QD800PMP)
- 4-** 1/4" Knob Screws
- 4-** 1/4" Flat Washers
- 4-** 1/4-20 x 1 1/2" Floor Screws
- 4-** M6-1.00 x 40mm Cap Screws

With the Quick Draw Gun Rack facing towards you, attach gun rack to plate using 4- 1/4" knob screws. (See Figs. 2 & 3.) Tighten thoroughly.

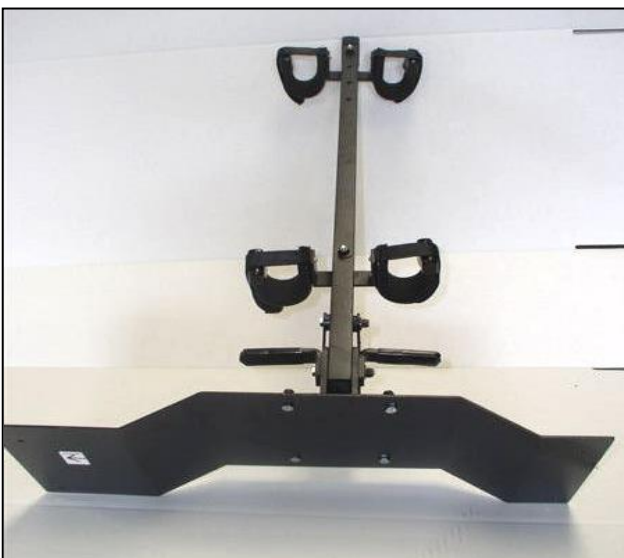


Fig. 2

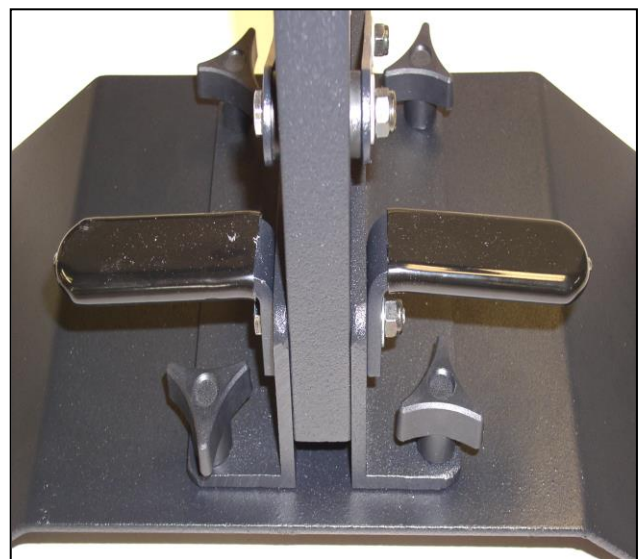


Fig. 3

Position Gun Rack / Plate assembly onto floorboard of Ranger to locate the 4 floorboard screws that will need to be removed for installation. **(See Fig. 4).** Using the torx wrench provided in the Ranger tool kit, Remove the 4 screws from floorboard. **(See Fig. 5)**



Fig. 4



Fig. 5

****NOTE**TO MINIMIZE POTENTIAL INSTALLATION PROBLEMS, PLEASE FOLLOW THESE STEPS EXPLICITLY.** Position assembly back over holes and replace 2 original screws on driver's side. Turn screws to engage threads but do not tighten. **There will be a gap between plate & floorboard.** (See Fig. 6) While pressing down on passenger side of plate, start remaining 2 original screws. Once all 4 screws are engaged, tighten completely. **(See Fig. 6A & 6B)**
****NOTE**IF LONGER SCREWS ARE NEEDED, REPLACE ORIGINAL SCREWS WITH 4- 1/4- 20 x 1 1/2" FLOOR SCREWS**



Fig. 6

GAP



Fig. 6A

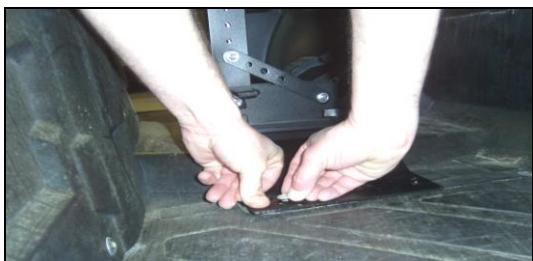


Fig. 6B

⚠ WARNING : PLEASE READ AND FOLLOW ALL INSTRUCTIONS AND WARNINGS FURNISHED WITH QD800 QUICK DRAW GUN RACK.

For more information about this or other products, contact us at:

Great Day, Inc.

604 Kimbrough Dr. * Tallulah, LA 71282 * (866) 649-1918 * www.greatdayinc.com