

INSTALLATION INSTRUCTIONS

EQUIPMENT REQUIRED:

WIRING ACCESS LOCATION: PC3, PC4

DRILL BITS: 1/2

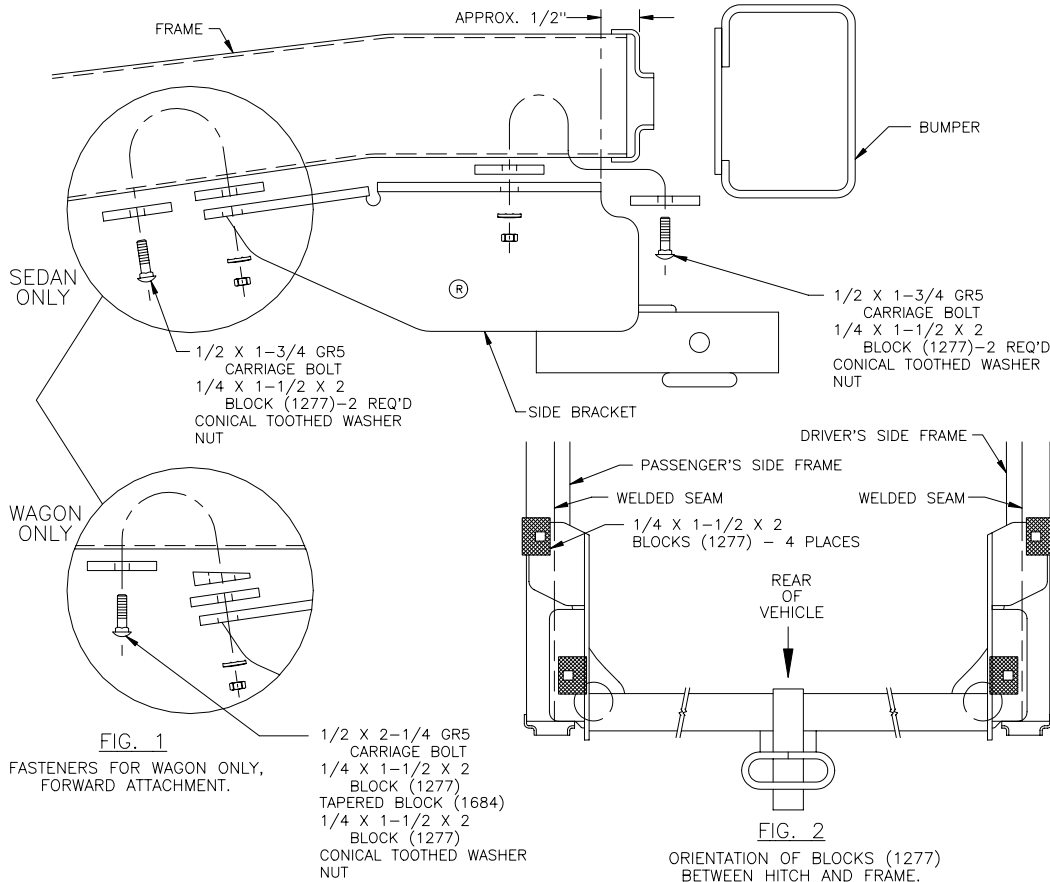
HITCH REQUIRES 1/2" PIN AND CLIP

WRENCHES: (TIGHTEN ALL FASTENERS WITH TORQUE WRENCH) 3/4

VEHICLE
 FORD LTD & CROWN VICTORIA
 FORD LTD, COUNTRY SQUIRE & CROWN VICTORIA WAGONS
 LINCOLN TOWN CAR**, TOWN COUPE & MARK IV
 MERCURY MARQUIS & GRAND MARQUIS
 MERCURY MARQUIS, GRAND MARQUIS & COLONY PARK WAGONS
 MERCURY MARAUDER

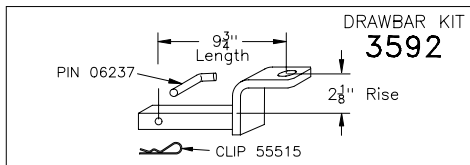
** HITCH WILL NOT FIT 2003 & LATER LINCOLN TOWN CAR MODELS

2000 LB MAX GROSS TRAILER WT
 200 LB MAX TONGUE WEIGHT
 DO NOT EXCEED TOWING VEHICLE RATINGS



NOTE: 1995-1997 LINCOLN TOWN CAR EXTERNAL DRESS PANEL BENEATH VEHICLE MUST BE REMOVED FOR HITCH INSTALLATION AND RETURNED TO VEHICLE OWNER.

- POSITION HITCH ON VEHICLE AS SHOWN ABOVE MAKING SURE HITCH IS CENTERED. THE SIDE BRACKETS SHOULD BE POSITIONED APPROXIMATELY 1/2" FORWARD FROM THE END OF THE FRAME.
NOTE - ANY WELD SPATTER ON THE BOTTOM OF THE FRAME MUST BE REMOVED TO ALLOW HITCH TO SIT FLAT.
WAGON ONLY: THE REARWARD SLOT IN THE HITCH SHOULD BE POSITIONED OVER THE EXISTING SLOT NEAR THE END OF THE FRAME, EACH SIDE.
- USING THE HITCH AS A TEMPLATE, DRILL A 1/2" HOLE THROUGH THE FORWARD SLOT IN THE SIDE BRACKET UP INTO FRAME, EACH SIDE.
SEDAN ONLY: USING THE HITCH AS A TEMPLATE, DRILL A 1/2" HOLE THROUGH THE REARWARD SLOT IN THE SIDE BRACKET (AS CLOSE TO CENTER OF VEHICLE AS POSSIBLE) UP INTO FRAME, EACH SIDE.
- INSTALL 1/4 X 1-1/2 X 2 BLOCKS (1277) BETWEEN THE HITCH AND FRAME AT EACH ATTACHMENT AS SHOWN IN FIG. 2.
WAGON ONLY: INSTALL TAPERED BLOCKS (1684) BETWEEN HITCH AND 1/4 X 1-1/2 X 2 BLOCKS (1277) AT FORWARD ATTACHMENTS AS SHOWN IN FIG. 1.
- USING ACCESS HOLE IN BOTTOM OF FRAME (APPROX. 16" FORWARD OF SIDE BRACKET), FISHWIRE 1/2 X 1-3/4 GR5 CARRIAGE BOLT (WAGON ONLY: USE 1/2 X 2-1/4 GR5 CARRIAGE BOLT) AND 1/4 X 1-1/2 X 2 BLOCK (1277) THROUGH FORWARD HITCH ATTACHMENT, EACH SIDE. FASTEN WITH CONICAL TOOTHED WASHERS AND NUTS.
- USING LARGE ACCESS HOLE NEAR END OF FRAME, INSTALL 1/2 X 1-3/4 GR5 AND 1/4 X 1-1/2 X 2 BLOCK (1277) THROUGH REARWARD HITCH ATTACHMENT, EACH SIDE. FASTEN WITH CONICAL TOOTHED WASHERS AND NUTS.
 TIGHTEN ALL 1/2 GR5 FASTENERS TO 75 LB.-FT.



USE ONLY THE DRAWBAR SHOWN FOR CORRECT BUMPER CLEARANCE AND HEIGHT.
 DRAWBAR MUST BE USED IN THE RISE POSITION ONLY.

THIS PRODUCT COMPLIES WITH SAFETY SPECIFICATIONS AND REQUIREMENTS FOR CONNECTING DEVICES AND TOWING SYSTEMS OF THE STATE OF NEW YORK, V.E.S.C. REGULATION V-5 AND SAE J684.

APPROX WEIGHT (LB.)	FASTENER KIT
29.1	01130-712

NOTE: Check hitch frequently, making sure all fasteners and ball are properly tightened. If hitch is removed, plug all holes in trunk pan or other body panels to prevent entry of water and exhaust fumes. A hitch or ball which has been damaged should be removed and replaced. Observe safety precautions when working beneath a vehicle and wear eye protection. Follow car maker's specs for maximum trailer weight and tongue weight. Do not cut access or attachment holes with a torch.

TOWING PRODUCTS
 Plymouth, Michigan