

INSTALLATION INSTRUCTIONS

VEHICLE

FORD EXPLORER
MAZDA NAVAJO
MERCURY MOUNTAINEER

EQUIPMENT REQUIRED:

WIRING ACCESS LOCATION: SUV1, SUV2

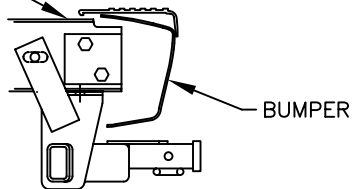
DRILL BITS: 1/2"

HITCH REQUIRES 1/2" PIN & CLIP

WRENCHES: (TIGHTEN ALL FASTENERS WITH TORQUE WRENCH) 13/16, 7/8, 15/16

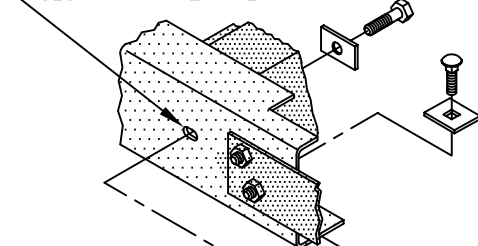
3500 LB MAX GROSS TRAILER WT
300 LB MAX TONGUE WEIGHT
DO NOT EXCEED TOWING VEHICLE RATINGS

FRAME RAIL

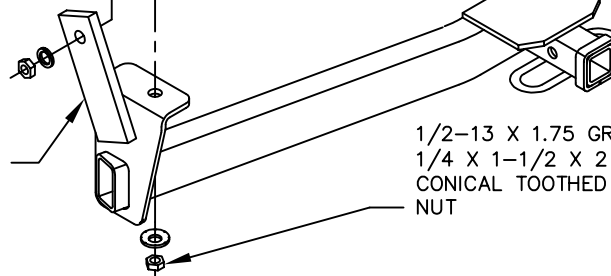


HITCH SHOWN IN PROPER POSITION

SLOT IN FRAME RAIL



UPRIGHT BAR



1/2-13 X 1.75 GR5 CARRIAGE BOLT
1/4 X 1-1/2 X 2 BLOCK
CONICAL TOOTHED WASHER
NUT

9/16-12 X 2 GR5
1/4 X 1-1/2 X 2 BLOCK
LOCK WASHER
NUT

HOLE DRILLED IN
FRAME EACH SIDE
IF NECESSARY

1. REMOVE TOW HOOKS, (IF EQUIPPED) FROM VEHICLE FRAME AND RETURN TO OWNER FOR REINSTALLATION IF HITCH IS REMOVED FROM VEHICLE.
2. LOOSEN SPARE TIRE.
3. RAISE HITCH INTO POSITION UNDER VEHICLE, PLACING UPRIGHT BARS AGAINST OUTBOARD VERTICAL SURFACE OF FRAME RAILS. ALIGN HOLE IN UPRIGHT BAR WITH EXISTING SLOT IN FRAME RAIL, BOTH SIDES.
4. LOOSELY INSTALL FASTENERS THROUGH SLOTS IN FRAME RAIL AND UPRIGHT BARS AS SHOWN ABOVE.

94 AND PRIOR MODELS:

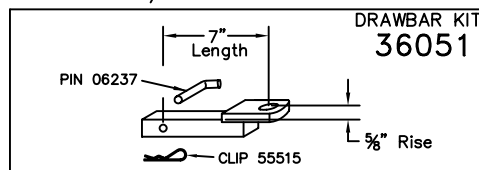
5. USE HITCH AS TEMPLATE AND DRILL 1/2" HOLE IN BOTTOM OF VEHICLE FRAME RAIL, AS SHOWN, BOTH SIDES. INSTALL REMAINING FASTENERS AS SHOWN.

95 AND LATER MODELS:

5. INSTALL REMAINING FASTENERS THRU FRAME RAIL AND HITCH BRACKET, AS SHOWN, BOTH SIDES.
NOTE: IT MAY BE NECESSARY TO ENLARGE EXISTING HOLES IN FRAME RAILS.

6. RETIGHTEN SPARE TIRE.

TIGHTEN ALL 1/2 GR5 FASTENERS TO 75 LB.-FT.
TIGHTEN ALL 9/16 GR5 FASTENERS TO 110 LB.-FT.



USE ONLY THE DRAWBAR SHOWN FOR CORRECT BUMPER CLEARANCE AND HEIGHT.

DRAWBAR MUST BE USED IN THE RISE POSITION ONLY.

THIS PRODUCT COMPLIES WITH SAFETY SPECIFICATIONS AND REQUIREMENTS FOR CONNECTING DEVICES AND TOWING SYSTEMS OF THE STATE OF NEW YORK, V.E.S.C. REGULATION V-5 AND SAE J684.

APPROX WEIGHT (LB.)

27

FASTENER KIT

01131-026

NOTE: Check hitch frequently, making sure all fasteners and ball are properly tightened. If hitch is removed, plug all holes in trunk pan or other body panels to prevent entry of water and exhaust fumes. A hitch or ball which has been damaged should be removed and replaced. Observe safety precautions when working beneath a vehicle and wear eye protection. Follow car maker's specs for maximum trailer weight and tongue weight. Do not cut access or attachment holes with a torch.

TOWING PRODUCTS
Plymouth, Michigan