



Optional Drawbar Kit 36061
(Sold Separately)
For 1998-2000 Model Years
Must be used in **Rise** position only

Installation Instructions

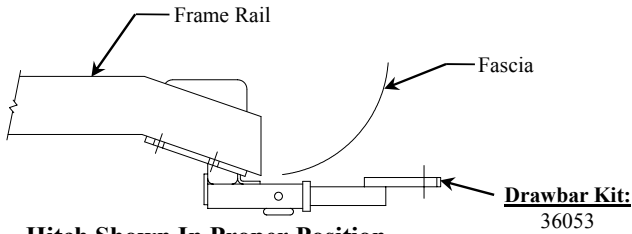
Toyota Sienna

Part Numbers:

36298

90638

06077



Hitch Shown In Proper Position

Drawbar must be used in the **Rise** position only.

**Do Not Exceed Lower of Towing Vehicle
Manufacturer's Rating or**

3500 LB (1589 Kg.) Max Gross Trailer Weight

300 LB (136 Kg.) Max Tongue Weight

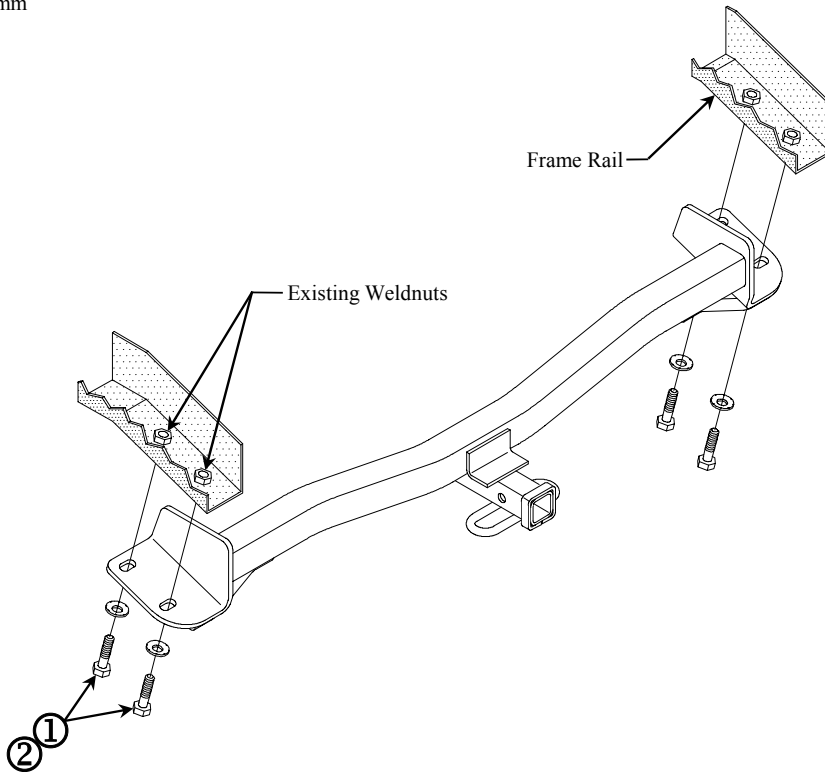
Wiring Access Location: SUV3, SUV4

Equipment Required:

Fastener Kit: F36298

Wrenches: 7/8", 16mm

Drill Bits: None



①	Qty. (4)	Hex Bolt – M10 x 1.25 x 30mm CL10.9	②	Qty. (4)	Conical Toothed Washer – 7/16"
---	----------	-------------------------------------	---	----------	--------------------------------

1. Remove tow hooks from frame rails.
2. Raise hitch into position and install fasteners as shown above.
3. Return all fasteners and tow hooks to vehicle owner.

Tighten all M10 x 1.25 CL10.9 fasteners with torque wrench to 53 Lb.-Ft. (72 N*M)

Note: check hitch frequently, making sure all fasteners and ball are properly tightened. If hitch is removed, plug all holes in trunk pan or other body panels to prevent entry of water and exhaust fumes. A hitch or ball which has been damaged should be removed and replaced. Observe safety precautions when working beneath a vehicle and wear eye protection. Do not cut access or attachment holes with a torch.

This product complies with safety specifications and requirements for connecting devices and towing systems of the state of New York, V.E.S.C. Regulation V-5 and SAE J684.