

INSTALLATION INSTRUCTIONS

VEHICLE

FORD THUNDERBIRD
MERCURY COUGAR
LINCOLN MARK VIII

EQUIPMENT REQUIRED:

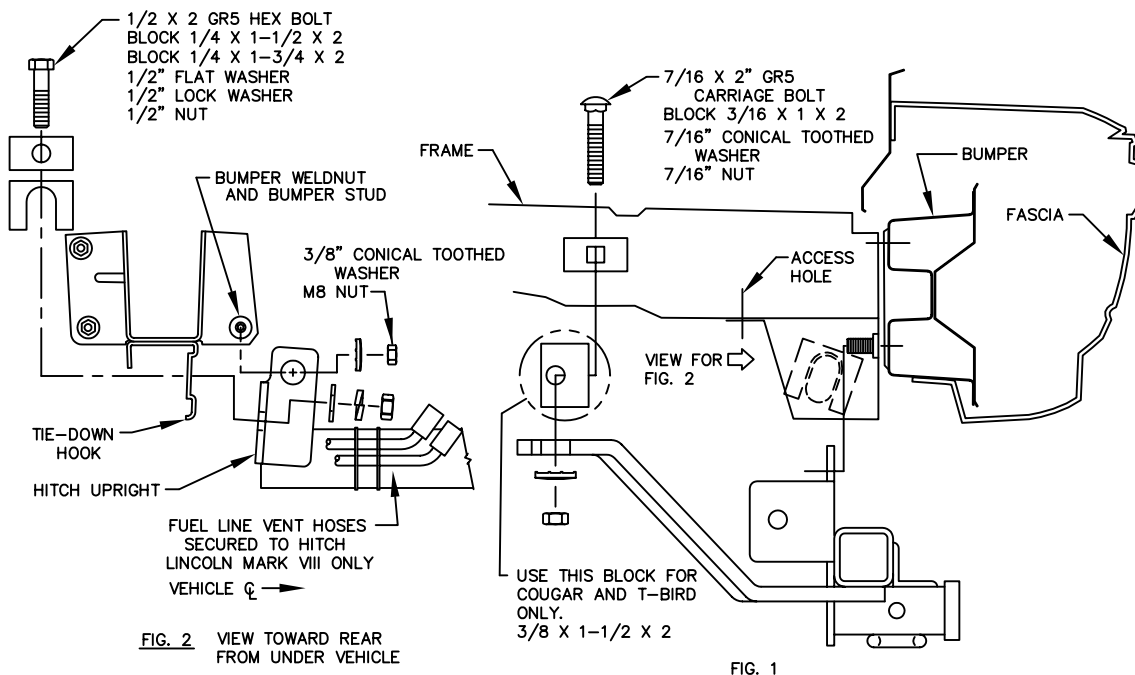
WIRING ACCESS LOCATION: PC3, PC4

DRILL BITS:

HITCH REQUIRES 1/2" PIN & CLIP

WRENCHES: (TIGHTEN ALL FASTENERS WITH TORQUE WRENCH) 13mm, 11/16, 3/4 7/8

3500 LB MAX GROSS TRAILER WT
300 LB MAX TONGUE WEIGHT
DO NOT EXCEED TOWING VEHICLE RATINGS



LINCOLN MARK VIII

LOWER EXHAUST BY REMOVING BOLT WHICH FASTENS EXHAUST HANGER TO VEHICLE FRAME, EACH SIDE. REMOVE J-NUT FROM INSIDE VEHICLE FRAME, EACH SIDE. RETURN BOLTS AND J-NUTS TO VEHICLE OWNER. DISCONNECT FUEL LINE VENT HOSE BRACKET FROM VEHICLE BUMPER.

ALL VEHICLES

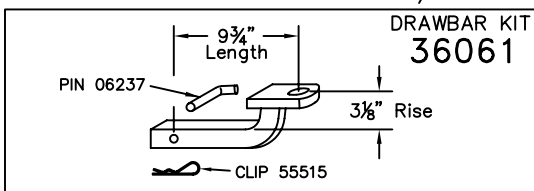
1. RAISE HITCH INTO POSITION, PLACING 3/4" HOLE IN HITCH UPRIGHT OVER ROUND WELDNUTS AND BUMPER STUD. INSTALL 3/8" CONICAL TOOTHED WASHER AND M8 HEX NUT ON STUD IN BUMPER, EACH SIDE.
2. INSTALL 1/2 X 2 HEX BOLTS, 1/4 X 1-1/2 X 2 BLOCKS AND C-SHAPED BLOCKS THROUGH SLOT IN TIE-DOWN BRACKET AND HITCH UPRIGHT, EACH SIDE. BE SURE LEGS OF C-SHAPED BLOCK SPAN SLOT AS SHOWN IN FIGURE 1. FASTEN WITH 1/2 FLAT WASHER, LOCK WASHER AND NUT.
3. USE ACCESS HOLES REARWARD OF EACH SIDE ARM ATTACHMENT TO FISHWIRE 3/16 X 1 X 2 BLOCK AND 7/16 X 2" LG. CARRIAGE BOLT INTO POSITION.

THUNDERBIRD AND COUGAR MODELS: 3/8 X 1-1/2 X 2 BLOCK MUST BE PLACED BETWEEN FRAME AND HITCH SIDE ARM, BOTH SIDES.

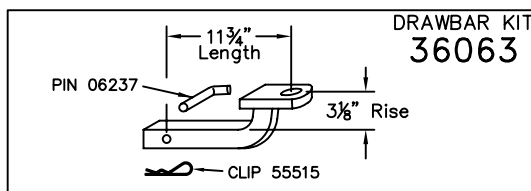
LINCOLN MARK VIII MODELS: EXHAUST HANGER BRACKETS MUST BE REINSTALLED BETWEEN SIDE ARM AND CONICAL TOOTHED WASHER, EACH SIDE. FASTEN WITH 7/16 CONICAL TOOTHED WASHER AND NUT.

4. SECURE FUEL LINE VENT HOSES TO HITCH WITH CABLE TIES PROVIDED, LINCOLN MARK VIII ONLY (SEE FIG. 2).
TIGHTEN M8 CL10 FASTENERS TO 25 LB.-FT.
TIGHTEN 7/16 GR5 FASTENERS TO 50 LB.-FT.
TIGHTEN 1/2 GR5 FASTENERS TO 75 LB.-FT.

MARK VIII & PRE-1996 T-BIRD/COUGAR



1996 & LATER T-BIRD/COUGAR ONLY



USE ONLY THE DRAWBAR SHOWN FOR CORRECT BUMPER CLEARANCE AND HEIGHT. DRAWBAR MUST BE USED IN THE RISE POSITION ONLY.

THIS PRODUCT COMPLIES WITH SAFETY SPECIFICATIONS AND REQUIREMENTS FOR CONNECTING DEVICES AND TOWING SYSTEMS OF THE STATE OF NEW YORK, V.E.S.C. REGULATION V-5 AND SAE J684.

APPROX WEIGHT (LB.)	FASTENER KIT
26.8	01130-856

NOTE: Check hitch frequently, making sure all fasteners and ball are properly tightened. If hitch is removed, plug all holes in trunk pan or other body panels to prevent entry of water and exhaust fumes. A hitch or ball which has been damaged should be removed and replaced. Observe safety precautions when working beneath a vehicle and wear eye protection. Follow car maker's specs for maximum trailer weight and tongue weight. Do not cut access or attachment holes with a torch.

TOWING PRODUCTS
Plymouth, Michigan