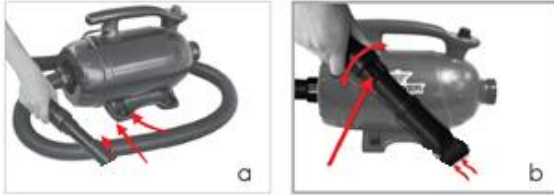


VACUUM FEATURE

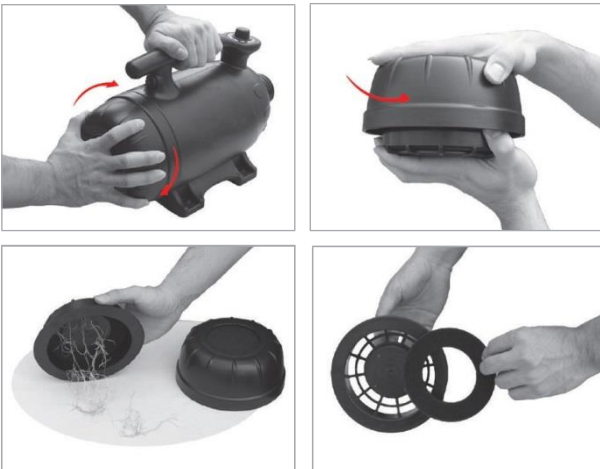
Your B-55 Pro At Home Dryer can also function as a vacuum to suck up loose fur before grooming and clean up messes afterwards.



1. To convert your B-55 to vacuum mode, first unplug the unit.
2. Remove the inlet filter and grill cover on the rear end.
3. Detach hose from the front connector and reattach to the rear of unit as pictured in figure A. Attach square nozzle.
4. Open the air bleed hole on the hose (fig. B) to protect motor.
5. Plug in unit and turn on switch to desired speed.

IMPORTANT!

Dust chamber and filters must be thoroughly cleaned before converting unit back to dryer. Remove rear cover and unscrew dust case to disassemble. *See Owner's Manual for full maintenance instructions.*



B-55

Do It Yourself Styling Guide



Toll Free: (855) 855-8868

Fax: (626) 285-3302

Email: info@xpower.ws

WWW.XPOWER.WS

SET UP: Prepare Bathing Station

Make sure to gather together all grooming tools before starting to bathe your furry friend.

Brush & Comb	Shampoo
Scissors	Conditioner
Nail Trimmer	Towels
Treats	XPOWER B-55

STEP 1 - Brushing & Combing

Fully brushing your pet before bathing is a must to loosen undercoat and remove mats/tangles.

- **Choosing a Brush Type:** A rubber brush is recommended for short/smooth coats. Long, thick coats will benefit from a slicker brush.
- **Combing:** Use a medium/fine comb to detect tangles & mats. Use a combination of the brush and comb to straighten mats until comb flows freely through coat. You may need to use scissors to split larger set in mats.
- **Thick Undercoats:** A coarse comb with 1.5" long tines may be used to remove undercoat after it has been loosened by the slicker brushing.



STEP 2 - Nail Grooming

Plier style pet nail trimmers are a good choice for beginners. Guillotine trimmers are great for pets less than 15 lbs.

- **Conservative Clipping:** The safest technique is to trim away small stages of the nail and check for the quick as you go. A Kwik Stop Styptic Powder is good to have on hand. You will usually trim more on front paws than rear because the rear nails are naturally worn down.

STEP 3 - Bath Time

Gather all your bathing products including towels so that they are within arm's reach. Thorough shampoo rinsing is important to prevent skin irritation.

- **Water:** Holding the shower/hose nozzle directly against the skin will help quickly penetrate coat.
- **Shampoo:** Squeeze shampoo into a shallow pan and use a sponge to apply. Use your hands to lather your pet completely, paying special attention to paws, tail, under body, and between legs. Tearless, detergent free soaps are preferred.
- **Rinse:** Using warm water start at the head and face then move down the spine; holding nozzle closely to the skin. Move back and forth, using your hands to feel for shampoo.
- **Conditioning:** Use your hands to squeeze off excess water and then massage conditioner into coat and onto skin. Rinse if instructed.

STEP 4 - Drying

Thorough drying promotes good skin health in addition to creating a chic styled finish. The B-2's Dual speed controls allow for maximum water removal on high speed and a lower speed for styling and timid pets.

Nozzle Guide



1 2 3

1. Cone Nozzle

2. Vented Comb Nozzle

3. Curry Nozzle

- **Towel Dry:** After letting your furry friend give a good shake, drape a towel over them and gently squeeze in a blotting motion (do not rub). Dab dry until water is no longer dripping.

- **Drying Short Coats:** Use the cone nozzle followed by the curry nozzle. Move the hose in long strokes directly against the skin in the direction of growth; working from the top rear of the dog downwards.

- **Drying Long Double Coats:** Start drying with either the cone nozzle for maximum water removal. To prevent tangles, hold the nozzle about 2" away, moving in short quick upward strokes.

- **Drying Curly Coats:** Conditioner sprays are very useful before using the B-55. Attach the cone nozzle and begin with a sweeping motion to separate hair. To complete drying, use short upward strokes.

- **Neck, Head & Ears:** The curry or vented comb nozzle is preferred to dry neck, head and ears. Never point dryer directly at your pet's ears or eyes. Using the low speed, direct airflow forward from back of the head towards the muzzle. Hold down ears when passing over them.

STEP 5 - Styling

Now that your furry friend is mostly dried it is time for the finishing touches. Use the vented comb nozzle on low speed from rear to front against lay of the coat to dry stubborn damp hair. Brush out and smooth your pet's coat using the curry nozzle for short coats or vented comb nozzle for longer coats on low speed. Finish with a comb for final styling.

STEP 6 - Reward

Congratulations! Your invested time has saved you from paying costly groomer fees. Treat yourself and your furry friend to a yummy snack or a walk in the park to show off your precious pet. You've both earned it!