



SOLAR CHIMES BIRD ANTLER BIRDHOUSE

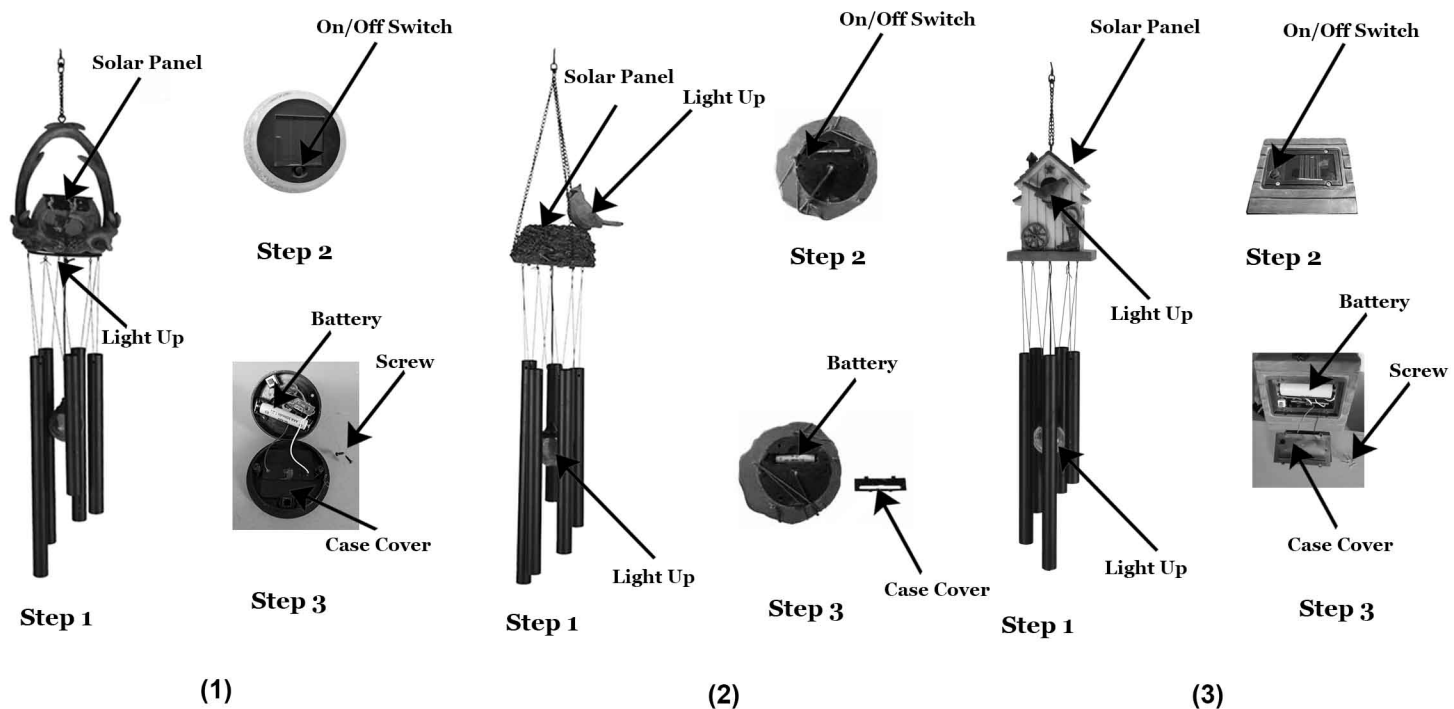
SOLAR LIGHT ASSEMBLY & USE INSTRUCTION

Please read instructions carefully before assembly. Retain for future reference.

SKU #1210900

Assembly & Use

1. Place the product on the area where the panel can get at least 8 hours direct sunlight each day. Shadowed location will not allow battery to be charged fully and reduce the lighting duration in the night.
2. The outdoor location to install the light should not near to night light sources such as street light, which may cause the solar light to be turned "OFF" automatically.
3. For first time use, the switch is in "OFF" position, push switch "ON".
4. It should be charged for at least 6 hours for first time before use.
5. After charged in sunlight, then the solar light will turn on automatically in the night.



Care and maintenance

1. To clean the panel regularly with cloth or wet cloth. In winter, dust snow away from the top of the panel.
2. If the solar light do not light up, check below:
 - a. Make sure the switch is in "ON" position.
 - b. The battery is not charged since the weather cloudy or sunlight can not shine directly to the panel 6-8 hours each day.
 - c. If that is all right and it has been used for 8-12 months, the battery maybe weak or worn out. It is time to replace the rechargeable battery now.
3. Replacement of battery: 1pc "AAA" 1.2V 300mAh, Ni-Mh rechargeable battery - same equivalent type as recommended must be used. Push switch to "OFF", remove the screws in the corner of panel with screwdriver (not include), replace old battery with new one, screw the panel back, turn switch "ON", charge battery fully. It is ready for use.

Caution

1. If the solar light animal is not in use, in shipment, storage and replace battery, the switch should be in "OFF" position.
2. The battery which is worn out should be recycled or disposed properly.

Distributed by:
TRACTOR SUPPLY COMPANY
5401 VIRGINIA WAY
BRENTWOOD, TN 37027
For customer support,
call: 1-888-376-9601
www.TractorSupply.com
MADE IN CHINA