



Custom Metal Products, LLC

5781 Westwood Dr. Weldon Spring, MO 63304

636-329-0142 www.CustomMetalProd.com

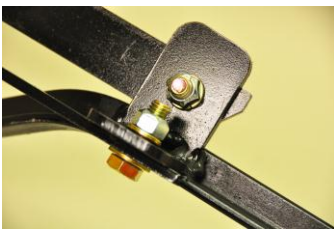
3 Gun Auto Reset Target/Stand/Stake Assembly Instructions



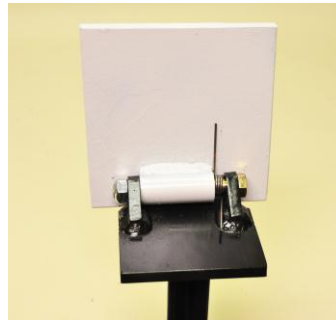
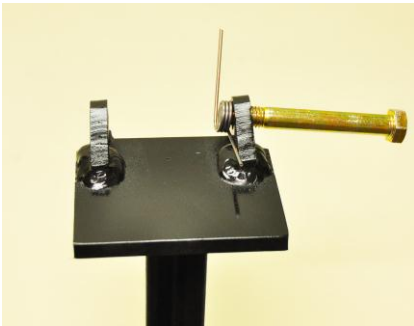
1) Lay the post on a table or the ground for assembly.



2) Install leg with radiused side toward the post, using the 1/2-13 hex head grade 8 bolt and hardened washer on the outside of the leg.



3) Install both folding legs with the split lock washer and locknut on the inside of the legs. Tighten so the legs move, and the lock washer provides enough friction to hold them in place.



4) The target assembly comes with two springs, the Competition spring which is weaker, and the Practice spring which is stronger. The Competition spring (Yellow) will just hold the target up against wind or vibration, but when the target is struck, it will stay down. The match officer must reset the target to the ready position for the next shot. The Practice spring (Silver) will auto-reset the target to the ready position each time after it has been struck, so you can keep shooting.

5) Install the 1/2-13 X 4 hex head grade 8 bolt into the right side block (as viewed above), and install spring. Then install target and the 1/2-13 locknut, tighten until nut just touches the left side block.



6) Stand target in desired location, adjusting the folding legs to accommodate uneven ground and to make post vertical. The legs may be locked in place by fully tightening the locknuts. The stand and target is now ready for use.



7) If you have purchased the Stake-In model rather than the Tripod model, assemble the target as stated above in steps 4 & 5. Use a heavy hammer and drive into ground to your desired height by striking the top plate only, not the target itself. Once driven into the ground, the target is ready for use.

Always wear approved safety glasses and ear protection when shooting or observing shooting at any target.

Target Use and Care

The targets produced by CMP are made from AR500 steel for long life and minimum damage due to bullet strikes. The stands, bases and mounting brackets are made from normal steel and can be damaged by repeated bullet strikes, and will not withstand rifle bullet strikes. The design of the targets protects some of the base with the AR500 target face, but occasional hits will occur. The hardware used to mount the targets is Grade 8 and will better withstand repeated bullet strikes. Never use a lower grade of bolt. Replacement hardware is available from CMP.

- Pistol shooting at our targets should be performed beyond a range of 15 yards.
- Rifle shooting at our targets should be performed beyond a range of 100 yards. Bullet velocity must be below 3000 feet per second at target impact.
- Never use armor piercing or steel core bullets to shoot any target
- Always place the target in front of a backstop to capture any bullets which miss the target.
- Always inspect the targets and support structure before and after use for damage and for proper and safe operation.
- Do not use any targets or support structure if any damage or improper operation is found.

Warranty

All CMP products are warranted for one year from date of purchase for defects in material or workmanship. We will repair or replace, at our option, any component found to be defective. Shipping of product back to the manufacturer is the responsibility of the customer. Contact CMP for return shipping instructions.

Limitations of warranty: This warranty does not cover normal wear items such as bolts, nuts, springs, etc. The target faces will become dented and pock marked due to repeated bullet strikes, this is normal wear and is not covered by the warranty. This warranty does not cover any item that has been modified or altered in any way, used outside its intended purpose, or damaged by acts of nature.