

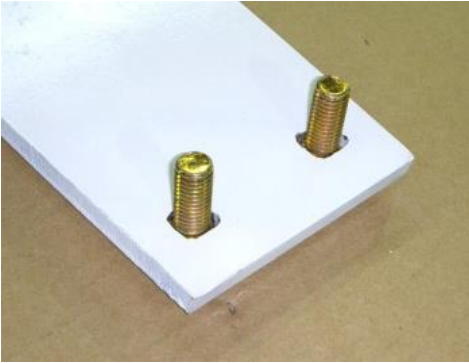


Custom Metal Products, LLC

5781 Westwood Dr. Weldon Spring, MO 63304

636-329-0142 www.CustomMetalProd.com

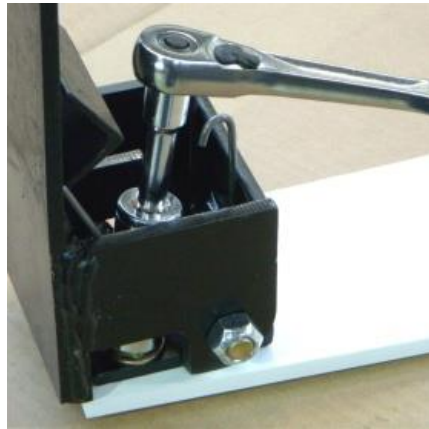
Auto Reset Assembly Instructions



1) Lay target face down on a table, insert the Grade 8 carriage bolts with the round head on the face that is exposed to bullet strikes. The two grade 8 carriage bolts, washers and locknuts are shipped with the Auto Reset Base. Do not use any lower grade bolt, as they will be damaged by bullet strikes.

2) Set Auto rest Base down onto the bolts, and install hardened flat washers and locknuts.

3) Tighten the locknuts securely with a socket wrench or an open end wrench.



4) Insert the stabilizer legs in the front and rear pockets of the base. After reading the Target Care and Use instructions on the reverse side, the target is now ready for use.



Always wear approved safety glasses and hearing protection when shooting or observing shooting at any target.

Target Use and Care

The targets produced by CMP are made from AR500 steel for long life and minimum damage due to bullet strikes. The stands, bases and mounting brackets are made from normal steel and can be damaged by repeated bullet strikes, and will not withstand rifle bullet strikes. The design of the targets protects much of the base with the AR500 target face, but occasional hits will occur. The hardware used to mount the targets is Grade 8 and will better withstand repeated bullet strikes. Never use a lower grade of bolt. Replacement hardware is available from CMP.

- Pistol shooting at our targets should be performed beyond a range of 15 yards.
- 22 rimfire pistol or rifle shooting should be performed beyond a range of 15 yards.
- Rifle (below 3000 feet per second at impact) shooting at our targets should be performed beyond a range of 100 yards.
- Never use armor piercing or steel core bullets to shoot any target
- Always place the target in front of a backstop to capture any bullets which miss the target.
- Always inspect the targets and support structure before and after use for damage and for proper and safe operation.
- Do not use any targets or support structure if any damage or improper operation is found.
- When the first face gets pockmarked or damaged, turn target over and use other face.

Warranty

All CMP products are warranted for one year from date of purchase for defects in material or workmanship. We will repair or replace, at our option, any component found to be defective. Shipping of product back to the manufacturer is the responsibility of the customer. Contact CMP for return shipping instructions.

Limitations of warranty: This warranty does not cover normal wear items such as bolts, nuts, springs, etc. The target faces will become dented and pock marked due to repeated bullet strikes, this is normal wear and is not covered by the warranty. This warranty does not cover any item that has been modified or altered in any way, used outside its intended purpose, or damaged by acts of nature.

6/25/2014