

Instructions and Care

Fitting the harness on your dog

1. Place upper neck straps (F) around pet's head
2. Wrap two lower straps (D) around pet's chest, behind front legs
3. Fasten Nesting Buckles (C) on both sides
4. Adjust all straps to fit comfortably

Warning!

Do not use chest plate D-ring (G) or leash hitch (B) for securing in a vehicle. Replace harness if it shows signs of wear or has been in a crash situation.

To use as a vehicle seatbelt harness:

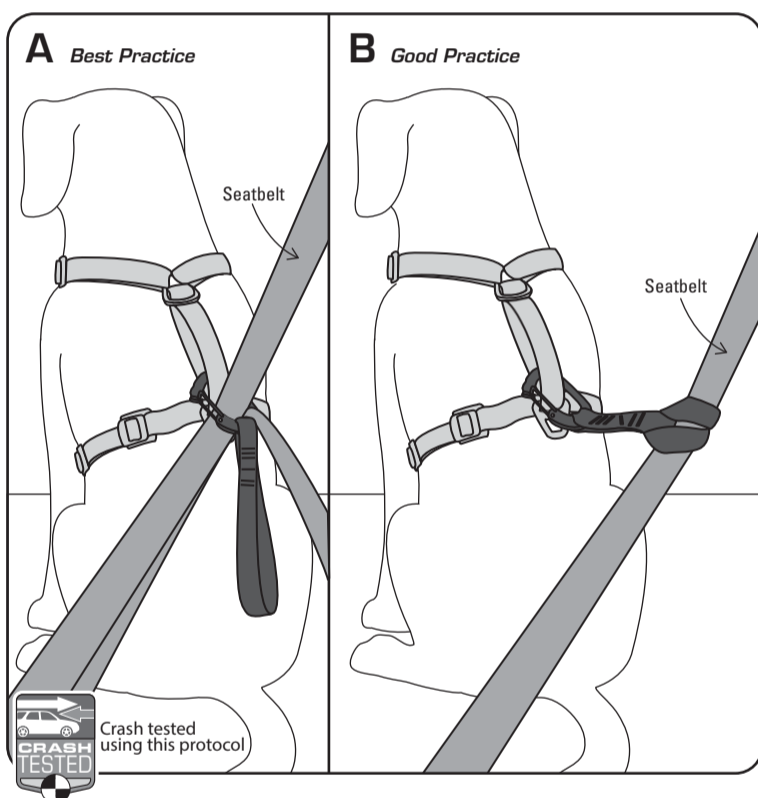
Securing your dog safely into the vehicle may be done in two ways.

A) Best Practice - to reduce excursion (pitching forward)

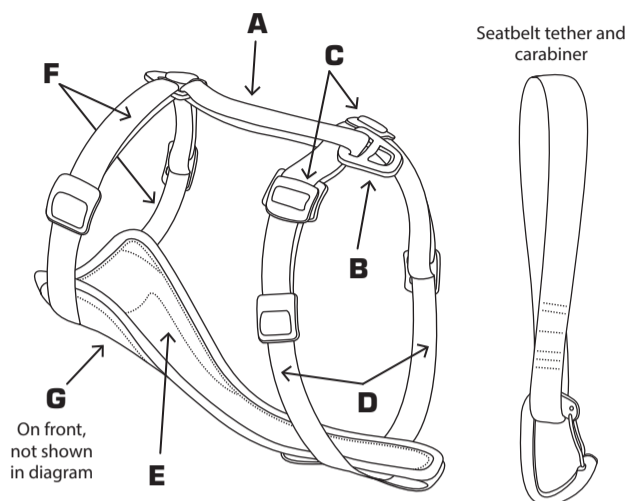
Attach the tether's carabiner through the top layer of the harness's back strap (A). Next, attach carabiner to buckled vehicle seatbelt, leaving tether loose.

B) Good Practice

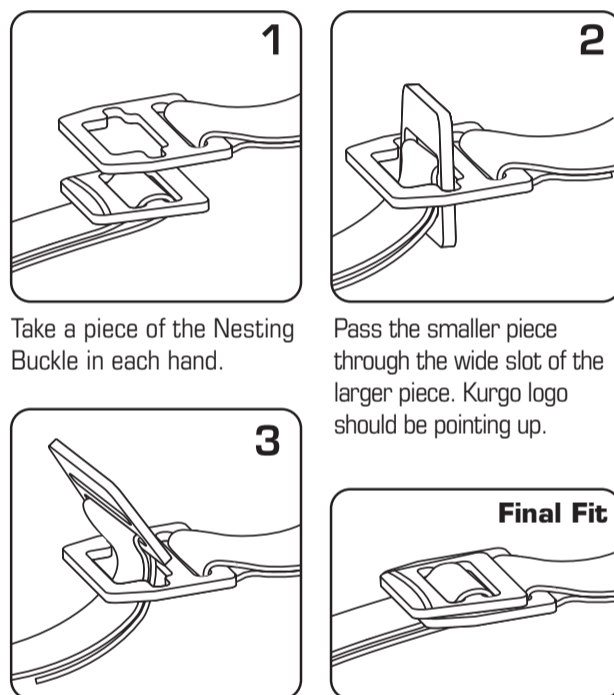
Loop the tether handle around the seatbelt, passing back through itself. Next, clip the carabiner through the top layer of the harness's back strap (A). This set up allows for more movement for your dog.



- A** Back Strap
 - B** Leash Hitch
 - C** Nesting Buckles™
 - D** Lower Chest Straps
 - E** Padded Chest Plate
 - F** Upper Neck Straps
 - G** Chest Plate D-ring
- FOR LEASH ONLY**



Fastening the Nesting Buckles:



Pull flat and snug the lower straps for a secure fit.

To use as a walking harness:

The Kurgo Tru-Fit Smart Harness™ is designed with the owner's and dog's walking needs in mind. The front chest plate provides a centrally located D-Ring for leash attachment, which helps deter your dog from pulling.

When your dog pulls, the force redirects them to one side or the other as you walk together. This sends them back in your direction and reduces pulling. The easy on-and-off design, and multiple adjustment points makes the Kurgo harness a great alternative to other training harnesses and collars.

For training purposes only, do not use with aggressive dogs.

Cleaning Instructions

Our product cleaning instructions will help ensure that your gear has a long, exciting life. Washing by hand and hang air-drying is the best way to care for your Kurgo products.

Hand Wash Instructions

1. Brush off loose dirt with a dry brush.
2. Spot clean with a damp sponge, cold water, and mild soap. Avoid harsh detergents.
3. If necessary, rinse larger area to eliminate excess soap residue.
4. Hang to air dry (do not machine dry).



This product has been



All products displaying this symbol have been crash tested for dogs up to 75lbs at an established university testing facility. They have been dynamically or sled tested using the Federal Motor Vehicle Safety (FMVSS) 213 standards used for child restraint systems. Results may vary for dogs weighing more than 75lbs.

Extra-small harness tested up to 10lbs

Small harness tested up to 25lbs

Medium harness tested up to 50lbs

Large harness tested up to 75lbs

Extra-large harness tested up to 75lbs

NOTICE: Please contact Kurgo directly with any product or warranty inquiries.