

Because you're not like everyone else.

**luma** ●●●™  
comfort



**COOL & WARM MIST HUMIDIFIER  
HCW10B  
OWNER'S MANUAL**

## BECAUSE YOU'RE NOT LIKE EVERYONE ELSE.

And neither are we. Always at the forefront of our industry, our goal is to offer the best quality product and consumer value on the market. Our team is constantly pushing the boundaries of innovation and design to create exceptional products to help you achieve a more comfortable living or work space.

Our goal is to ensure that every Luma Comfort customer is 100% satisfied with their product. If you have any questions or concerns regarding your product, or if you would simply like to share an idea with us, please feel free to contact us. Our friendly and knowledgeable customer support team is here for you. Call us today at **866-737-6390** or email **support@lumacomfort.com**.

For future reference, we recommend you attach a copy of your sales receipt here and record the following information. You will need this information if it becomes necessary to contact the manufacturer for service inquiries.

Date of Purchase: \_\_\_\_\_

Serial Number: \_\_\_\_\_

Model Number: \_\_\_\_\_



Connect with us online.

## ● ● ● CONTENTS

Important Safety Information .....	4
Get To Know Your Humidifier .....	5
Product Benefits .....	5
Parts Diagram.....	5
Set Up Instructions .....	6
Quick Start Instructions .....	7
Operating Instructions.....	8
Mist Settings .....	8
Setting the Hygrometer.....	9
Timer Function .....	10
Operating Tips.....	10
Maintenance .....	11
Cleaning the Water Tank .....	11
DMC Maintenance .....	12
Technical Support.....	13
Product Specifications .....	13
Troubleshooting .....	13
Warranty .....	14

## SAVE THESE INSTRUCTIONS

Please carefully read this manual before attempting to use this humidifier. For your own safety, comply with all safety instructions and warnings contained in this owner's manual to prevent personal injury or property damage.

## ● ● ● IMPORTANT SAFETY INFORMATION



These instructions are not meant to cover every possible condition and situation that may occur. Please read all instructions before using this humidifier. Failure to carefully read all instructions may result in possible electric shock or fire hazard, and will void the manufacturer's warranty.

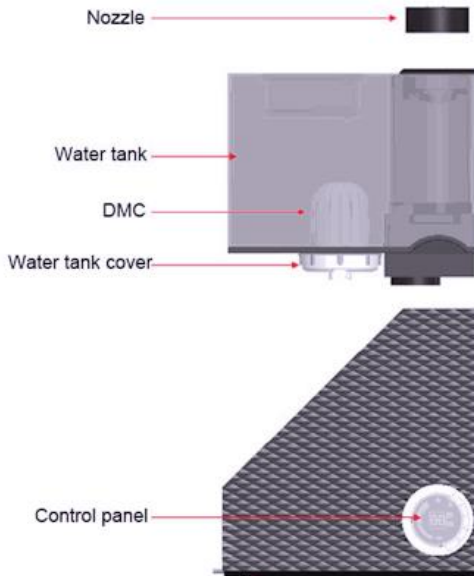
1. Use this humidifier only as instructed in this owner's manual. Other uses may cause electric shock, injury or fire.
2. Close supervision is required if this humidifier is used near children or pets.
3. To protect against electric shock, do not immerse this humidifier or its plug and cord in water.
4. If the humidifier is being transported or will not be in use, disconnect it from the power supply by tightly gripping the plug and pulling it from the power outlet. Do not disconnect the power supply by pulling on the humidifier's power cord.
5. Avoid contact with any of the humidifier's moving parts.
6. Place the humidifier on a level surface.
7. For best results, use purified water in the water tank. The ideal ambient temperature should be between 50 to 122 degrees Fahrenheit.
8. This humidifier's plug is intended to fit into a matching receptacle. Under no circumstances should the plug be altered in any way. An improper connection can result in electric shock.
9. If possible, avoid using extension cords with this humidifier. If an extension cord is absolutely necessary, do not use more than one extension cord to operate more than one unit.
10. Do not insert objects or allow fingers to enter into the humidifier's nozzles or air inlet, as this may cause electric shock or bodily injury. Do not block or tamper with the humidifier while it is in operation.
11. Do not run the power cord under mats or carpeting, and do not cover the power cord with runners. Arrange the power cord away from room traffic and where it can be tripped over.
12. Do not operate this humidifier in the presence of flammable substances or explosives.
13. Do not place the humidifier near an open flame or cooking/heating appliances.
14. This product is not intended for use in commercial or industrial areas.
15. If the humidifier will not be in use, empty the tank of any remaining water.
16. If the humidifier's plug or power cord is damaged, do not attempt to repair the components yourself. Please contact Luma Comfort's customer service hotline at 1-866-737-6390 or have the unit examined by an authorized service provider.

## ● ● ● GET TO KNOW YOUR HUMIDIFIER

### PRODUCT BENEFITS

- Provides soothing moisture for personal comfort
- Built-in hygrometer offers custom humidity control from 30% to 70% with both cool and warm mist settings
- Easy to read LED display with programmable 12-hour timer
- Modern design fits in with any decor
- Demineralization cartridge prevents scale buildup
- Energy-efficient and uses ultrasonic technology
- Adds moisture to dry environments and naturally eliminates airborne dust particles
- Near-silent operation – perfect for bedrooms, nurseries and other living spaces

### PARTS DIAGRAM

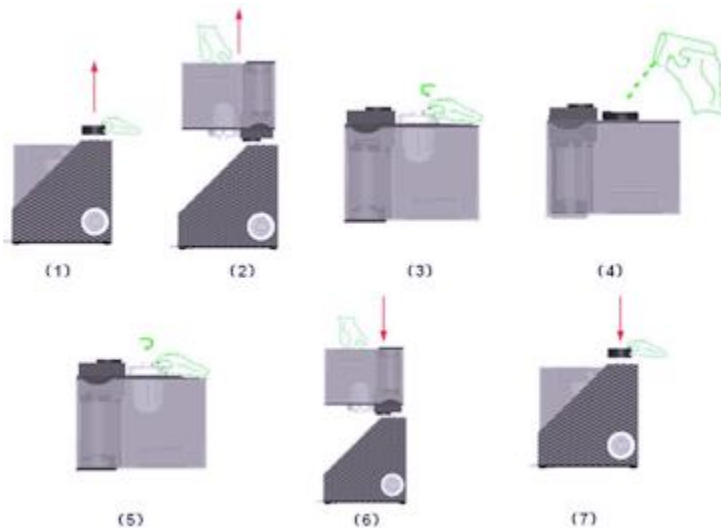


Say Goodbye to Ugly Products

## ● ● ● SET UP INSTRUCTIONS

Carefully remove all packaging materials and retain for future storage/use. Make sure there is no residual foam left in any of the components. No tools will be required to assemble this humidifier.

1. Unscrew the nozzle as indicated in figure 1 and remove the water tank from the base as indicated in figure 2.
2. Remove the water tank cover as indicated in figure 3 and pour water into the water tank as indicated in figure 4.
3. Place the water tank cover back onto the tank as indicated in figure 5 and place the entire water tank back into the unit's base as indicated in figure 6. You should hear the water flowing through the tank. If you do not hear water flowing through the tank, remove the water tank and replace it back onto the base.
4. Screw the nozzle back onto the unit.

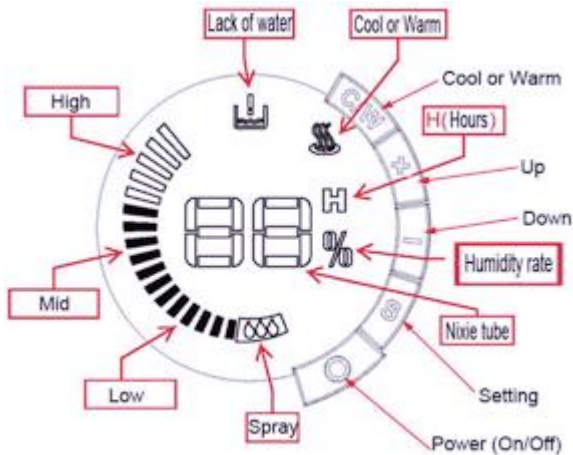


## QUICK START INSTRUCTIONS

1. After filling the water tank with water, replace the tank back onto the base, screw in the nozzle and plug the unit into a power supply. The unit will now be on standby mode. Turn the unit on or off by pressing the power button on the control panel.
2. Once the humidifier is turned on, you can also control the mist volume by pressing the "+" or "-" buttons on the control panel.
3. If the LED indicator turns red, this means not enough water has flowed through the unit yet. Wait a few seconds for the water to completely flow through the tank. At this point, the indicator light on the control panel will turn from red to blue, which indicates that it should be working properly.
4. If there is not enough water in the tank, the empty water tank LED indicator light will also turn red. Turn off the humidifier, unplug it from the power supply and add more water to the tank by following the steps listed above.
5. The humidifier has a memory function. If the unit is turned off without unplugging the power supply, once it is turned on again using the power button, it will revert back to the last mist setting. All of the settings will reset to the default settings if the unit is unplugged from the power supply.

## ● ● ● OPERATING INSTRUCTIONS

1. Plug the humidifier into the power supply. The unit will now be in standby mode. All other keys will be invalid except for the power button.
2. Press the power button. The humidifier will detect the water level in the tank. After 2 seconds, if there is sufficient water in the tank, it will begin to operate and the indicator light will turn on.
3. The default settings for the humidifier are as follows: medium mist setting, the timer function will be off, the fan will be on, the unit will be in cool mist mode and the humidity level will be set to 70%.



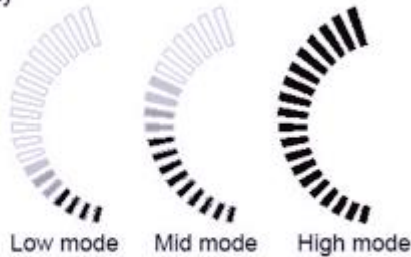
## MIST SETTINGS

1. To change the mist mode from cool mist to warm mist, press the C/W button on the control panel. Once the unit is set to warm mist, the C/W indicator light will turn from blue (cool mist) to red (warm mist). The humidifier will then heat the water in the tank. This process can take up to 5 minutes.
2. The mist settings and the timer settings are both controlled by the "+" and "-" buttons. To switch from the humidity settings to the timer settings, press the "S" button to adjust the corresponding settings.
3. Without pressing the "S" button, pressing the "+" and "-" buttons only will control the misting output. There are three misting output settings – high,



mid (medium) and low. After pressing the "+" or "-" buttons, your desired misting output will be shown on the control panel as indicated in the diagram below.

Humidity mode display



4. On the high mist volume setting, the unit's output is 300 ml/h. On the mid mist volume setting, the unit's output is 210 ml/h. On the low mist volume setting, the unit's output is 120 ml/h.

## SETTING THE HYGROMETER

1. To set the hygrometer, press the "S" button so that the numbers in the center of the control panel with the "%" sign light up. Press the "+" and "-" buttons to set your desired humidity level and wait 5 seconds before adjusting any other settings. The hygrometer can be set from 30% to 70% relative humidity.
2. Once your room is at your desired humidity level, the unit will stop adding mist to the air and the fan and atomizer will turn off. It will restart once the relative humidity decreases by 5%.
3. If the room's humidity level is at 70%, you will see this image:



This means "Continue." If this is displayed on the control panel, it means the humidity in your room is at the maximum level. Use the "+" and "-" keys to adjust the humidity level. Otherwise the atomizer and fan will stop working until the relative humidity drops by 5%, as indicated above.

## TIMER FUNCTION

1. Press the "S" button twice so that the "H" indicator light turns on in the control panel. This sets the timer function. Use the "+" and "-" keys to set the timer's duration. The timer can be set from 1 to 12 hours. After your time has been set, wait for 5 seconds and do not press any other key.
2. The display will revert back to the humidity level but will alternate between showing the humidity level and the set time.

## OPERATING TIPS

- Run the unit on the lowest setting to extend running time.
- Set the humidistat at your desired humidity level. This will turn the unit on and off as needed and extend the running time.
- When filling the tank, fill it up completely and then place it on the base. Let the water empty into the base until it stops bubbling, then refill the tank again. This ensures maximum water capacity and will also extend run time. The Luma Comfort HCW10B will run up to 40 hours without interruption, depending on room conditions.
- This humidifier operates with a demineralization cartridge that makes it capable of operating with any kind of water. However, using distilled water in your humidifier will keep it running in optimum condition for a longer period of time. It will also make easier to clean your humidifier, and eliminate white dust.
- Only operate your humidifier in areas where the relative humidity is lower than 50 percent. Higher humidity levels will encourage the growth of bacteria and other biological organism.

## ● ● ● MAINTENANCE

Regular cleaning and maintenance is an essential step in maintaining the longevity of your humidifier and ensuring that it operates free of defects. Maintain your humidifier by following these steps:

- Always unplug the humidifier from the power supply before servicing or cleaning.
- Regularly wipe all surfaces dry to prevent the accumulation of microorganisms in and around the humidifier.
- Empty the water tank and the internal reservoir once every three days.
- Clean the humidifier's water tank and base every two weeks.
- If the humidifier will not be in use for an extended period of time, clean it thoroughly, place the unit back in its original carton, and keep it stored in a clean, dry place.

### CLEANING THE WATER TANK

1. Ensure the unit is unplugged.
2. Empty the water tank completely and rinse with clean water.
3. Wipe all surfaces of the water tank dry using a clean, soft cloth. A disinfectant wipe can be used if available.
4. To disinfect the tank and remove hard water buildup, fill it with a solution of water and 3% hydrogen peroxide (recommended by the EPA). Allow it to sit for 15-20 minutes, swirling the water occasionally, to remove mineral buildup. Rinse thoroughly with clean water.
5. Clean the humidifier's base by wiping it thoroughly. Use the included brush to scrub away residue on the ultrasonic atomizer, the silver circle inside the base.
6. To remove mineral buildup from the base of the unit, pour a mixture of plain vinegar and water into the reservoir in the base. Allow it to soak for up to 20 minutes, then rinse thoroughly.
7. Wipe the interior surfaces with a soft cloth and allow it to dry completely before reassembling.

8. Use a soft cloth and a mild soap and warm water solution to clean the unit's exterior. Do not use harsh cleaners, gasoline, paint thinner, benzene, etc., as these substances can damage the humidifier.
9. Thoroughly dry all of the humidifier's parts with a soft cloth before reconnecting the unit to the power supply.

## DMC MAINTENANCE

The Luma Comfort demineralization cartridge (DMC) is designed to work for upwards of one year before needing a replacement. The actual lifespan will depend upon the quality of the water you use in your humidifier. In areas with extremely hard water, the cartridge may need additional maintenance or quicker replacement.

To extend the lifespan of your humidifier's DMC, soak the cartridge once a month in a solution of water and vinegar for 15-20 minutes.

## ● ● ● TECHNICAL SUPPORT

Luma Comfort is committed to providing a premier service experience. If you are experiencing any technical issues with your product related to either setup or operation, please contact our product support team at 1-866-737-6390 or support@lumacomfort.com.

### PRODUCT SPECIFICATIONS

<b>Model:</b>	<b>HCW10B</b>
<b>Product Dimensions:</b>	9.8" x 5.6" x 9.9"
<b>Product Weight:</b>	5.1 pounds
<b>Voltage:</b>	120V
<b>Wattage:</b>	105W
<b>Mist Type:</b>	Cool and warm mist
<b>Tank Size:</b>	7.3 pints
<b>Mist Settings:</b>	3
<b>Noise Level (dB):</b>	40dB
<b>Warranty:</b>	1 year manufacturer's warranty

### TROUBLESHOOTING

<b>Problem</b>	<b>Possible Cause(s)</b>	<b>Possible Solution</b>
<b>Low water alarm/indicator is on, but there's still water in the tank.</b>	The air intake vent is blocked.	Place the humidifier on a hard, flat surface, and make sure the vent on the bottom of the unit is clear of obstruction.
<b>An odor is coming from the humidifier.</b>	There is a buildup of minerals or bacteria inside the unit, or there is leftover residue from the manufacturing process.	Clean the unit according to the instructions above.
<b>There is a pink/orange buildup in the water tank.</b>	There is build up of common airborne bacteria inside the tank.	Clean the tank with a disinfectant. Clean the water tank regularly and change water on a daily basis to avoid future buildup.

## ● ● ● WARRANTY

Luma Comfort products are warranted to be free from defects in workmanship or materials for one (1) year from the date of purchase. If the product is found to be defective within this period, Luma Comfort, at its sole option, will repair or replace any components that fail during normal operation. The repairs or replacement will be made at no charge to the customer for parts and labor, assuming that the customer shall be responsible for all transportation costs to and from Luma Comfort. Luma Comfort retains the right to repair or replace (with a new or newly-refurbished replacement product) the appliance at its sole discretion. This warranty does NOT apply to the following:

- Products without a proof of purchase
- Products purchased from a source other than an authorized Luma Comfort dealer
- Cosmetic damage such as scratches or dents
- Damage caused by service performed by anyone who is not an authorized service provider of Luma Comfort
- Damage in transit
- Damage caused by accident, abuse, misuse, water, flood, fire, improper installation, maintenance negligence, commercial use for a non-commercial unit, acts of God or any other acts of nature or external causes
- Damage to a product caused by modifications or alterations without the written permission of Luma Comfort
- Normal wear and tear of parts that are designed to be replaced, such as filters or batteries
- Power failure and improper power supply such as low voltage, defective wiring or inadequate fuses
- Use of force or damage caused by external influences
- Complete or partially dismantled appliances

THE WARRANTIES AND REMEDIES CONTAINED HEREIN ARE EXCLUSIVE AND IN LIEU OF ALL OTHER WARRANTIES EXPRESS, IMPLIED, OR STATUTORY, INCLUDING ANY LIABILITY ARISING UNDER ANY WARRANTY OF MERCHANTABILITY OR FITNESS FOR A PARTICULAR PURPOSE, STATUTORY OR OTHERWISE. THIS WARRANTY GIVES YOU SPECIFIC LEGAL RIGHTS, WHICH MAY VARY FROM STATE TO STATE.

IN NO EVENT SHALL LUMA COMFORT BE LIABLE FOR ANY INCIDENTAL, SPECIAL, INDIRECT, OR CONSEQUENTIAL DAMAGES, WHETHER RESULTING FROM THE USE, MISUSE, OR INABILITY TO USE THIS PRODUCT OR FROM DEFECTS IN THE PRODUCT. SOME STATES DO NOT ALLOW THE EXCLUSION OF INCIDENTAL OR CONSEQUENTIAL DAMAGES, SO THE ABOVE LIMITATIONS MAY NOT APPLY TO YOU.

If you believe your product is defective, contact Luma Comfort for warranty service at 1-866-737-6390 or support@lumacomfort.com. In your correspondence with Luma Comfort, please describe the problem and request a return material authorization (RMA) number. You will also need to provide the proof of purchase, return shipping address and a daytime phone number.

After a Luma Comfort representative confirms that your product is defective and is still under warranty, you will receive an RMA and return shipping instructions. Products sent to our headquarters without an RMA will be refused.