

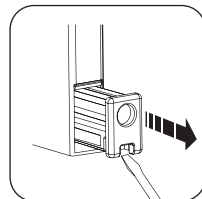
EXTRA TALL PREMIER PRESSURE GATE - MODEL XTPPG

EXTENSION IDENTIFIER & INSTALLATION

WHICH EXTENSIONS YOU WILL NEED:

(in conjunction with the basic gate)

Opening Size	Small	Medium	Large
32.5 to 35"	✓		
35 to 37.75"		✓	
37.75 to 40.5"	✓	✓	
40.5 to 43.25"			✓
43.25 to 46"	✓		✓
46 to 48.75"		✓	✓
48.275 to 51.5"	✓	✓	✓
51.5 to 54.25"			✓✓



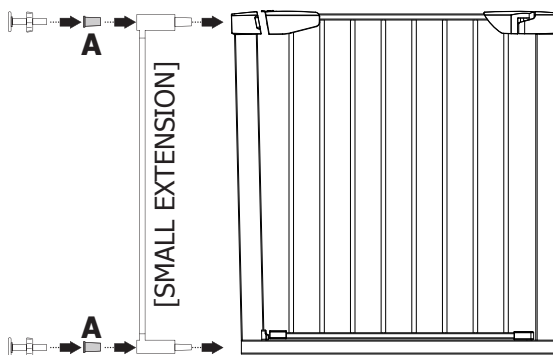
STEP ONE: Remove basic gate foot inserts at top and bottom of preferred extension side with flathead screwdriver. You will insert these below marked "A".

All inserts can be attached on either side of gate.

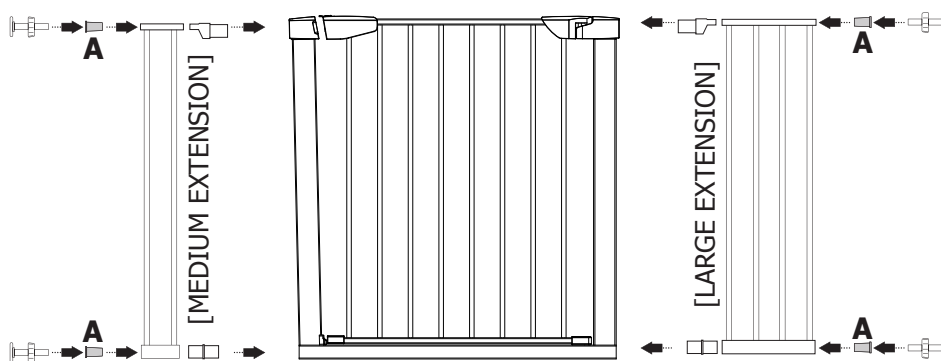
EXCEPTION:

In any combination with a small extension, small extension **MUST** attach to gate **FIRST**. (SEE BOTTOM DIAGRAM)

SMALL EXTENSION



MEDIUM or LARGE EXTENSIONS



SMALL + MEDIUM + LARGE EXTENSION COMBO

