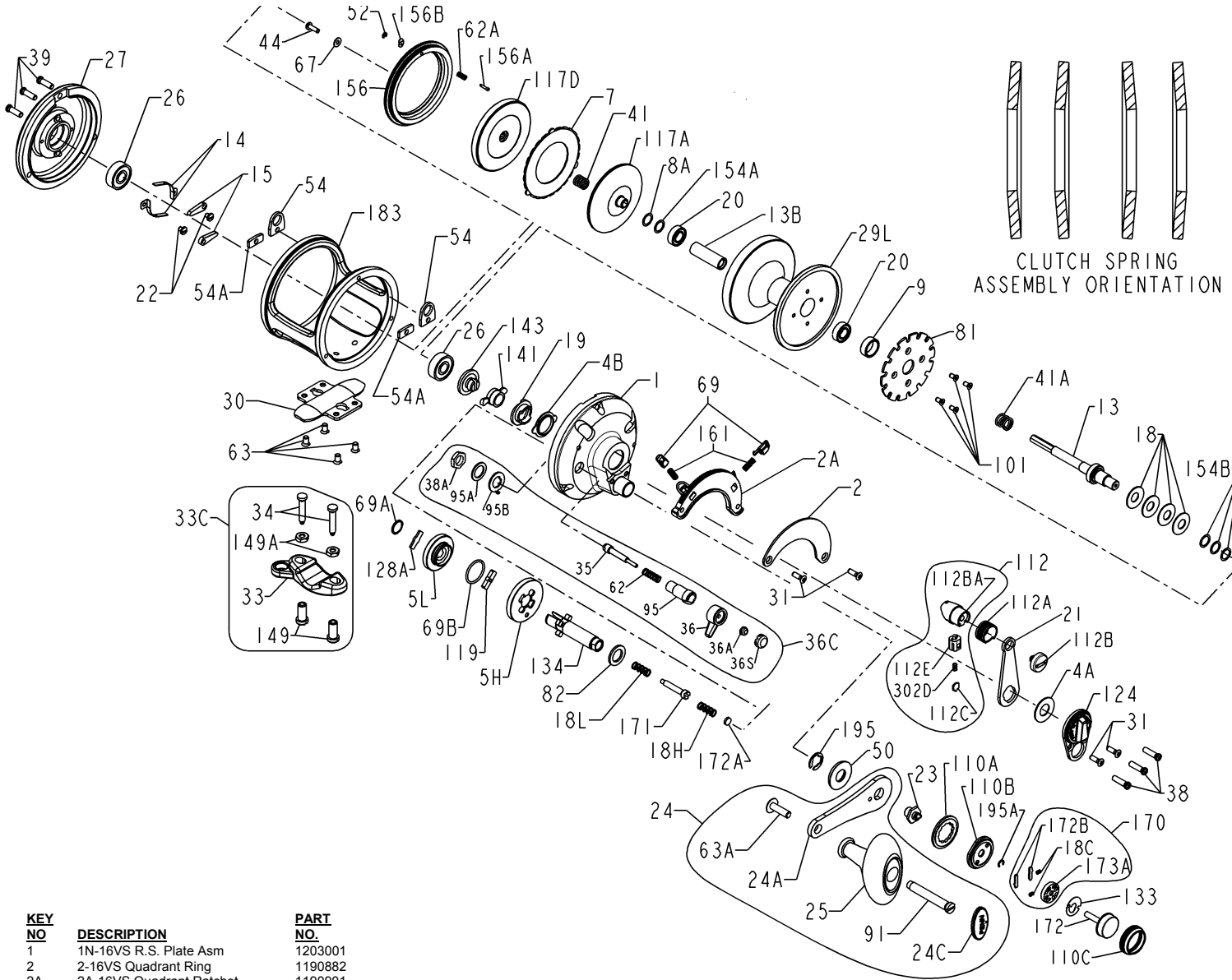


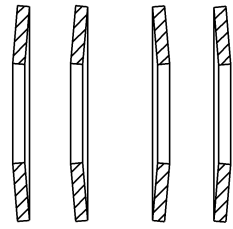


PARTS LIST FOR MODEL 16VSX FOR SERIAL Nos. AFTER J100001

REEL PART NO. 1151028



CLUTCH SPRING ASSEMBLY ORIENTATION



KEY NO	DESCRIPTION	PART NO.
1	1N-16VS R.S. Plate Asm	1203001
2	2-16VS Quadrant Ring	1190882
2A	2A-16VS Quadrant Ratchet	1190901
4A	4-12LT Thrust Washer	1180748
4B	4-30VS Cam Thrust Washer	1180752
5H	5-16VSHSX Main Gear (High)	1190947
5L	5-16VLSX Main Gear (Low)	1190949
7	7-16VS Metal Drag Washer	1191002
8A	8A-TS-4 Shim (as required)	1229046
9	9-16VS Spool Spacing Sleeve	1191037

KEY NO	DESCRIPTION	PART NO.
13	13-16VSX Pinion Gear	1191095
13B	13B-16VS Pinion Sleeve	1191123
14	14-16S Dog Spring (2 req)	1181388
15	15-50 Dog (2 req)	1181425
18	18-16VS Disc Clutch Spring (4 req)	1191204
18C	18C-15KG Shift Catch Spring (2 req)	1181632
18H	18H-30VS Shift Spring (Heavy)	1181634
18L	18L-30VS Shift Spring (Light)	1181637
19	19-16VS Eccentric Cam	1191220

KEY NO	DESCRIPTION	PART NO.
20	20-722 Ball Bearing (2 req)	1181792
21	21-16VS Eccentric Lever	1192625
22	22-109 Dog Spring Screw (2 req)	1181912
23	23-30VS Handle Mounting Screw	1181933
24	24-16VS Handle Assembly	1181969
24A	24A-16VS-1 Handle Blank	1207738
24C	24C-113HN Handle Knob Cap	1182092
25	25S-113HN Handle Knob	1207739
26	26N-40 Bearing (2 req)	1182146
27	27-16VS Left Side Plate-Asm	1191374

KEY NO.	DESCRIPTION	PART NO.
29L	29L-16VS Spool Asm	1192676
30	30-16VS Stand	1182599
31	31T-70 Quad/Bridge Screw (4 req)	1182700
33	33-16VS Rod Clamp	1191592
33C	33C-16VSX Rod Clamp Kit	1191605
34	34-16VS Rod Clamp Screw (2 req)	1182786
35	35N-16VS Click Tongue	1202916
36	36N-50 Click Lever	1183047
36A	36-700 Click Lever Nut	1183014
36C	36C-16VS Click Assembly Kit	1202932
36S	36S-80ST Click Lever Cap	1183051
38	38-16VS R.S. Plate Screw (3 req)	1191723
38A	38-710 Click Bushing Nut	1183157
39	39-16VS L.S. Plate Screw (3 req)	1191739
41	41-109 Bearing Spring	1183329
41A	41-60 Drag Spring	1183327
44	44-710 Pinion End Screw	1183459
50	50-30VS Gear Stud Shield	1191964
52	52-16VS Retaining Ring	1191987
54	54-16S Harness Lug (2 req)	1183850
54A	54A-16VS Harness Plug (2 req)	1183865
62	62-50 Click Spring	1184022
62A	14-99 Drag Lock Spring	1181393
63	31-16VS Stand Screw (4 req)	1191562
63A	63A-16VS Screw	1192088
67	67-16VS Pinion Gear Washer	1192093
69	69-12VS Locating Pin (2 req)	1192105
69A	195-24KG Retaining Ring	1184954
69B	69C-24S Retaining Ring	1184133
81	81-16VS Ratchet	1192152
82	82-24KG Gear Stud Shim	1184219
91	91S-16VS Handle Rivet	1207740
95	95-70 Click Tongue Bushing	1184307
95A	95A-20 Serrated Click Washer	1184310
95B	95A-50 Tab Click Washer	1184311
101	101-30 Ratchet Screw (4 req)	1184403
110A	110A-30VS Handle Screw Lock Ring	1184440
110B	110B-30VS Shift Base	1184446
110C	110C-30VS Shift Button Retainer	1184447
112	112-30VS Drag Lever Knob Asm	1184456
112A	112A-30VS Drag Knob Sleeve	1184460
112B	112B-70 Drag Knob Screw	1184464
112BA	112B-30VS Drag Knob	1192711
112C	112C-30VS Drag Click Plate	1192712
112E	112E-30VS Click Plate Housing	1192713
117A	117AN-16VS Inner Drive Plate	1192716
117D	117DN-16VS Outer Drive Plate	1192718
119	119-24KG Shift Plate	1184515
124	124L-12VS Bridge Cover Asm	1230551
128A	128A-24KG Drive Plate	1184566
133	133-30VS Retaining Plate	1184602
134	134-16VS Gear Stud	1192307
141	141-30VS Cam Follower	1184652
143	143-16VS Preset Screw	1184670
149	149-45 Rod Clamp Nut (2 req)	1184702
149A	149-200 Clamp Screw Nut (2 req)	1184706
154A	154-16VS Shim (as Required)	1192350
154B	154-16VS Shim (3 Req.)	1192350
156	156-16VS Drag Cover	1192352
156A	156A-16VS Drag Lock Pin	1192356
156B	156B-16VS Drag Lock Plate	1192358
161	162-50 Locating Pin Spring (2 req)	1184795
170	170-30VS Catch Assembly	1184809
171	171-15KG Shift Plunger (Screw)	1184811
172	172N-30VS Shift Button Assembly	1226062
172A	172A-15KG Shift Plunger Spacer	1184823
172B	173-30VS Shifter Catch Plate (2 req)	1184835
173A	173A-30VS Shifter Catch Housing	1184848
183	183-16VSX Frame	1192731
195	195-40 Retaining Ring	1184955
195A	67-30VS Retaining Ring	1184105
302D	302D-525MAG Drag Click Plate Spring	1185255