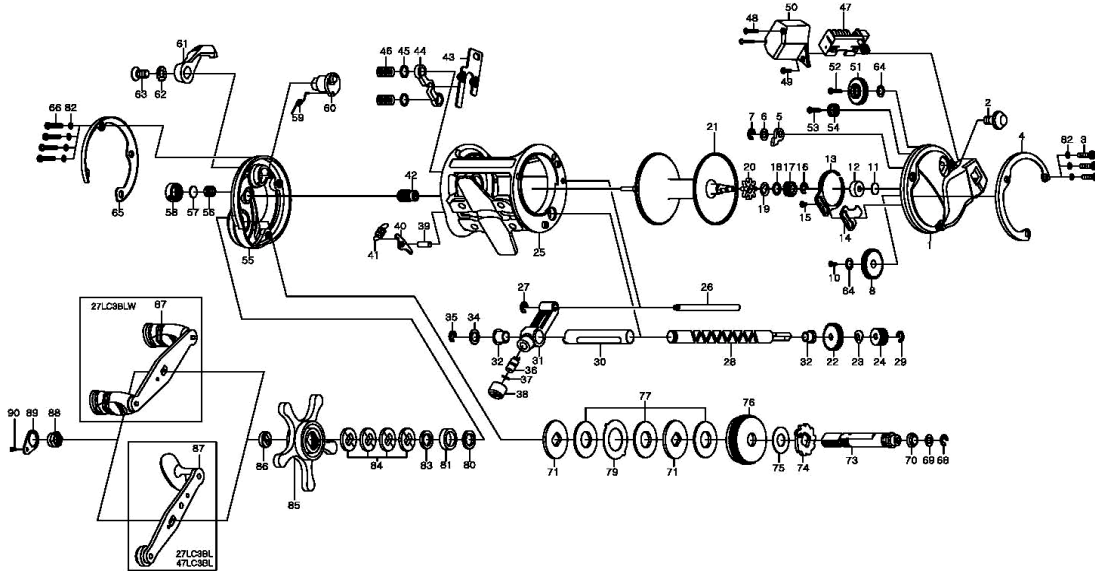


SEALINE SG27LC3BL/SG27LC3BLW SG47LC3BL



| Key No. | SG27LC3BL Part No. | Part Name | SG27LC3BLW Part No. | SG47LC3BL Part No. |
|---------|-----------------------|------------------------|------------------------|-----------------------|
| 1 | 230-2670 | R/S PLATE | 230-2670 | 230-2670 |
| 2 | 330-2860 | CLICK BUTTON | 330-2860 | 330-2860 |
| 3 | 460-4350 | SIDE PLT SCREW | 460-4350 | 460-4350 |
| 4 | 430-1440 | R/S OUTER RING | 430-1440 | 430-1440 |
| 5 | 190-1140 | CLICK PAWL | 190-1140 | 190-1140 |
| 6 | 540-4170 | WASHER (A) | 540-4170 | 540-4170 |
| 7 | 200-0580 | RET | 200-0580 | 200-0580 |
| 8 | 240-2860 | IDLE GEAR | 240-2860 | 240-2860 |
| 10 | 460-2150 | SCREW | 460-2150 | 460-2150 |
| 11 | 540-2830 | WASHER (B) | 540-2830 | 540-2830 |
| 12 | 140-1880 | BALL BEARING | 140-1880 | 140-1880 |
| 13 | 510-5120 | CLICK SPRING | 510-5120 | 510-5120 |
| 14 | 410-3040 | CLICK SPRING RET | 410-3040 | 410-3040 |
| 15 | 460-2260 | CLICK SPRING SCREW | 460-2260 | 460-2260 |
| 16 | 200-0870 | RET | 200-0870 | 200-0870 |
| 17 | 240-2230 | SPOOL GEAR | 240-2230 | 240-2230 |
| 18 | 540-5580 | WASHER | 540-5580 | 540-5580 |
| 19 | 540-5570 | CLICK SPRING WASHER | 540-5570 | 540-5570 |
| 20 | 240-2850 | CLICK GEAR | 240-2850 | 240-2850 |
| 21 | 700-8211 | SPOOL ASSEMBLY | 700-8211 | 700-9740 |
| 22 | 240-2310 | BAIL TRIP LEVER | 240-2310 | 240-2310 |
| 23 | 540-8140 | WASHER | 540-8140 | 540-8140 |
| 24 | 240-2910 | GEAR | 240-2910 | 240-2910 |
| 25 | 700-0931 | FRAME ASSEMBLY | 700-0931 | 700-0971 |
| 26 | 400-2670 | STABILIZER BAR | 400-2670 | 400-2740 |
| 27 | 200-0570 | E-CLIP | 200-0570 | 200-0570 |
| 28 | 470-2100 | WORM SHAFT | 470-2100 | 470-2110 |
| 29 | 200-0570 | E-CLIP | 200-0570 | 200-0570 |
| 30 | 270-0820 | LEVEL WIND GUARD | 270-0820 | 270-0840 |
| 31 | 490-1090 | LINE GUIDE | 490-1090 | 490-1090 |
| 32 | 150-1790 | WORM SHAFT HOLDER | 150-1790 | 150-1790 |
| 34 | 540-9370 | WASHER | 540-9370 | 540-9370 |
| 35 | 200-0590 | RET | 200-0590 | 200-0590 |
| 36 | 400-2580 | LINE GUIDE PAWL | 400-2580 | 400-2580 |
| 37 | 540-3980 | WASHER | 540-3980 | 540-3980 |
| 38 | 380-1740 | PAWL CAP | 380-1740 | 380-1740 |
| 39 | 400-3320 | A/R PAWL PIN | 400-3320 | 400-3320 |
| 40 | 530-0900 | A/R PAWL | 530-0900 | 530-0900 |
| 41 | 510-4210 | A/R PAWL SPRING | 510-4210 | 510-4210 |
| 42 | 260-2050 | PINION GEAR | 260-2050 | 260-2060 |
| 43 | 410-3070 | YOKE PLATE | 410-3070 | 410-3070 |
| 44 | 410-3030 | YOKE | 410-3030 | 410-3030 |
| 45 | 540-5480 | YOKE WASHER | 540-5480 | 540-5480 |
| 46 | 510-5100 | YOKE SPRING | 510-5100 | 510-5100 |
| 47 | 550-1371 | COUNTER ASSEMBLY | 550-1371 | 550-1371 |
| 48 | 460-5241 | SCREW | 460-5241 | 460-5241 |
| 49 | 460-4161 | SCREW | 460-4161 | 460-4161 |
| 50 | 220-3091 | COUNTER COVER | 220-3091 | 220-3091 |
| 51 | 240-2820 | COUNTER GEAR | 240-2820 | 240-2820 |
| 52 | 460-5660 | COUNTER GEAR SCREW | 460-5660 | 460-5660 |
| 53 | 460-5670 | COUNTER GEAR SCREW | 460-5670 | 460-5670 |
| 54 | 240-2830 | COUNTER GEAR | 240-2830 | 240-2830 |
| 55 | 230-2660 | L/S PLATE | 230-2660 | 230-2661 |
| 56 | 510-2440 | SPOOL TENSION SPRING | 510-2440 | 510-2440 |
| 57 | 540-2830 | WASHER B | 540-2830 | 540-2830 |
| 58 | 310-1350 | CAST CONTROL CAP | 310-1350 | 310-1350 |
| 59 | 510-5380 | CLUTCH SPRING | 510-5380 | 510-5380 |
| 60 | 170-1390 | CLUTCH CAM | 170-1390 | 170-1390 |
| 61 | 330-2750 | CLUTCH LEVER | 330-2750 | 330-2750 |
| 62 | 540-5440 | CLUTCH LEVER WASHER | 540-5440 | 540-5440 |
| 63 | 460-4330 | CLUTCH LEVER SCREW | 460-4330 | 460-4330 |
| 64 | 540-6210 | WASHER | 540-6210 | 540-6210 |
| 65 | 430-1430 | L/S OUTER RING | 430-1430 | 430-1430 |
| 66 | 460-6040 | SIDE PLT SCREW | 460-6040 | 460-6040 |
| 68 | 200-0590 | RET | 200-0590 | 200-0590 |
| 69 | 540-6980 | DRIVE SHAFT WASHER | 540-6980 | 540-6980 |
| 70 | 150-1760 | DRIVE SHAFT BUSHING | 150-1760 | 150-1760 |
| 71 | 540-8000 | WASHER (E) | 540-8000 | 540-8000 |
| 73 | 470-3230 | DRIVE SHAFT | 470-3230 | 470-3230 |
| 74 | 240-3040 | A/R RATCHET | 240-3040 | 240-2560 |
| 75 | 540-6990 | DRIVE SHAFT WASHER | 540-6990 | 540-6990 |
| 76 | 250-1380 | DRIVE GEAR | 250-1380 | 250-1380 |
| 77 | 540-8050 | DRAG WASHER | 540-8050 | 540-8050 |
| 79 | 540-7990 | EARED WASHER | 540-7990 | 540-7990 |
| 80 | 540-5550 | WASHER F | 540-5550 | 540-5550 |
| 81 | 140-0570 | BALL BEARING D | 140-0570 | 140-0570 |
| 82 | 540-5170 | WASHER G | 540-5170 | 540-5170 |
| 83 | 540-7210 | WASHER (E) | 540-7210 | 540-7210 |
| 84 | 540-9010 | DRAG SPRING WASHER | 540-9010 | 540-9010 |
| 85 | 320-1260 | STAR DRAG | 320-1260 | 320-1260 |
| 86 | 210-0990 | SPACING SLEEVE | 210-0990 | 210-0990 |
| 87 | 700-9290 | HANDLE | 700-9290 | 700-9290 |
| 88 | 380-2000 | HANDLE NUT | 380-2000 | 380-2000 |
| 89 | 350-0310 | HANDLE NUT PLATE | 350-0310 | 350-0310 |
| 90 | 460-5380 | HANDLE NUT PLATE SCREW | 460-5380 | 460-5380 |