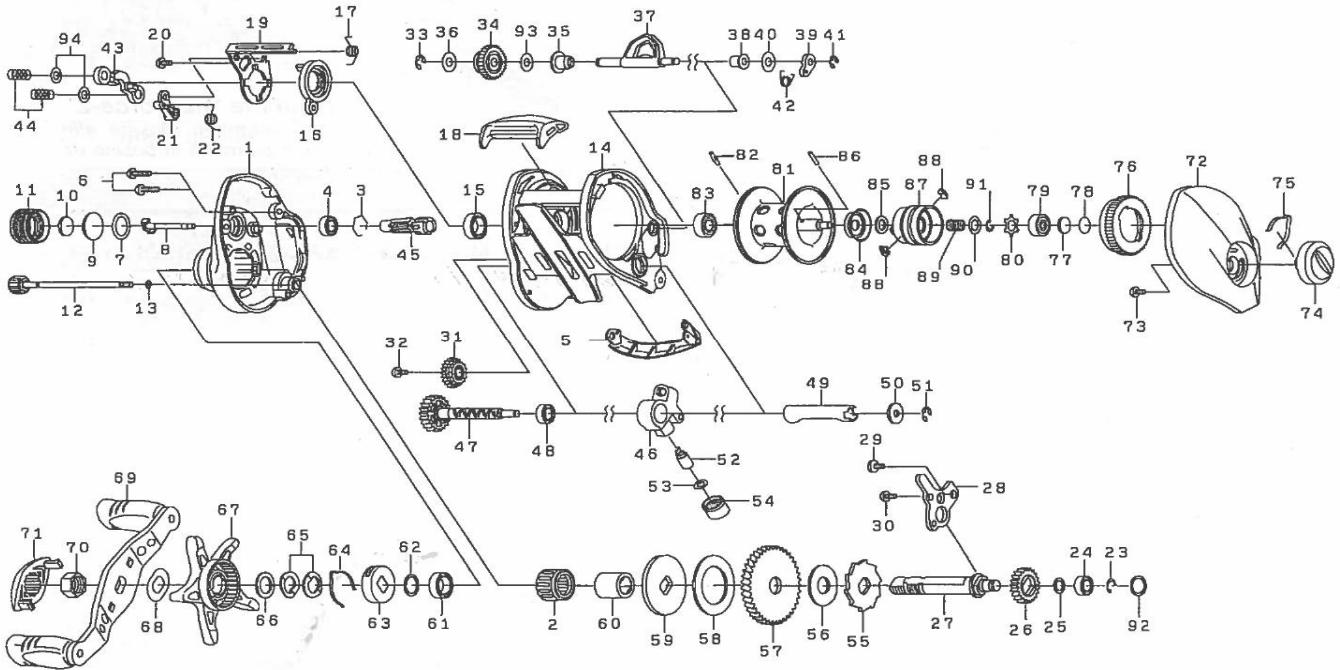




Please order by parts number, not key number
 Veuillez indiquer le numéro de la pièce (Non "Key" No.)

BAITCASTING REEL

MEGAFORCE 100THSL



Key No.	Parts No.	Parts Name	Key No.	Parts No.	Parts Name
1	G97-4205	Left side plate	43	G97-5201	Yoke
2	G93-0501	Roller clutch	44	G85-0301	Yoke spring
3	B42-1601	Bearing retainer (A)	45	H63-6901	Pinion gear
4	B35-8607	Ball bearing (A)	46	G93-3701	Line guide
5	G97-5503	Front plate	47	G93-9901	Worm shaft assembly
6	F93-9701	Left side plate screw (A)	48	G05-1701	Bearing
7	B05-5201	"O" ring (A)	49	G93-4201	Level wind guard
8	G93-1001	Pinion shaft	50	F65-5501	Worm shaft washer
9	375-7501	Spool adjusting cap metal	51	320-5901	Worm shaft retainer
10	B17-5503	Spacer (A)	52	F51-6501	Line guide pawl
11	H21-3601	Cast control cap	53	373-1300	Line guide washer
12	G93-1101	Left side plate screw (B)	54	F40-2801	Pawl cap
13	B85-3101	"O" ring (B)	55	G93-4301	Clutch wheel
14	G97-4305	Frame assembly	56	G93-4401	Drive shaft washer
15	B86-1704	Ball bearing (B)	57	H35-0302	Drive gear (B)
16	G97-4401	Clutch cam (A)	58	G93-4601	Drag washer
17	G97-4501	Clutch cam spring (A)	59	G93-4701	Key washer
18	G93-1801	Clutch lever	60	G93-4801	Gear shaft collar
19	G97-4601	Clutch cam (B)	61	B86-1704	Ball bearing (B)
20	G19-3701	Clutch cam screw	62	B55-3801	Bearing washer
21	G97-4701	Clutch trip lever	63	F02-8203	Click leaf spring holder
22	G97-4801	Clutch cam spring (B)	64	F03-2401	Click leaf spring
23	320-8002	Retainer (A)	65	150-8901	Drag spring washer
24	B35-8607	Ball bearing (A)	66	373-7810	Spacing sleeve
25	E09-6501	Washer (A)	67	H63-0202	Star drag
26	G93-2201	Drive gear (A)	68	150-9001	Friction washer
27	H61-5602	Drive shaft	69	H63-0301	Handle assembly
28	G93-2401	Drive shaft retainer	70	F84-9904	Handle nut
29	G19-3701	Drive shaft retainer screw (A)	71	G96-9901	Handle nut plate
30	G17-1402	Drive shaft retainer screw (B)	72	H63-0901	Right side plate
31	G93-2501	Idle gear	73	F21-2201	Set plate screw
32	G19-3701	Idle gear screw	74	G93-6218	Brake adjusting knob
33	320-1402	Retainer (B)	75	H08-4401	Brake click spring
34	H63-0701	Gear assembly	76	H02-9701	Magnet holder
35	G93-2801	Bushing (A)	77	375-7411	Spacer (B)
36	G82-3801	Washer (B)	78	375-7404	Spacer (C)
37	G97-5006	Lever	79	G51-1504	Ball bearing (C)
38	G93-3101	Bushing (B)	80	H18-0501	Bearing retainer (B)
39	G93-3202	Plate	81-91	Z01-8872	Spool assembly
40	G53-9402	Washer (C)	92	H30-6600	Washer (D)
41	B33-9801	Retainer (C)	93	H58-3301	Washer (E)
42	G97-5101	Lever spring	94	B41-1706	Yoke washer