

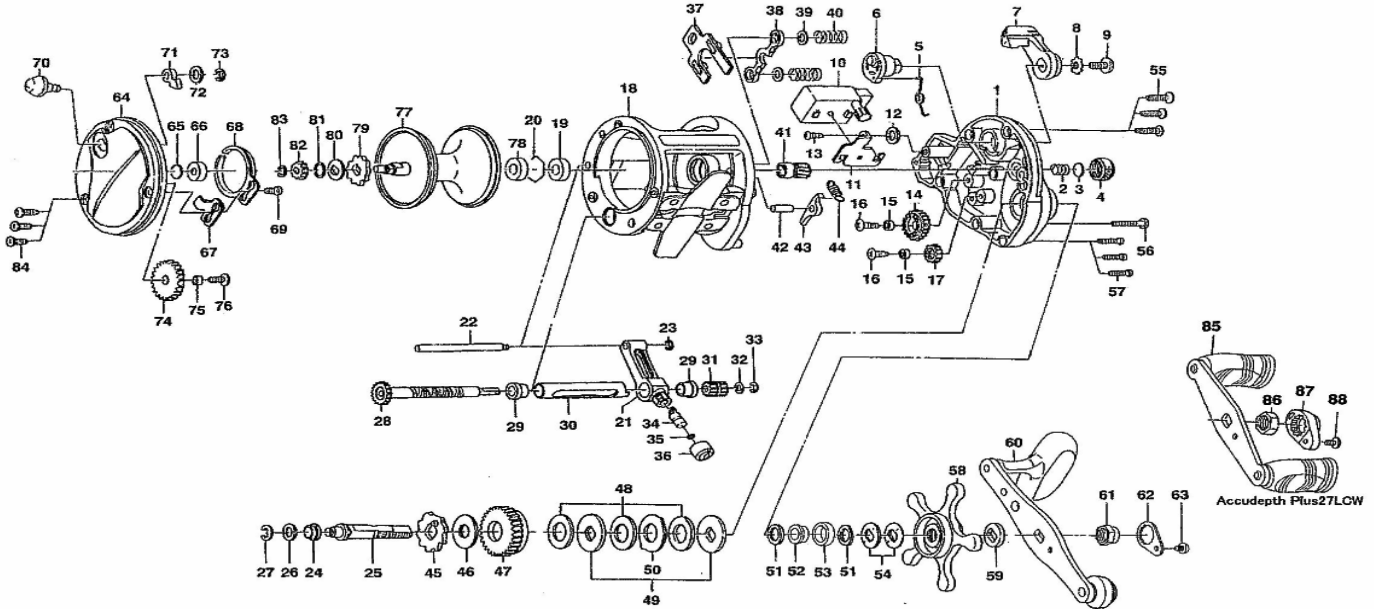
Please order by parts number, not key number  
 Veuillez indiquer le numéro de la pièce (Non "Key" No.)



# ACCUDEPTH PLUS 27LC/27LCW/47LC

CONVENTIONAL REEL

Accudepth Plus 27LC



Key	Parts No.	Parts Name	Key No.	Parts No.	Parts Name	Key No.	Parts No.	Parts Name
1	G90-4001	Right side plate	43	B62-6801	Anti-reverse pawl	85	G90-5301	Handle assembly
2	B93-9601	Spool tension spring	44	E23-4201	Anti-reverse pawl spring	86	B86-2102	Handle nut
3	375-7405	Washer (A)	45	E25-2801	Clutch wheel	87	E44-0001	Handle nut plate
4	B93-9701	Cast control cap	46	374-6604	Drive shaft washer(B)	88	351-1803	Handle nut plate
5	E32-2301	Clutch spring	47	F09-3401	Drive gear	<b>47LC Special parts</b>		
6	F09-2001	Clutch cam	48	E32-6501	Drag washer	1	G90-4002	Right side plate
7	E42-6805	Clutch lever	49	E20-0201	Key washer	18	G90-4501	Frame assembly
8	160-8001	Clutch lever lock	50	376-3101	Eared washer	22	F09-5801	Stabilizer bar
9	E00-7601	Clutch lever screw	51	373-7806	Washer (B)	28	F09-5501	Worm shaft
10	F09-2102	Counter assembly	52	E32-6301	Spacing sleeve(A)	30	F09-5701	Level wind guard
11	E24-1801	Counter plate	53	E32-6401	Bushing (A)	41	F09-3201	Pinion gear
12	373-1300	Counter washer	54	E25-3501	Drag spring washer	64	F09-3707	Left side plate
13	E31-6701	Counter screw	55	G90-4201	Right side plate screw(A)	77	G90-5201	Spool
14	E24-1901	Counter gear (A)	56	B00-9701	Rightsideplate screw(B)	78	G38-7801	Bushing
15	B65-6201	Counter gear collar	57	E11-9602	Star drag			
16	E10-7401	Counter gear screw	58	E25-3601	Star drag			
17	F09-2201	Counter gear (B)	59	E25-3901	Spacing sleeve(B)			
18	G90-4101	Frame assembly	60	G90-4301	Handle assembly			
19	F07-8301	Bushing	61	G79-3301	Handle nut			
20	B27-0501	Bearing retainer	62	040-3207	Handle nut plate			
21	E36-2401	Line Guide	63	353-8301	Handle nut plate screw			
22	F09-3001	Stabilizer bar	64	F09-3706	Left side plate			
23	320-5901	Stabilizer bar retainer	65	375-7405	Washer (C)			
24	E25-2501	Drive shaft Bushing	66	637-5601	Bushing (B)			
25	E25-2601	Drive- shaft	67	B21-5501	Click spring retainer			
26	375-5805	Drive shaft washer(A)	68	160-7922	Click spring			
27	320-7602	Drive shaft retainer	69	B83-4402	Click spring screw			
28	F09-2601	Worm shaft assembly	70	B21-6601	Click button			
29	E14-4801	Worm shaft holder	71	030-6611	Click pawl			
30	F09-2801	Level wind guard	72	373-1600	Washer(D)			
31	F09-2901	Counter gear(C)	73	320-1402	Click pawl retainer			
32	B41-1702	Worm shaft holder	74	B21-5801	Idle gear			
33	320-5901	Worm shaft retainer	75	B65-6201	Idle gear collar			
34	122-0601	Line guide pawl	76	E10-7401	Idle gear screw			
35	F95-0200	Line guide washer	77	G90-4701	Spool			
36	E35-4101	Pawl cap	78	G38-7401	Bushing (C)			
37	F09-3101	Yoke plate	79	B21-6701	Click gear			
38	E25-9101	Yoke	80	E36-1402	Click spring washer			
39	E03-7706	Yoke washer	81	E15-4801	Washer (E)			
40	E33-5301	Yoke spring	82	403-2901	Spool gear			
41	F13-5401	Pinion gear	83	320-8002	Spool gear retainer			
42	E25-2301	Anti-reverse pawl pin	84	G90-4201	Left side plate screw			