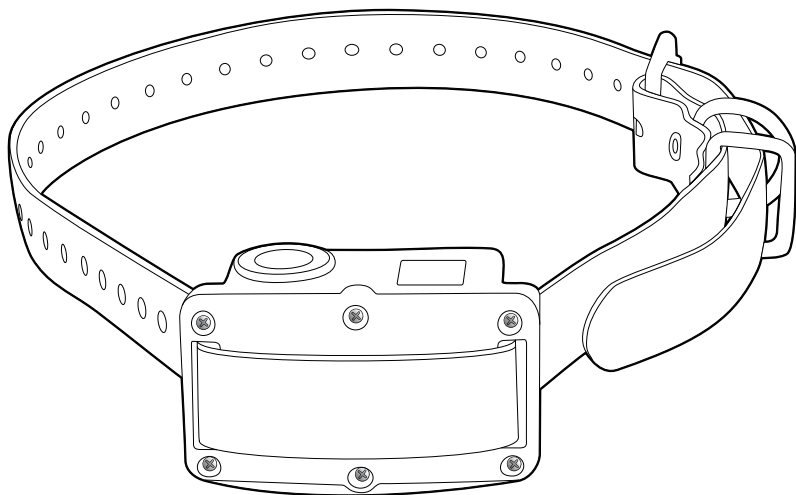




protect. teach. love.®

Rechargeable Bark Control Collar

operating guide



PLEASE READ THIS ENTIRE GUIDE BEFORE BEGINNING

IMPORTANT SAFETY INFORMATION

Explanation of Attention Words and Symbols used in this guide

! This is the safety alert symbol. It is used to alert you to potential personal injury hazards. Obey all safety messages that follow this symbol to avoid possible injury or death.

⚠ WARNING **WARNING** indicates a hazardous situation which, if not avoided, could result in death or serious injury.

⚠ CAUTION **CAUTION**, used with the safety alert symbol, indicates a hazardous situation which, if not avoided, could result in minor or moderate injury.

CAUTION **CAUTION**, used without the safety alert symbol, indicates a hazardous situation which, if not avoided, could result in harm to your pet.

⚠ WARNING

- Risk of explosion if battery is replaced by an incorrect type. Do not short circuit, mix old and new batteries, dispose of in fire, or expose to water. When batteries are stored or disposed, they must be protected from shorting. Dispose of used batteries properly.
- Not for use with aggressive dogs. Do not use this product if your dog is prone to aggressive behavior. Aggressive dogs can cause severe injury or death to their owners and others. If you are not sure that this product is right for your dog, please talk to your veterinarian or a certified trainer.

⚠ CAUTION

The Bark Control Collar is not a toy. Keep it away from the reach of children. Use it only for its bark stopping purpose.

CAUTION

Risk of skin damage. Please read and follow the instructions in this manual. Proper fit of the collar is important. A collar worn for too long or made too tight on the pet's neck may cause skin damage. Ranging from redness to pressure ulcers; this condition is commonly known as bed sores.

- Avoid leaving the collar on the dog for more than 12 hours per day.
- When possible reposition the collar on the pet's neck every 1 to 2 hours.
- Check the fit to prevent excessive pressure; follow the instructions in this manual.
- Never connect a lead to the electronic collar; it will cause excessive pressure on the contacts.
- When using a separate collar for a lead, don't put pressure on the electronic collar.
- Wash the dog's neck area and the contacts of the collar weekly with a damp cloth.
- Examine the contact area daily for signs of a rash or a sore.

- If a rash or sore is found, discontinue use of the collar until the skin has healed.
- If the condition persists beyond 48 hours, see your veterinarian.
- For additional information on bed sores and pressure necrosis, please visit our website.

These steps will help keep your pet comfortable and safe. Millions of pets are comfortable while they wear stainless steel contacts. Some pets are sensitive to contact pressure. You may find after some time that your pet is very tolerant of the collar. If so, you may relax some of these precautions. It is important to continue daily checks of the contact area. If redness or sores are found, discontinue use until the skin has fully healed.

The PetSafe® Rechargeable Bark Control Collar must be used only on healthy dogs. We recommend that you take your dog to a veterinarian before using the collar if he is not in good health.

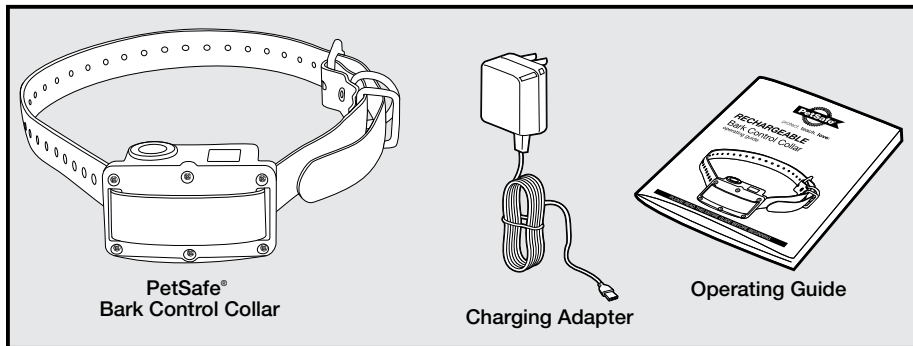
Thank you for choosing the PetSafe® brand. You and your pet deserve a companionship that includes memorable moments and a shared understanding together. Our products and training tools enhance the relationship between pets and their owners. If you have any questions about our products or training your pet, please visit our website at www.petsafe.net or contact our Customer Care Center at 1-800-732-2677.

To get the most protection out of your warranty, please register your product within 30 days at www.petsafe.net. By registering and keeping your receipt, you will enjoy the product's full warranty and should you ever need to call the Customer Care Center, we will be able to help you faster. Most importantly, PetSafe® brand will never give or sell your valuable information to anyone. Complete warranty information is available online at www.petsafe.net.

Table of Contents

Components	5
Features	5
How the Bark Control Collar Works	5
Key Definitions	6
Charging the Bark Control Collar	6
Fit the Bark Control Collar	7
Choose Between Three Bark Control Settings	7
What to Expect During Use of the Bark Control Collar	9
Frequently Asked Questions	10
Troubleshooting	10
Terms of Use and Limitation of Liability	10
Customer Care International	11
Battery Disposal	11
Perchlorate Battery	11
Compliance	11
Warranty	12

Components



Features

- 10 Levels of progressive static correction
- Choose between 3 correction modes to fit your dog's temperament
- Rechargeable battery and digital display
- Patented Perfect Bark™ technology ensures your dog's bark is the only sound that will cause the correction
- Waterproof

How the Bark Control Collar Works

The PetSafe® Rechargeable Bark Control Collar uses several features designed to shorten the training phase and promote good behavior.

First, the Rechargeable Bark Control Collar has a unique patented sensor that provides the most reliable bark detection available. The Bark Control Collar uses both vibration and sound sensors (dual-detection) to discriminate each bark from other external noises. A static correction is administered through the Contact Points only if both the vibration from the vocal chords and the sound from the bark match the same criteria.

Key Definitions

Digital Display: Displays the current correction mode based on light color(s) and the numeric indicator. Also indicates the condition of the battery.

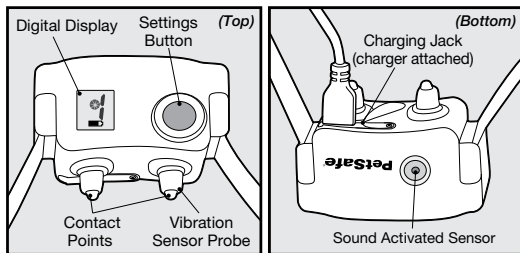
Settings Button: Adjusts the correction mode and the level of correction your dog receives when barking. Also used to turn the Rechargeable Bark Control Collar on and off.

Contact Points: Deliver the static correction.

Vibration Sensor Probe: Detects the vibrations of your dog's barking.

Charging Jack: For connecting the charging adapter. Although the bark control unit is waterproof, keep the cover in place when not charging to keep debris out of the opening.

Sound-Activated Sensor: Detects your dog's bark.



Charging the Bark Control Collar

Before using the PetSafe® Rechargeable Bark Control Collar for the first time, be sure to charge the unit by following the steps described below.

Follow these steps to charge the battery:

1. Lift the rubber cover protecting the Charging Jack.
2. Connect the charger connector to the Charging Jack.
3. Plug the charger into a standard wall outlet. The display light will flash the sequence Green-Blue-Red to indicate that charging has started.
4. During charging, keep the Bark Control Collar in an open, well-ventilated area. The display light will flash red twice every 10 seconds to indicate that charging is active.
5. When charging is complete, the charger will automatically shut off, preventing overcharging. The display light will flash green twice every 10 seconds to indicate that charging is complete. *Note: The battery should fully charge in less than 4 hours.*
6. Remove the charger from the Charging Jack. The light will flash the sequence Red-Blue-Green to indicate the unit is no longer charging.
7. When charging is complete, replace the Charging Jack cover and unplug the battery charger. The Rechargeable Bark Control Collar will automatically turn off when the battery charger is connected. Following a charge, turn the unit back on before using.

Note: When the unit indicates that the battery is low (battery icon on the display indicates 1 bar or less and/or the light flashes red 3 times every 5 seconds) it is time to recharge the unit. If the battery pack is very low (i.e. been used too long or stored for an extended period of time) it may take some time for the unit to indicate that charging has started. If the unit does not indicate that it is charging after 1 hour, please contact our Customer Care Center.

Battery Life

Average battery life is 3 to 6 months, depending on how often your dog barks. However, due to greater use during your dog's training, your first battery charge may not last as long. To conserve battery life, turn the Bark Control Collar off when not in use.

Fit the Bark Control Collar

Important: The proper fit and placement of your Bark Control Collar is important for effective operation. The Contact Points must have direct contact with your dog's skin on the underside of his neck.

To assure a proper fit, please follow these steps:

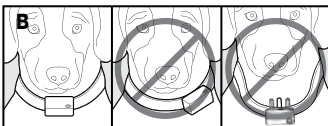
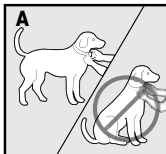
1. Make sure the Bark Control unit is off.
2. Have your dog standing comfortably (A).
3. Place the Bark Control Collar on your dog's neck close to the ears. Center the Contact Points underneath your dog's neck, touching the skin (B).

Note: It is sometimes necessary to trim the hair around the Contact Points to make sure that contact is consistent.

CAUTION Do not shave the pet's neck as this may increase the risk of skin irritation.

4. Check the tightness of the Bark Control Collar by inserting one finger between a Contact Point and the dog's neck (C). The fit should be snug but not constricting.
5. Allow your dog to wear the collar for several minutes, then recheck the fit. Check the fit again as your dog becomes more comfortable with the Bark Control Collar.

CAUTION The Receiver Collar should not be worn for more than 12 hours out of every 24-hour period. Leaving the collar on too long could lead to skin irritation.



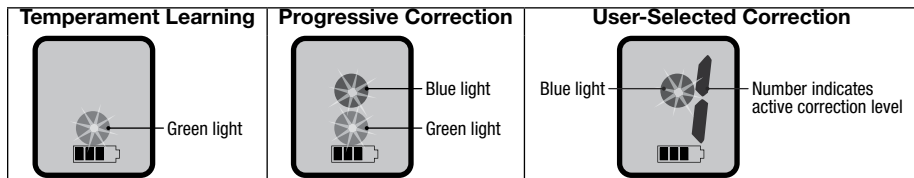
Choose Between Three Bark Control Settings

The Rechargeable Bark Control Collar has three bark control settings that allow you to choose how corrections are delivered. The modes are indicated on the digital display by light color(s) and the numeric indicator.

1. The **Temperament Learning mode** tracks the number of corrections needed to substantially reduce (and in most cases eliminate) the number of nuisance barks. The system provides 10 levels of static correction. It begins with a low-level correction (Level 0). However, if excessive barking continues, the correction intensity will increase with each successive bark (to a maximum of Level 9) until the barking stops. This correction level becomes the starting level the next time the dog barks. Once your dog has learned to reduce his barking, the initial warning corrections are automatically reduced.

- The **Progressive Correction mode** starts at the lowest level (Level 0) and progresses to the next level (to a maximum of Level 9) each time your dog barks within 30 seconds of the previous bark. If your dog does not bark again within 30 seconds, the correction level will automatically reset to Level 0.
- The **User-Selected Correction mode** allows you to manually select the correction level (0-9).
Note: In User-Selected mode, always start training at the lowest level of correction (Level 0). Watch how your dog reacts, and if necessary, progress to the next correction level.

Note: As a built-in safety feature, if your dog barks 15 times or more within an 80 second period, the Bark Control Collar will automatically shut off for 3 minutes. This safety feature is active in all three modes of operation.



Note: When the operating mode is changed, the correction level is automatically reset to Level 0.

The Rechargeable Bark Control has a single Settings Button that allows you to turn the unit on and off, display or change the current correction mode, and change the correction level. The following table describes how to perform the different tasks.

Task	Steps to perform	Indications
Turn the unit on	Press and release the settings button while the unit is off.	The light will flash green five times and then display the current correction mode as described on previous page.
Turn the unit off	Press the settings button until the display goes blank and the red light appears. Release the button.*	The light will flash red four times and the unit will turn off.
Display current correction mode	Press and hold the settings button for less than 2 seconds before releasing it.	The unit will display the current correction mode and battery condition, as described on previous page.

Change active correction mode	<ol style="list-style-type: none"> 1. Press and hold the settings button for at least 5 seconds. 2. Continue to hold the settings button to advance to the next available mode. 3. When the desired mode is displayed, release the button. 4. Once the button has been released for 5 seconds, the new correction mode will activate. 5. If the settings button is released too early, simply press it again within 5 seconds. 	<ul style="list-style-type: none"> • Mode will advance and be displayed as described on previous page. • Every 2 seconds the mode will advance and be displayed. • The selected mode will be displayed during this time. • The display will flash four times and the unit will resume normal operation using the new correction mode.** • The mode will advance and continue as described in Step 2.
--------------------------------------	---	---

* If you continue to hold the settings button for more than 5 seconds, you will begin changing the correction mode. You must release the settings button before attempting to turn off the unit.

** The light will flash every five seconds to indicate the current mode.

What to Expect During Use of the Bark Control Collar

Important: Do not leave your dog alone the first few times he receives a correction.

Place the Rechargeable Bark Control Collar properly on your dog and wait nearby until he barks. Most dogs will understand very quickly that the Bark Control Collar is disrupting their urge to bark and will relax and stop barking. Because the static correction from the Bark Control Collar may be surprising or startling at first, some dogs may bark more at the initial correction.

On rare occasions, a dog may get into a bark-correction-bark-correction cycle. If this happens, reassure your dog with calm, soothing tones. As your dog relaxes, he will understand that if he becomes quiet, he will not receive any more static corrections. The small minority of dogs that have this reaction will only have it the first time they wear the Bark Control Collar.

You should notice a reduction in your dog's barking within the first couple of days that he wears the Bark Control Collar. At this point, it is important to remember the learning process is still not complete. Dogs will "test" this new learning experience and will increase their attempts to bark. This usually occurs during the second week a dog wears the Bark Control Collar. If this does occur, remain consistent and do not alter your use of the Bark Control Collar. You must place the Bark Control Collar on your dog in every situation when you expect him to be quiet. If your dog is not wearing the Bark Control Collar, he may resume barking and his learning would suffer a setback.

FREQUENTLY ASKED QUESTIONS

Will another dog's bark set off the Bark Control Collar?	No. It includes dual detection which eliminates false corrections.
Will the Bark Control Collar work for my dog?	The Bark Control Collar is safe and effective for most breeds and sizes of dogs. However, the Rechargeable Bark Control Collar is recommended for dogs 40+ lbs.
Can I attach a leash to the Bark Control Collar?	No. This can result in pulling the Contact Points too tightly against your dog's neck. Attach a leash to a separate, non-metallic collar or a harness, making sure the extra collar does not put pressure on the Contact Points.

TROUBLESHOOTING

My dog keeps barking (does not respond to the static correction).	<ul style="list-style-type: none">• Tighten the Bark Control Collar and/or trim your dog's hair where the Contact Points touch his neck to ensure good skin contact.• Charge the battery.• If your dog still does not respond, contact the Customer Care Center.
The Display light(s) stopped flashing.	<ul style="list-style-type: none">• Ensure that the unit is turned on.• Fully charge the battery.• If the Display light(s) still do not flash, contact the Customer Care Center.

Terms of Use and Limitation of Liability

1. Terms of Use

This Product is offered to you conditioned upon your acceptance without modification of the terms, conditions and notices contained herein. Usage of this product implies acceptance of all such terms, conditions, and notices.

2. Proper Use

This Product is designed for use with pets where training is desired. The specific temperament or size/weight of your pet may not be suitable for this Product. Radio Systems® Corporation recommends that this Product is not used if your pet is aggressive and accepts no liability for determining suitability in individual cases. If you are unsure whether this Product is appropriate for your pet, please consult your veterinarian or certified trainer prior to use. Proper use includes, without limitation, reviewing the entire Operating Guide and any specific Caution statements.

3. No Unlawful or Prohibited Use

This Product is designed for use with pets only. This pet training device is not intended to harm, injure, or provoke. Using this product in a way that is not intended could result in violation of Federal, State or local laws.

4. Limitation of Liability

In no event shall Radio Systems® Corporation be liable for any direct, indirect, punitive, incidental, special or consequential damages, or any damages whatsoever arising out of or connected with the use or misuse of this Product. Buyer assumes all risks and liability from the use of this Product.

5. Modification of Terms and Conditions

Radio Systems® Corporation reserves the right to change the terms, conditions and notices under which this Product is offered.

Customer Care International

USA & Canada - Tel: 800-732-2677

Monday - Friday 8 AM - 8 PM / Saturday 9 AM - 5 PM (EST)

Australia - Tel: 1800 786 608

Monday - Friday 8:30 AM - 5 PM

New Zealand - Tel: 0800 543 054

Monday - Friday 10:30 AM - 7 PM



Battery Disposal

Separate collection of spent batteries is required in many regions; check the regulations in your area before discarding spent batteries. At the end of the product life, please contact our Customer Care Center to receive instructions on proper disposal of the unit. Please do not dispose of the unit in household or municipal waste. For a listing of Customer Care Center telephone numbers in your area, visit our website at www.petsafe.net.

Perchlorate Battery

Perchlorate Material – special handling may apply. See www.dtsc.ca.gov/hazardouswaste/perchlorate.

Compliance

FCC

This device complies with part 15 of the FCC Rules. Operation is subject to the following two conditions: (1) This device may not cause harmful interference, and (2) this device must accept any interference received, including interference that may cause undesired operation.

CAUTION: Modification or changes to this equipment not expressly approved by Radio Systems® Corporation may void the user's authority to operate the equipment.

NOTE: This equipment has been tested and found to comply with the limits for a Class B digital device, pursuant to part 15 of the FCC Rules. These limits are designed to provide reasonable protection against harmful interference in a residential installation. This equipment generates, uses, and can radiate radio frequency energy and, if not installed and used in accordance with the instructions, may cause harmful interference to radio communications. However, there is no guarantee that interference will not occur in a specific installation. If interference does occur to radio or television reception, which can be determined by turning the equipment off and on, the user is encouraged to try to correct the interference by one or more of the following measures:

- Reorient or relocate the receiving antenna.
 - Increase the separation between the equipment and the receiver.
 - Connect the equipment to an outlet on a circuit different from that to which the receiver is connected.
 - Consult customer care, the dealer, or an experienced radio/TV technician for help.
-

Warranty

One Year Non-Transferrable Limited Warranty

This Product has the benefit of a limited manufacturer's warranty. Complete details of the warranty applicable to this Product and its terms can be found at www.petsafe.net.

Australia/New Zealand - In compliance with the Australian Consumer Law, Warranties Against Defects, effective January 1, 2012, warranty details of this Product are as follows:

One Year Non-Transferrable Limited Warranty

What is covered: Radio Systems Australia Pty Ltd (hereinafter referred to as "Radio Systems") warrants to the original retail purchaser, and not any other purchaser or subsequent owner, that its Product, when subject to normal and proper residential use, will be free from defects in material or workmanship for a period of one (1) year from the purchase date. An "original retail consumer purchaser" is a person or entity who originally purchases the Product, or a gift recipient of a new Product that is unopened and in its original packaging. When serviced by Radio Systems Customer Service, Radio Systems covers labor and parts for the first year of ownership; after the first year, a service or upgrade charge will apply relative to replacement of the Product with new or refurbished items at Radio System's sole discretion.

The limited warranty is non-transferrable and shall automatically terminate if the original retail consumer purchaser resells the Radio Systems Product or transfers the property on which the Radio Systems Product is installed. This Limited Warranty excludes accidental damage due to dog chews; lightning damage; or neglect, alteration, and misuse. Consumers who purchase Products outside of Australia, New Zealand, or from an unauthorized dealer will need to return the Product to the original place of purchase for any warranty issues.

Please note that Radio Systems does not provide refunds, replacements, or upgrades for change of mind, or for any other reason outside of these Warranty terms.

Claims Procedure:

Any claim made under this Warranty should be made directly to Radio Systems Australia Pty Ltd Customer Care Centre at:

Radio Systems Australia Pty Ltd

PO Box 765, Mudgeeraba QLD 4213

Australia Residents: 1800 786 608

New Zealand Residents: 0800 543 054

Email: info@petsafeaustralia.com.au

To file a claim, a proof of purchase must be provided. Without a proof of purchase, Radio Systems will not repair or replace faulty components. Radio Systems requests the Consumer to contact the Radio Systems Customer Care Centre to obtain a Warranty Return number, prior to sending the Product. Failure to do so may delay in the repair or replacement of the Product.

If the Product is deemed to be faulty within 30 days from date of original purchase, Radio Systems will organise for a replacement to be sent in advance of returning the faulty Product. A Post Bag will be included with the replacement Product for the return of the faulty Product. The Product must be returned within 7 days of receiving the replacement. If the Product is deemed to be faulty after 30 days from the date of original purchase, the consumer will be required to return the Product to Radio Systems at the consumer's own expense. Radio Systems will test and replace the faulty unit or its components and return to the consumer free of charge, provided the Product is within its said warranty period. This warranty is in addition to other rights and remedies available to you under the law. Radio Systems goods come with guarantees that cannot be excluded under the Australia Consumer Law. You are entitled to a replacement or refund for a major failure and for compensation for any other reasonably foreseeable loss or damage. You are also entitled to have the goods repaired or replaced if the goods fail to be of acceptable quality and the failure does not amount to a major failure.

Should you have any queries or require any further information, please contact our Customer Care Centre on 1800 786 608 (Australia) or 0800 543 054 (New Zealand).

Radio Systems® Corporation

10427 PetSafe Way

Knoxville, TN 37932

1-800-732-2677

www.petsafe.net

400-1936

©2014 Radio Systems Corporation

DO NOT PRINT THIS PAGE

Radio Systems [®] CORPORATION The world leader in pet training products	RSC Part #: 400-1936
	Description: MANUAL PBC00-15254
Material: 100gsm Wood Free Paper Printing: Black Finishing: Die Cut, Fold, 2 Saddle Stitch, and Bulk Pack	Created by: T King
	Initial Creation Date: 11/08/2014
	Approved by: L Taylor
	Date Approved: 12/15/14
	Program used: INDESIGN CC
	Revision: 000 PRO: RSC11357
	Revision Description: Initial Release to Production
Revision Date: N/A	