

INSTALLATION INSTRUCTIONS

EQUIPMENT REQUIRED:

WIRING ACCESS LOCATION: PU3**DRILL BITS:****HITCH REQUIRES 1/2" PIN AND CLIP****WRENCHES:** (TIGHTEN ALL FASTENERS WITH TORQUE WRENCH) 18mm, 3/4, 7/8

VEHICLE

CHEVROLET S-10 PICKUP GMC S-15 PICKUP
 GMC SONOMA PICKUP ISUZU HOMBRE
 (INCLUDING SPORT SIDE
 BED MODELS)

3500 LB MAX GROSS TRAILER WT
 300 LB MAX TONGUE WEIGHT
 DO NOT EXCEED TOWING VEHICLE RATINGS



HITCH SHOWN IN PROPER POSITION

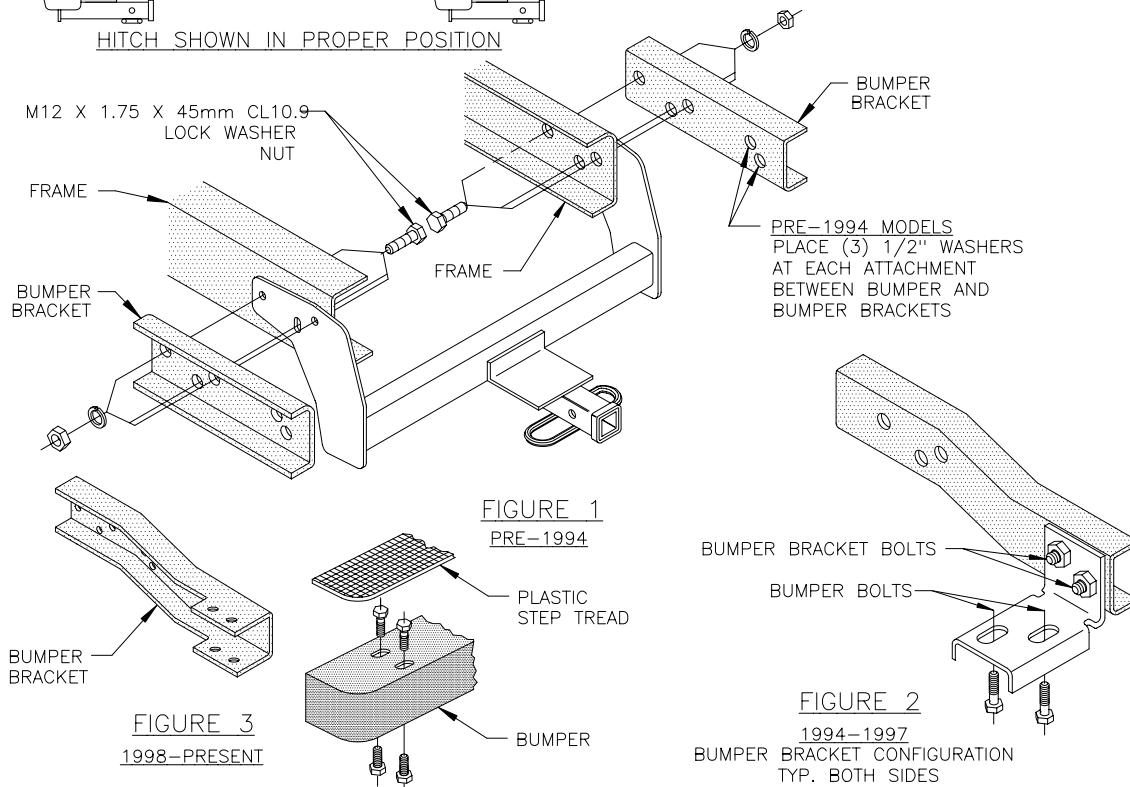


FIGURE 1
PRE-1994

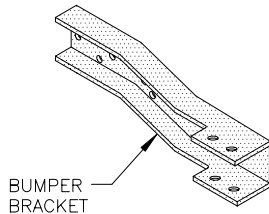


FIGURE 3
1998-PRESENT

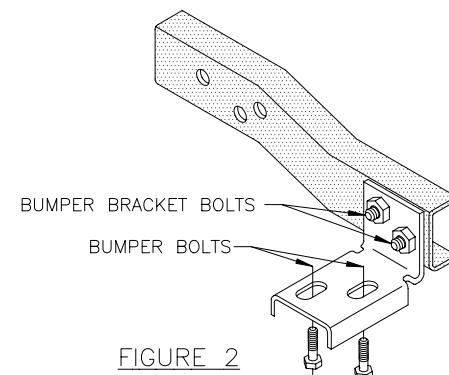
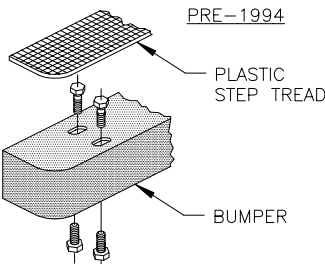


FIGURE 2

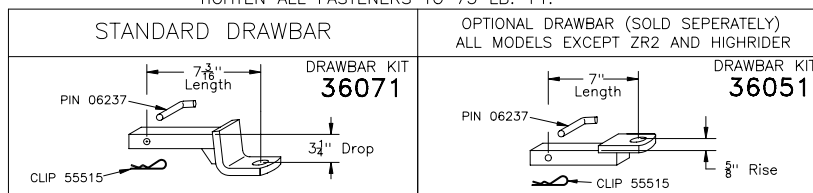
SPORTSIDE BED MODELS

NOTE: SOME SPARE TIRES MAY NEED TO BE LOWERED AND REPOSITIONED SLIGHTLY FOR HITCH INSTALLATION.

1. REMOVE BUMPER BRACKET BOLTS AND RETURN TO VEHICLE OWNER.
2. POSITION HITCH ON FRAME AND INSTALL FASTENERS AS SHOWN ABOVE.

STEP BUMPER MODELS

1. REMOVE BUMPER, LEAVING BRACKETS ATTACHED TO FRAME. DISCONNECT BUMPER WIRING BEFORE REMOVING BUMPER.
NOTE: PRE-1994 MODELS: BUMPER IS ATTACHED TO EACH BUMPER BRACKET BY TWO (2) HORIZONTAL BOLTS.
1994-1997 MODELS: BUMPER IS ATTACHED TO EACH BUMPER BRACKET BY TWO (2) VERTICAL BOLTS.
 (SEE FIGURE 2.)
1998-PRESENT MODELS: REMOVE PLASTIC STEP TREAD FROM THE TOP OF THE BUMPER. THE BUMPER IS ATTACHED TO EACH BUMPER BRACKET BY FOUR (4) VERTICAL BOLTS.
2. REMOVE BUMPER BRACKETS FROM FRAME. REMOVE BUMPER WIRING GUIDES FROM BUMPER BRACKETS.
NOTE: STEPS 3 AND 4 REQUIRED FOR EARLY MODEL VEHICLES USING A CRADLE STORAGE SYSTEM FOR SPARE TIRE.
3. MARK SPARE TIRE CARRIER 1/8" INBOARD OF OUTBOARD EDGE OF FRAME.
4. LOWER SPARE TIRE AND CUT OFF CARRIER ALONG LINE MARKED.
5. POSITION RECEIVER ON FRAME AND LOOSELY REINSTALL BUMPER BRACKETS USING (3) M12 BOLTS AND FASTENERS PER SIDE. RECEIVER BRACKETS ARE SANDWICHED BETWEEN BUMPER BRACKETS AND FRAME.
6. **PRE-1994 MODELS:** REINSTALL BUMPER ON BUMPER BRACKETS WITH ORIGINAL BOLTS, USING THREE (3) 1/2" WASHERS AT EACH BOLT LOCATION AS SPACERS BETWEEN BRACKETS AND BUMPER. SEE FIG. 1.
1994-PRESENT MODELS: REINSTALL BUMPER ON BUMPER BRACKETS WITH ORIGINAL BOLTS. SLOTS IN BUMPER BRACKET ALLOW FOR ADJUSTMENT.
7. RAISE SPARE TIRE BACK INTO POSITION AND SECURE. RECONNECT BUMPER WIRING.
VEHICLES WITHOUT BUMPERS: SUBSTITUTE (6) 1/2" CONICAL WASHERS FOR LOCK WASHERS USED WITH THE M12 BOLTS. THE CONICAL WASHERS ARE NOT PROVIDED.
 TIGHTEN ALL FASTENERS TO 75 LB.-FT.



USE ONLY THE DRAWBAR SHOWN FOR CORRECT BUMPER CLEARANCE AND HEIGHT.
 DRAWBAR MUST BE USED IN THE DROP POSITION ONLY.

THIS PRODUCT COMPLIES WITH SAFETY SPECIFICATIONS AND REQUIREMENTS FOR CONNECTING DEVICES AND TOWING SYSTEMS OF THE STATE OF NEW YORK, V.E.S.C. REGULATION V-5 AND SAE J684.

APPROX WEIGHT (LB.)	FASTENER KIT
25.25	F36248

NOTE: Check hitch frequently, making sure all fasteners and ball are properly tightened. If hitch is removed, plug all holes in trunk pan or other body panels to prevent entry of water and exhaust fumes. A hitch or ball which has been damaged should be removed and replaced. Observe safety precautions when working beneath a vehicle and wear eye protection. Follow car maker's specs for maximum trailer weight and tongue weight. Do not cut access or attachment holes with a torch.

TOWING PRODUCTS
 Plymouth, Michigan