



SpeedVault
Model SV 500
User Manual



Patented

Rev 1 (10/11)

Firearm Safety

WARNING: The SpeedVault safe or any other firearm storage device cannot take the place of other safety procedures including advising children of the dangers of firearms.

WARNING: The manufacturers and distributors of the SpeedVault safe do not recommend, suggest, advise, promote or otherwise condone the ownership or use of firearms. We at GunVault Inc. believe the decision to own or use a firearm is a serious decision that should only be made by an adult who has carefully considered the risks and benefits of such a decision.

WARNING: The keypad and push buttons on the control panel are electronic. They have a certain feel to them and may seem different to different people. It is important for you to become accustomed through practice, as to how the SpeedVault safe responds to your own personal touch.

WARNING: Never mix alcohol or drugs with firearms or the SpeedVault safe. Alcohol and other substances likely to impair normal mental or physical functions should not be used before shooting or handling firearms or the SpeedVault safe.

WARNING: Never grab your firearm by the trigger when removing or placing into the SpeedVault safe. Make sure your firearm's safety mechanism is on.

WARNING: Always point your firearm in a safe direction. Common sense should dictate which direction is the safest.

WARNING: Always follow the firearm safety rules set out by the firearm's manufacturer.

WARNING: Be familiar with how firearms work. GunVault recommends that you obtain as much information as possible on firearm safety.

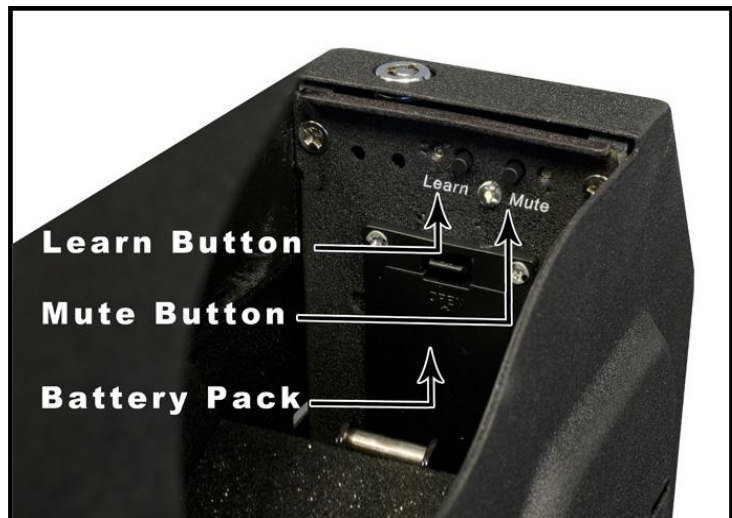
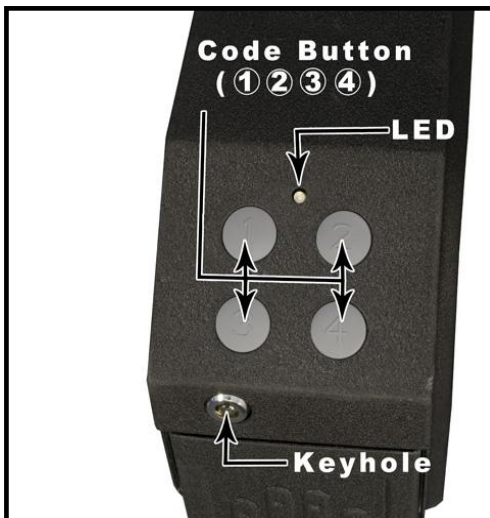
WARNING: Always handle firearms as if they are loaded and ready to fire. Always assume that a firearm is loaded.

WARNING: In order to enjoy the maximum security benefits of the SpeedVault safe product, it must be mounted in place using the equipment provided with the product, according to the instructions provided herein. Use of this product as a storage receptacle without mounting according to the instructions provided herein, may compromise security of the SpeedVault.

Getting Started

Set your keys to the side. Don't lock them inside the safe!

- Pull open the battery cover.
- Pull out the battery holder.
- Insert new 9v battery. Following the Positive (+) and Negative (-) guides on the holder.
- When power has been connected, the green light blinks one time and then the red light blinks one time, with a long beep during the process.
- Use the factory-default code to open the unit, which is: Press each button one time, from left to right -- 1 , 2 , 3 , 4.
- Getting ready to program
- Find the LED light in the keypad.
- It can glow either green or red. Depending upon the function being utilized.
- There is an audible beep when keys are pressed.



Choosing Your Own Access Code

- An access code is a series of entries on the keypad.
WARNING: This is not a numeric keypad, you cannot program digits (there is no 5, 6, 7, 8, 9, or 10).
- An “entry” is a single press of one or more buttons at the same time.
- The user can use a minimum of three entries, or a maximum of six entries, for access code.
- For each entry of the access code, the user may choose one, more than one or **ALL** of the buttons on the keypad in combination.
- Example of a valid access code: press button one, press button two, press all four buttons together.

Programming Your Access Code

- First, press and hold the Learn Button for two seconds, the green light blinks and there will be a beep. The unit is now in “Learn” mode.
- Enter new code in 13 seconds. The light will remain green.
- Press and hold the Learn Button again for two seconds. The light will turn red, and you will hear a beep. Release the Learn Button.
- While the light is red, enter your new code a second time to confirm it.
- Press and hold the Learn Button a third time for two seconds. The light will blink green five times. And you will hear five beeps, confirming that the new code has been accepted. If the red light blinks five times with five soft beeps at this point, an error has occurred. Just start over by pressing the Learn Button for two seconds.

Mute Button

Find the Mute button beside the learn button, press the Mute button for two seconds to turn the keypad input tone (beeps) on or off.

Tamper Detect Feature

Entering an invalid access code sets the Tamper Indicator.

Hold down buttons two “2” and three “3” for five seconds to activate the Tamper Indicator.

- If tampering has been detected, the red light will glow until buttons two “2” and three “3” are released.
- If tampering hasn’t been detected, the green light will glow until buttons two and three are released.

Security Sleep Mode

The SpeedVault has a Security Sleep Mode. 24 incorrect entries on the keypad triggers “Security Sleep Mode”. Sleep Mode lasts for two minutes. During Sleep Mode the keypad does not accept any entries. If a button is pressed during Sleep Mode, the LED blinks red and the alarm beeps three times.

Low Battery Warning Indicator

- The low -battery warning indication is seven red flashes and seven soft beeps when the keypad is operated.

Replacing the Battery

- Pull open the battery cover.
- Pull out the battery holder.
 - a) Remove old 9v battery.
 - b) Insert new 9v battery. Following the Positive (+) and Negative (-) guides on the holder.
- Reinsert the battery holder and snap the battery cover back into place.
- The user code will not be erased or lost when changing the batteries.

Mounting Bracket Installation

Tools Required:

- Phillips-Head Screw Driver

Optional Tools:

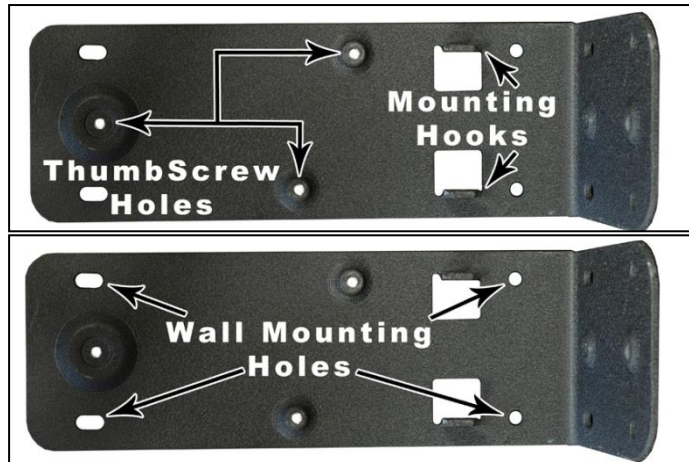
- Power Drill
- Phillips-Head Bit

Supplied Parts:

- SpeedVault Safe x 1
- Mounting Bracket x 1
- Wood Screws x 4*
- Thumbscrew(s) x 5

* Mounting screws provided are for solid wood surface only. If mounting to another surface type, drywall, cement, and etc, the appropriate hardware can be purchased through a local hardware store.

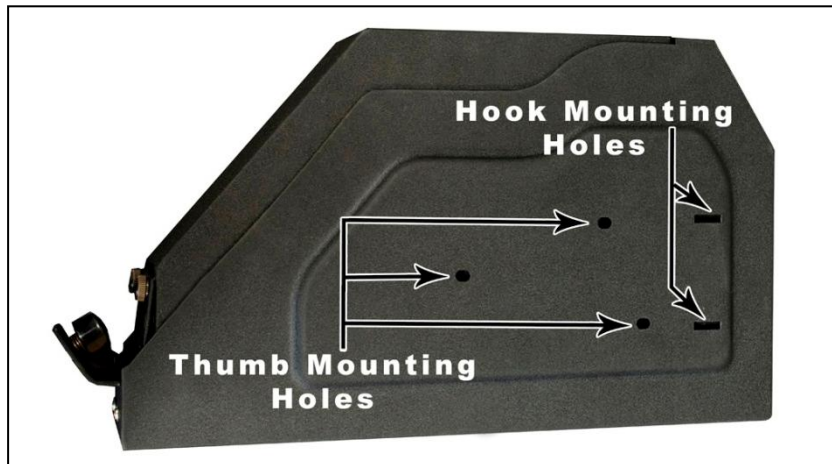
Mounting Bracket Images:



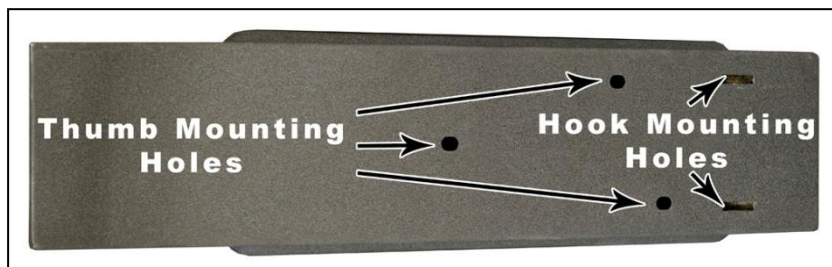
Mounting Positions:

The SpeedVault can be mounted from the left, right, or back using the provided bracket holes (see images below).

Left or Right Side View:



Back Side View:



Installing the SpeedVault:

IMPORTANT: When mounting the SpeedVault make sure the drawer has enough space to drop open. The drawer requires gravity to fully release, always install in a vertical position (see image below)



1. Secure the “**Mounting Bracket**” to the desired location using the “**Wall Mounting Holes**” on the bracket and the provided wood screws.

IMPORTANT: Mounting screws provided are for solid wood surface only. If mounting to another surface type, drywall, cement, and etc, the appropriate hardware can be purchased through a local hardware store.

2. Remove the two “**Thumbscrews**” located on the bottom of the SpeedVault (see image below).



3. After removing the two “**Thumbscrews**”, open the SpeedVault using the supplied keys. This will allow the drawer to be removed by lifting it up and out.
4. With the drawer removed, the SpeedVault can now be mounted to the bracket. Insert the “**Mounting Hooks**” into the “**Hook Mounting Holes**” located on the left, right, or back of the SpeedVault. Now that the SpeedVault is mounted to the bracket, it can be secured to the bracket by using the supplied “**Thumbscrews**”.
5. Locate the three “**Thumb Mounting Holes**” beneath the “**Mounting Hooks**” inside the safe. They will be on the same side as the “**Mounting Bracket**”.

6. Insert the **“Thumbscrew”** into the **“Thumb Mounting Hole”** and turn clockwise until tight. Repeat for the other two **“Thumbscrews”**. The SpeedVault is now securely mounted.
7. Reinstall the drawer and the two **“Thumbscrews”**.
8. The SpeedVault is now ready to be used.

Technical Support

If you have followed the above steps carefully and still have a problem operating your GunVault, phone GunVault Technical Support. Almost all problems can be solved within minutes over the telephone.

800-222-1055

Requirements for Return & Repair

If possible, do not return your GunVault safe to your dealer. Instead, call GunVault Technical Support, most problems can be solved over the telephone, making return unnecessary. GunVault products delivered without a pre-arranged Return Authorization Number may be returned unopened, at owner expense, and fees may accrue.

Limited Warranty

1. GunVault (the "Company") warrants to the original consumer (the "Purchaser") of any GunVault safe (the "GunVault safe") purchased after January 1, 2014 against any damage caused by fire, burglary or attempted burglary for a period of five (5) years from the date of purchase.
2. The Company warrants to the purchaser that the GunVault safe will be free from defects in workmanship and materials for a period of one (1) year from the date of purchase.
3. These warranties are not assignable or transferable to any other person.
4. Any damage to the GunVault safe as a result of misuse, tampering, abuse, neglect, accident, improper installation, modification, unauthorized service, destruction, or the alteration of the serial number, or use violate of the instructions furnished by the Company will void this warranty.
5. The sole responsibility of the Company shall be limited to the repair or replacement (in its sole discretion) of any component of the GunVault safe which fails to conform to this warranty at no cost to the purchaser for the period of the warranty.
6. Contact the Company directly to obtain service under this warranty. If it becomes applicable to send a defective product to the Company, a Return Authorization Number must first be obtained from the company. In order to obtain service under this warranty, purchaser must provide the Company with the following items (a) proof of purchase, (b) police or fire department report, (c) photographs of damaged sad, and (d) written testimonial.
7. Products shipped without prior Return Authorization and Return Authorization Number may not be accepted, and the Company will not be responsible for their disposition and/or cost of return to the owner.
8. The Company will not assume any responsibility for any loss or damage incurred in shipping. All return authorized products should include a copy of the original invoice in order that this warranty may be honored.
9. This warranty is not an insurance policy. The Company is not responsible for any manner of damage to or theft of the Purchaser's GunVault safe or its contents.
10. We recommend that the enclosed warranty cared be completed in full, and returned to the Company within ten (10) days of the original date of purchase to validate this warranty.
11. Any implied warranties that the purchaser may have are limited to the duration of the warranties described above. There are no further warranties that extend or apply beyond the face hereof, and the company expressly disclaims and excludes any and all warranties of merchant ability or fitness for a particular purpose. Some states do not allow limitations on how long an implied warranty lasts, so the above limitation may not apply to you.
12. Repair or replacement shall be the sole remedy for the purchaser under this warranty. The company shall not be liable for any direct, indirect, incidental or consequential damages, losses or expense arising from the use or misuse of the GunVault safe. Some states do not allow the exclusion or limitations of incidental or consequential damages, so the limitation may not apply to you.
13. This warranty gives you specific legal rights, and you may also have other rights which vary from state to state.

Notes:

Inquiries or questions regarding the SpeedVault should be directed to:

GunVault, Inc.
Technical Support 800-222-1055

Protected by United States Patent Numbers
5,161,396 and 5,549,337