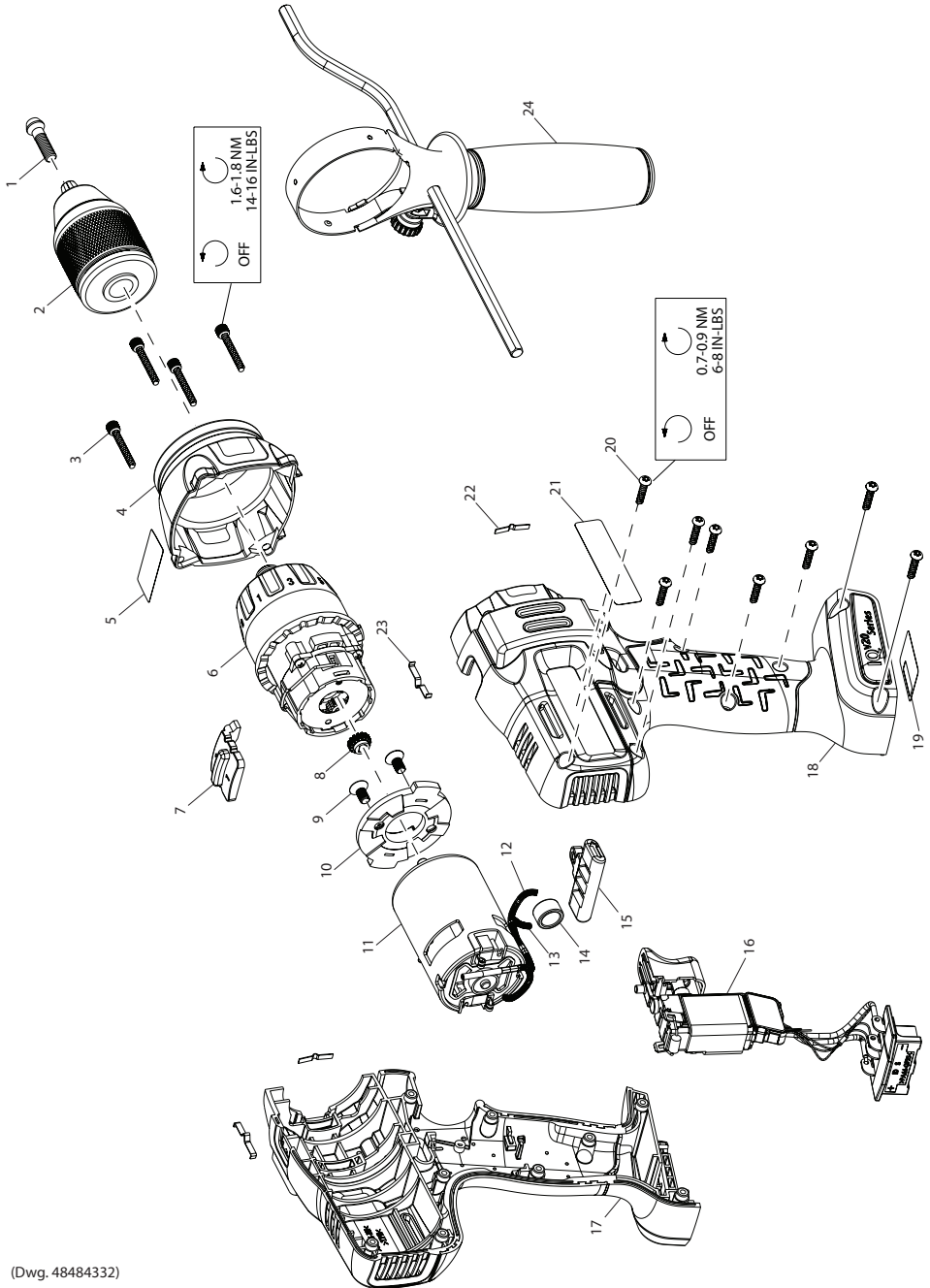


D5000 Series Cordless Drill/Driver- Exploded View



(Dwg. 48484332)



www.ingersollrandproducts.com
© 2012 Ingersoll-Rand, Plc

48489603
Edition 1
September 2012

D5000 Series Cordless Drill/Driver - Parts List

Item	Part Description	Part Number	Item	Part Description	Part Number
*	Chuck Kit	D550-K255	*	Housing Kit	D5140-K40
1	Screw, Chuck	--	17	Left Housing	--
2	Chuck	--	18	Right Housing	--
*	Torque Selector Cover Kit	D5140-K144	19	Series Number Label	--
3	Screw, Torque Selector Cover (4 Required)	--	20	Screw, Housing (9 Required)	--
4	Torque Selector Cover	--	21	Info Label	--
5	Warning Label	--	22	Torque Detents (2 Required)	--
6	Gear Box Assembly	D5140-K750	23	Speed Detents (2 Required)	--
7	High/Low Speed Switch	--	*	Fastener Kit	D5140-K105
*	Electric Motor Kit	D5140-K54	3	Screw, Torque Selector Cover (4 Required)	--
8	Pinion	--	20	Screw, Housing (9 Required)	--
9	Motor Mount Screw (2 Required)	--	*	Label Kit	D5140-K99
10	Motor Mount Plate	--	5	Warning Label	--
11	Motor	--	19	Series Number Label	--
12	Wire, Positive, Motor	--	21	Info Label	--
13	Wire, Negative, Motor	--	24	Auxiliary Handle Assembly	D5000- A48
14	Ferrite	--	*25	20V Li-ion Battery Pack	BL2010
15	Forward/Reverse Actuator Kit	W7150-75	*26	Carrying Case	D5000-Case
16	Switch Kit	D5140-K93			

* Not illustrated

Parts and Maintenance

When the life of the tool has expired, it is recommended that the tool be disassembled, degreased and parts be separated by material so that they can be recycled.

Tool repair and maintenance should only be carried out by an authorized Service Center.

Refer all communications to the nearest **Ingersoll Rand** Office or Distributor.

Related Documentation

For additional information refer to:

Cordless Drill/Driver Product Safety Information Manual 04581153.

Cordless Drill/Driver Product Information Manual 48489595.

Manuals can be downloaded from www.ingersollrandproducts.com.