

TROUBLESHOOTING

Always release the pressure from your sprayer, remove all chemicals and clean the sprayer before making repairs. If you have questions, please call our consumer hotline at **1-888-376-9601**.

Problem: Pump is hard to pump or does not pressurize.

Cause: Pump O-ring is either not lubricated or broken.

Solution: Apply petroleum jelly or grease around the outside of the pump O-ring. Check for cracks or other damage.

Problem: Bad spray pattern or low spray volume.

Cause: Nozzle is clogged or pressure is low in sprayer.

Solution: Remove nozzle and clean.

WARNINGS

Before using or filling read all parts of the operating instructions.

Wear protective clothing, respirator, gloves and eye protection when using, filling or operating the sprayer.

Never fill sprayer with hot liquids, MAX. 85°F.

This sprayer is made to be used with agrichemicals; do not use with flammable, corrosive or caustic solutions (for example: bleach, diesel fuel or acids).

Do not store the sprayer in the reach of children.

LIMITED 1 YEAR WARRANTY

Manufacturer warranty to the original purchaser that this sprayer will continue to function as intended if used in accordance with the instructions under normal consumer use for a period of one year. If the product fails to function as intended, please do not return it to the store; call our consumer hotline at **1-888-376-9601**. This warranty does not Apply to damage resulting from accident, misuse, neglect, alterations, operation not in accordance with instructions, commercial use, or normal wear and tear of O-ring or seals.

Distributed by:
TRACTOR SUPPLY COMPANY
200 POWELL PLACE
BRENTWOOD, TN 37027
For customer support,
call: 1-888-376-9601
www.TractorSupply.com
MADE IN CHINA



PRO SERIES 4 Gallon

BACKPACK PUMP SPRAYER

INSTRUCTION MANUAL

1059000



As the new owner of the 4-Gallon (15.1 Liter) backpack sprayer, we strongly recommend that you carefully read and follow all the information on this sheet before use.

HOW TO ASSEMBLE

Attaching wand to flow control

1. Push the wand through the wand nut and into the wand handle until it stops. (Figure A)
2. Turn the nut clockwise to tighten.

Hose connection to the pump

(This may be factory installed for you)

1. Insert the hose into the pump.
2. Turn the nut clockwise and firmly tighten.

Backpack straps

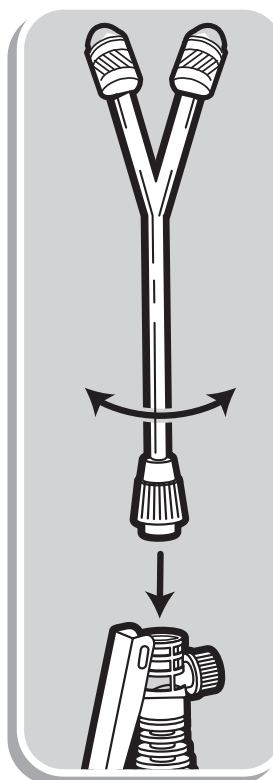
1. This comfortable backpack is pre-assembled already.
2. Adjust the shoulder and waist strap length to desired fit before filling the sprayer.

NOTE: To make sure your sprayer is working properly, test sprayer with water before using.

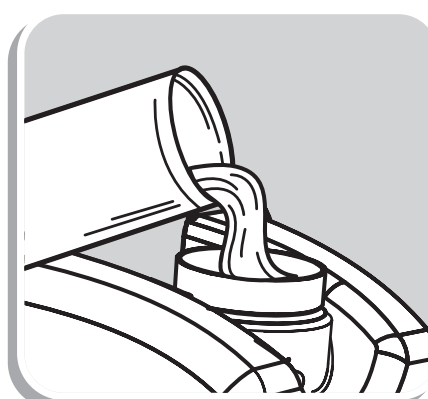
OPERATING INSTRUCTIONS

Filling the sprayer

1. Remove lid.
2. Following the instructions on the chemical manufacturer's label, mix the chemicals to be used and pour into the sprayer tank. Never exceed the "MAX FILL LINE". (Figure B)
3. Replace lid; secure firmly.



(Figure A)



(Figure B)

Pressurizing the sprayer

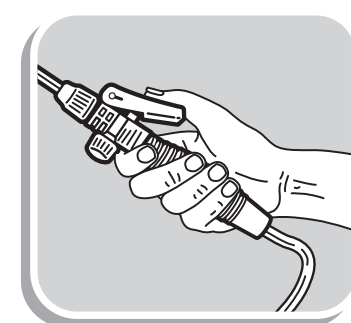
1. Pump the pump handle quickly; when you feel resistance you know the pump chamber is filling with fluid.
2. Pump the sprayer as needed 5-6 times.

Spraying

1. 4 different type of nozzle:
 - Cone nozzle sprays on target to reduce waste
 - Long-reach adjustable nozzle for spraying high places
 - Fan nozzle for spray at flat surfaces
 - Dual cone nozzle for quicker coverage of large areas
2. Squeeze the wand handle to begin spraying. (Figure C)
3. For continuous spraying, press the small round switch on the wand handle into the lock position. (Figure D)
4. To stop spraying, release the flow control on the wand handle.
Warning: Never leave pressurized sprayer unattended.



(Figure C)



(Figure D)

CLEANING AND STORAGE

1. Do not store chemicals in the tank; they can clog the system as they dry and destroy the seals.
2. To extend the life of your sprayer, clean the sprayer after each use. Rinse thoroughly with mild soap and water and repeat with clean water.
3. Store your sprayer in a clean, dry area.
4. To extend the life of your seals, lubricate with petroleum jelly.

	ITEM NUMBER:	1059000
	DESCRIPTION:	4 Gallon Backpack Pump Sprayer
	INSTRUCTION MANUAL SIZE:	297mm(W) x 210mm(H)
	COLOR:	1C + 1C
	MATERIAL:	80gsm Woodfree Paper (80磅書紙)
	FINISHING:	---
	DATE:	Nov 20, 2013
	VERSION:	1.3
	RELEASED DATE:	Dec 04, 2013
	CMYK	<input type="checkbox"/> <input type="checkbox"/> <input type="checkbox"/> <input type="checkbox"/>
PANTONE	<input type="checkbox"/> --- <input type="checkbox"/> ---	
	<input type="checkbox"/> --- <input type="checkbox"/> ---	