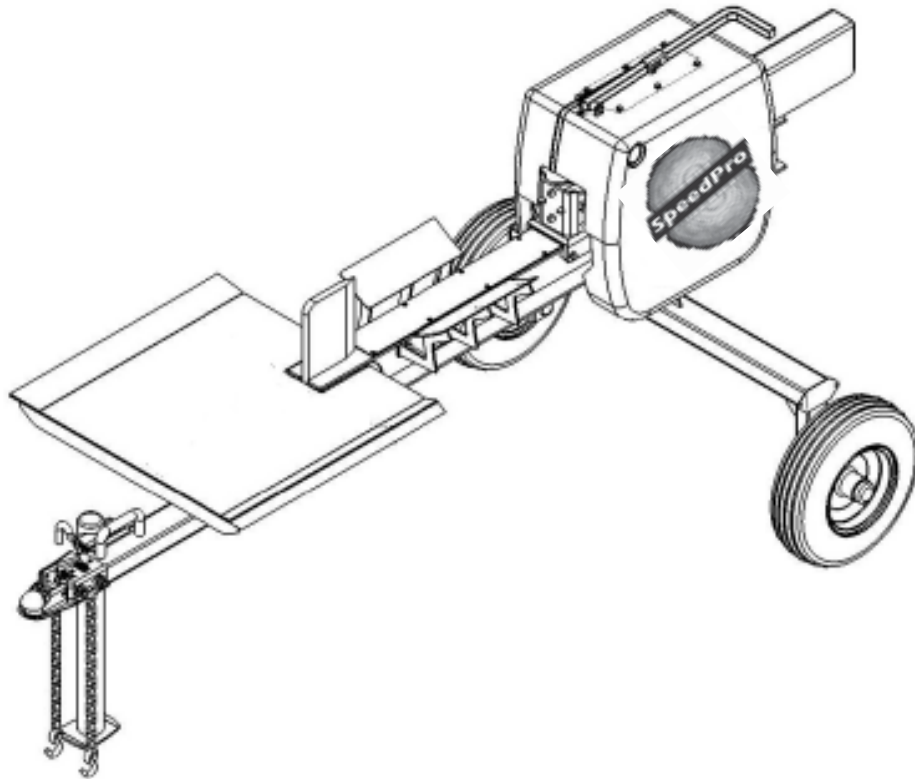




MECHANICAL LOG SPLITTER



MODEL NO. 1022655 (S40170100)



Owner's Manual

ASSEMBLY & OPERATING INSTRUCTIONS



WARNING: All operators must read this manual before operating this log splitter. Follow the safety instructions in the manual and in decals attached to the product. Failure to do so could result in serious injury or death.

Table of Contents

	Page(s)
Important Safety Information.....	1-6
Intended Use	1
Personal Protective Equipment	1
Safety Decals	1-2
General Safety	3
Preparation of the Log	3
Work Area	3
Operation of the Log Splitter	4
Repair and Maintenance Safety	5
Fire Prevention	5
Towing Safety	6
Assembly Instructions	7-12
Operating Instructions	13-14
Operation	13
Towing	14
Maintenance	14
Warranty	14
Replacement Parts	15-16
Specifications	Back Cover



IMPORTANT SAFETY INFORMATION



WARNING: Read and thoroughly understand all instructions and safety information before assembling or operating this log splitter. Failure to do so may cause serious injury or death. Do not allow anyone to operate this log splitter who has not read this manual. As with all power equipment, a log splitter can be dangerous if assembled or used improperly. Do not operate this log splitter if you have doubts or questions concerning safe operation. Call our customer service department at 1-800-525-8322 to address these concerns.

Si no entiende ingles, se prefiere que busque alguien que interprete las instrucciones para usted.

INTENDED USE

NEVER use this log splitter for any other purposes than splitting wood. It is designed for this use **only**. Any other use can cause serious injury or death.

PERSONAL PROTECTIVE EQUIPMENT



BEFORE operating this log splitter make sure that you wear safety gear such as goggles or safety glasses, steel toed shoes and tight fitting gloves (without loose cuffs or draw strings). Always wear a protective hearing device when operating this log splitter.

NEVER wear loose clothing or jewelry that can be caught by moving parts of the log splitter. Keep clothing and hair away from all moving parts when operating this log splitter.

SAFETY DECALS

Make sure that all safety warning decals are in good condition and readable. Always replace missing or defaced decals. Contact SpeeCo at 1-800-525-8322 for replacement decals.

<p>WARNING</p> <p>To minimize the risk of serious injury or death: Read and thoroughly understand owner's manual and engine manual before assembly, operation, loading and maintenance. Do not operate if alcohol is mixing, drugged, or someone. Only one operator permitted. Must operate in operator safe zone. Keep all bystanders and pets away. Do not step or reach over splitter during operation. Hold legs by the sides, never by ends. Keep hands, body and clothing away from moving parts when splitting. Do not operate indoors. Wear safety glasses, shoes and hearing devices. Do not operate if tired or under influence of alcohol or drugs.</p> <p>For Responsive Service or if Manual is Missing Call 1-800-525-8322 or visit www.speeeco.com</p>	<p>ADVERTENCIA</p> <p>Para minimizar el riesgo de lesiones serias o la muerte: Lea y entienda completamente el manual del usuario y el manual del motor antes de proceder a las operaciones de montaje, operación, carga y mantenimiento. No opere si falta la tapa o la misma está dañada o ha sido retirada, de garantía sólo un operador por vez, que debe operar en la zona segura para el operador. Todos los transeúntes y mascotas deben mantenerse alejados. No se pare ni pase sobre los cortadores de troncos durante la operación. Sostenga las troncos por los costados, nunca por los extremos, manténgalos alejados del cuerpo y la ropa alejados de las partes en movimiento durante la operación. No opere en interiores. Use siempre equipo de seguridad y evite estar bajo la influencia del alcohol o las drogas.</p> <p>Para solicitar servicio o si falta el manual, llame al 1-800-525-8322 o visite www.speeeco.com</p>	<p>AVERTISSEMENT</p> <p>Pour minimiser les risques de blessures graves ou mortelles: Lire et bien comprendre le manuel de propriétaire et le manuel du moteur avant tout assemblage fonctionnement, rangement et entretien. Ne pas utiliser la machine si le toit de protection est manquant, endommagé ou retiré. Un seul opérateur est autorisé. Seul fonctionner dans une zone sécuritaire pour l'opérateur. Tenir tous les spectateurs et animaux à l'écart. Ne pas marcher ou passer par-dessus la rampeuse pendant le fonctionnement. Tenir les troncs par les côtés, jamais par les extrémités. Tenir les mains, le corps et les vêtements éloignés des pièces mobiles lors de l'usage. Ne pas faire fonctionner à l'intérieur. Porter des lunettes et souliers de sécurité ainsi qu'un dispositif de protection auditive. Ne pas faire fonctionner si vos facultés sont affaiblies par l'alcool ou des drogues.</p> <p>Pour un service attentif ou si vous n'avez pas de manuel, contactez le 1-800-525-8322 ou visitez le www.speeeco.com</p>	<p>OPERATING INSTRUCTIONS</p> <ol style="list-style-type: none"> Place splitter on dry, level surface. Remove debris. Start engine. Advance throttle to red. Place log onto beam, against cutting wedge. Split wood in direction of grain. Engage safety button and push down the control handle to activate ram. <p>INSTRUCCIONES DE OPERACIÓN</p> <ol style="list-style-type: none"> Coloque la tronquera sobre una superficie seca y nivelada. Quite toda la suciedad que haya sobre la superficie. Arranque el motor. Lleve el acelerador a la posición máxima. Coloque el tronco sobre el brazo, contra el pedruzco. Corte la madera en la dirección de la veta. Conectar el botón de seguridad y bajar la manivela de control para activar el pistón. <p>DIRECTIVES DE FONCTIONNEMENT</p> <ol style="list-style-type: none"> Placer la troncheuse sur une surface sèche et nivelée. Enlever les débris. Démarrer le moteur. Avancer la manivèle de pression au maximum. Placer le bois sur la palette, contre la palette d'appui-pied. Fendre le bois dans le sens de grain. Appuyer sur le bouton de sécurité et pousser la poignée de commande vers le bas pour activer le piston.
---	--	--	--

PART NUMBER: S52068000
LOCATION: TOP OF SHROUD, OPERATOR'S SIDE



IMPORTANT SAFETY INFORMATION

⚠ WARNING

To minimize risk of serious injury or death to you or others when towing log splitter:

- Read manual for how to properly attach coupler to hitch ball and how to safety tie.
- Use correct ball size.
- Do not exceed weight capacity of ball or load limits of coupler.
- Always use safety chains.
- Never exceed 45 mph.
- Avoid sharp turns and steep angles.
- Confirm coupler tightness each time before towing and after towing 50 miles.
- Fasten ball or coupler if damaged.

⚠ ADVERTENCIA

Para minimizar el riesgo de lesiones, serias o la muerte a usted o a terceros mientras remolca una cortadora de troncos:

- Lea el manual para saber cómo adherir el acople a la esfera del enganche y cómo conectar en forma segura.
- Use el tamaño de esfera correcto.
- No exceda la capacidad de peso de la esfera ni los límites de carga del acople.
- Siempre use cadenas de seguridad.
- Nunca exceda los 45 mph.
- Evite los giros bruscos y los ángulos resacaes.
- Revise la firmeza de la conexión cada vez antes de remolcar y después de remolcar una distancia de 50 millas.
- Fijación la bola o el acople si están dañados.

⚠ AVERTISSEMENT

Pour minimiser les risques de blessures graves ou mortelles pour vous et pour les autres pendant le remorquage de la tronçonneuse à chaîne :

- Lire le manuel pour savoir comment accocher correctement le coupler à la boule d'attelage et comment de manière sécuritaire.
- Utiliser une boule de la bonne grosseur.
- Ne pas dépasser la capacité maximale de la boule ni les limites de charge du coupler.
- Toujours utiliser des chaînes de sécurité.
- Ne jamais dépasser une vitesse de 45 mph.
- Éviter les virages serrés et les angles d'approche accidentés.
- S'assurer du serrage du coupler à chaque fois, avant et après un remorquage sur 50 miles.
- Rerattacher le coupler ou la boule d'attelage s'ils sont endommagés.

PART NUMBER: S52068100
LOCATION: FRONT OF TONGUE

⚠ DANGER

TOP VIEW

TO PREVENT SERIOUS INJURY OR DEATH, ALWAYS OPERATE THIS LOG SPLITTER FROM THE OPERATOR ZONE SHOWN ABOVE.

⚠ PELIGRO

PARA EVITAR LESIONES GRAVES O LA MUERTE, SIEMPRE OPERE ESTA CORTADORA DE TRONCOS TOMÁNDOLA POR LA ZONA DE OPERACIÓN COMO SE MUESTRA ARRIBA.

⚠ DANGER

POUR PRÉVENIR DES BLESSURES GRAVES DE MORTelles, UTILISEZ TOUJOURS CE PRINCEPS DE BûCHES DEPUIS LA ZONE DE L'OPÉRATEUR ILLUSTRÉE CI-DESSUS.

PART NUMBER: S53018600
LOCATION: TOP OF SHROUD, ENGINE SIDE

⚠ DANGER

Crush Hazard
Keep hands clear when cutting wedge is moving.

⚠ PELIGRO

Riesgo de aplastamiento
Mantenga las manos alejadas cuando la cuña de corte está en movimiento.

⚠ DANGER

Danger d'écrasement
Tenir les mains éloignées lorsque le bord tranchant est en mouvement.

PART NUMBER: S52068200
LOCATION: SHROUD FRONT ABOVE PUSH RAM

⚠ DANGER

To prevent serious injury or death from moving parts:

- Keep hands clear from rotating parts while machine is operating.
- Do not operate without guards or shields in place.

⚠ PELIGRO

Para evitar lesiones graves o la muerte debido a piezas móviles:

- Mantenga las manos alejadas de las piezas rotativas mientras opera la máquina.
- No opere la máquina si los dispositivos de seguridad o los protectores no están en su lugar.

⚠ DANGER

Pour prévenir des blessures graves ou mortelles causées par les pièces mobiles:

- Gardez les mains à l'écart des pièces mobiles lorsque la machine est en marche.
- N'utilisez pas la machine sans les carters ou dispositifs de protection en place.

PART NUMBER: S53018500
LOCATION: BACK OF SHROUD
ENGINE SIDE AND ENGINE PLATE

⚠ WARNING

- ALWAYS USE TWO HANDS TO OPERATE THIS MACHINE.
- DO NOT TAMPER WITH SAFETY BUTTON.
- DO NOT USE THIS MACHINE IF THE SAFETY BUTTON IS MISSING, BROKEN OR ALTERED.

⚠ ADVERTENCIA

- USE SIEMPRE LAS DOS MANOS PARA OPERAR ESTA MÁQUINA.
- NO INTENTE FORZAR EL BOTÓN DE SEGURIDAD.
- NO USE ESTA MÁQUINA SI FALTA EL BOTÓN DE SEGURIDAD O EL MISMO ESTÁ ROTO O HA SIDO ALTERADO.

⚠ AVERTISSEMENT

- TOUJOURS SE SERVIR DES DEUX MAINS POUR UTILISER CETTE MACHINE.
- NE PAS ALTERER LE BOUTON DE SÉCURITÉ.
- NE PAS UTILISER SI LA BOUTON DE SÉCURITÉ EST MANQUANT, BRISÉ OU ALTERÉ.

PART NUMBER: S52067900
LOCATION: NEXT TO SAFETY BUTTON
ON OPERATOR'S SIDE OF SHROUD



PART NUMBER: S53018700
LOCATION: RIGHT OF SAFETY BUTTON
ON OPERATOR'S SIDE OF SHROUD



IMPORTANT SAFETY INFORMATION

GENERAL SAFETY



Failure to follow these instructions may result in serious injury or death.

ALWAYS keep the operator's manual nearby for reference. Reread the manual periodically.

ALWAYS establish a safety zone restricting bystanders to a 10 foot radius around the log splitter when log splitter is in operation.

ALWAYS ensure that all operators are properly trained or have read and understood the operator's manual.

ALWAYS operate the log splitter with a clear mind, free of the influence of alcohol drugs or medication.

ALWAYS wear close fitted clothing , free from lanyards, strings or jewelry which could be an entrapment hazard.

ALWAYS keep clothing and hair away from moving parts.

ALWAYS keep safety shields and the shrouds in place during operation

WORK AREA

ALWAYS operate this log splitter on firm ground/earth.

ALWAYS wear proper footwear with adequate traction.

ALWAYS operate your log splitter in an open area. (Exhaust fumes contain carbon monoxide which can be deadly when inhaled.)

ALWAYS operate your log splitter on level ground. (Operating on a slope could cause the log splitter to roll over or logs to fall off.

ALWAYS operate your log splitter in daylight or under good artificial light.

ALWAYS keep the work area clean. Remove split wood around your log splitter immediately so that you don't stumble over it.

PREPARATION OF THE LOG

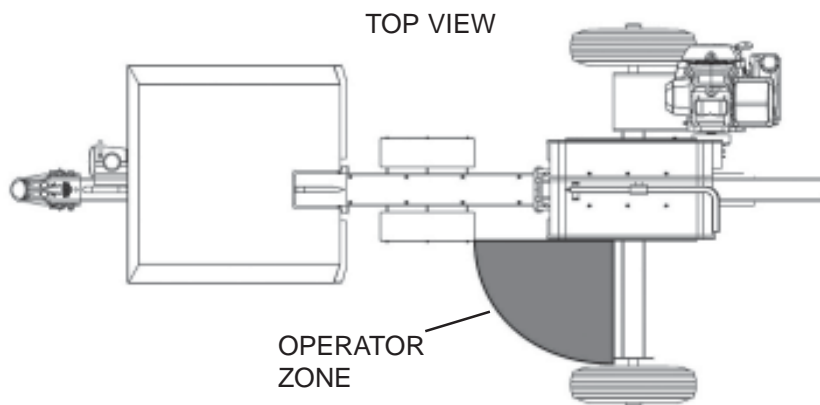
Both ends of the log should be cut as square as possible to help prevent the log from riding out of the splitter during operation. Do not split logs greater than 24 in. in length.



IMPORTANT SAFETY INFORMATION

OPERATION OF THE LOG SPLITTER

The log splitter is designed for a single operator, who stands in the “operator zone”, using the right hand to operate the control handle, and the left hand to press the Start button. Failure to operate the log splitter in this position can result in serious injury or death.



ALWAYS load the log onto the beam cradle up against the wedge.

ALWAYS be careful when moving or lifting the log splitter. Get assistance if it feels too heavy to move by yourself.

ALWAYS block the wheels to prevent movement of the log splitter while in operation.

NEVER place hands, body parts or clothing under the shrouds during operation. Moving parts could cause entanglement.

KNOW how to stop the log splitter and disengage the controls before operating it.

NEVER place hands or feet between the log and splitting wedge during forward or reverse stroke as this could result in serious injury or death.

NEVER straddle or step over the log splitter during operation.

NEVER reach or bend over the log splitter to pick up a log.

NEVER try to split two logs on top of each other.

NEVER try to cross split a log.

NEVER attempt to load your log splitter when the ram or wedge is in motion.

NEVER use your foot, a rope or any extension device to operate the controls. Only use both hands.

NEVER move the log splitter while the engine is running. Shut off the engine even if you are leaving the log splitter for a short period of time.

NEVER touch the muffler and other hot areas of the engine during operation. Wait until the engine cools down.



IMPORTANT SAFETY INFORMATION

GENERAL REPAIR

NEVER operate your log splitter when it is in poor mechanical condition or in need of repair.

Periodically check that all nuts, bolts, and screws are tight before operation. Check the condition of the drive belts periodically checking for wear.

NEVER modify your log splitter in any manner. Such alterations may cause your log splitter to be unsafe and will void the warranty.

NEVER tamper with the engine to run it at excessive speeds. The maximum engine speed is preset by the manufacturer and is within safety limits. See engine owner's manual.

ALWAYS perform all recommended maintenance procedures before using your log splitter.

ALWAYS replace all damaged or worn parts immediately.

ALWAYS remove the spark plug wire before performing any service or repair on your log splitter.

ALWAYS check the level of the engine oil before operation.

ALL replacement parts must meet manufacturer's specifications.

FIRE PREVENTION

NEVER operate your log splitter near a flame or spark.

NEVER fill the gas tank while the engine is hot or running. Allow the engine to cool before refueling.

NEVER smoke while operating or refueling your log splitter. Gas fumes can easily explode.

NEVER store gasoline in the house or near a heating appliance.

ONLY refuel your log splitter in a clear area with no gas fumes or spilled gas.

ALWAYS replace the gas cap securely.

If gasoline has spilled, move the log splitter away from the area of the spill and avoid creating any source of ignition until the spilled gas has evaporated.

ALWAYS take a Class B fire extinguisher with you when operating this log splitter in dry areas as a precautionary measure against possible flying sparks.

ALWAYS drain the fuel tank prior to storage to avoid the potential fire hazard.

ALWAYS store gasoline in an approved, tightly sealed container. Store the container in a cool, dry place.



IMPORTANT SAFETY INFORMATION

IMPORTANT NOTE: (spark arrester)

As a precautionary measure against possible flying sparks, always take a Class B fire extinguisher with you when operating this log splitter in dry areas. This log splitter is equipped with an internal combustion engine and should not be used on or near any unimproved forest-covered, brush-covered or grass-covered land unless the engine's exhaust system is equipped with a spark arrester meeting applicable local or state laws (if any). If a spark arrester is used, it should be maintained in effective working order by the operator. In the state of California, a spark arrester is required by law. Other states have similar laws. Federal laws apply on federal lands. A spark arrester muffler is optional and available as an accessory at your nearest engine dealer. Always check the legal requirements in your area.

TOWING SAFETY

ALWAYS check all local and state regulations regarding towing, licensing, and lights before towing your log splitter.

ALWAYS check before towing to make sure that the log splitter is correctly and securely attached to the towing vehicle and that the safety chains are secured to the hitch or bumper of the vehicle with enough slack to allow turning. Always use a Class I, 2" ball with this log splitter.

ALWAYS confirm coupler tightness each time before towing and after towing 50 miles.

ALWAYS disconnect your log splitter from the towing vehicle before operating it.

ALWAYS be careful when backing up with your log splitter in tow. It could jackknife.

ALWAYS allow for added length of your log splitter when turning, parking, crossing intersections and in all driving situations.

ALWAYS turn the fuel shut off valve on the engine to the "OFF" position before towing the log splitter. Failure to do so may result in flooding the engine.

ALWAYS use safety chains when towing your log splitter.

ALWAYS check ball coupler to see if it is damaged

NEVER exceed 45 mph when towing your log splitter. Towing the log splitter at speeds higher than 45 mph could result in loss of control, damage to the equipment, serious injury or death. Adjust towing speed for terrain and conditions. Be extra cautious when towing over rough terrain especially railroad crossings.

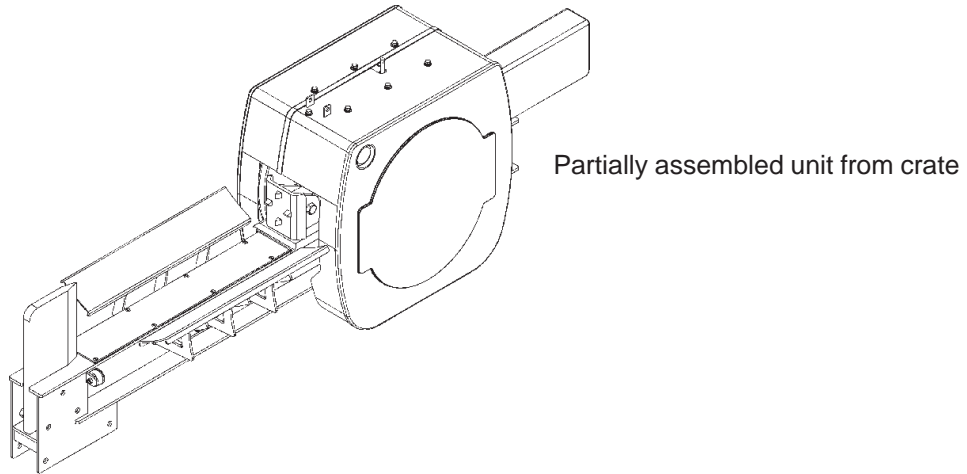
NEVER carry any cargo or wood on your log splitter.

NEVER allow anyone to sit or ride on your log splitter.

NEVER exceed weight capacity of ball or load limits of coupler.

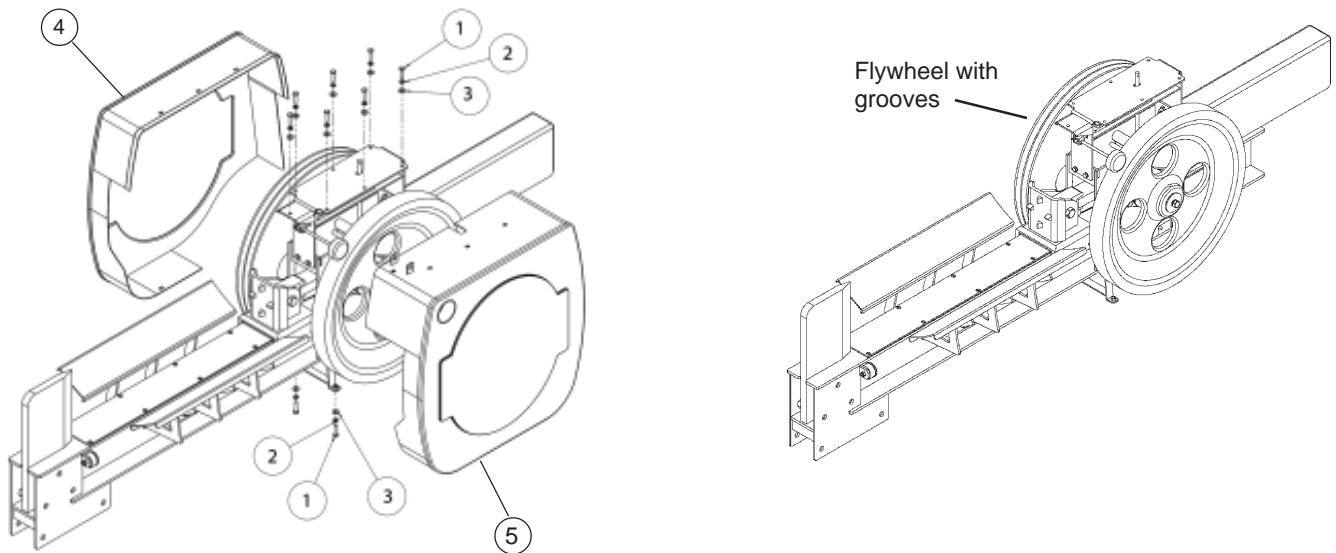
ASSEMBLY

NOTE: This product was partially assembled at the factory.



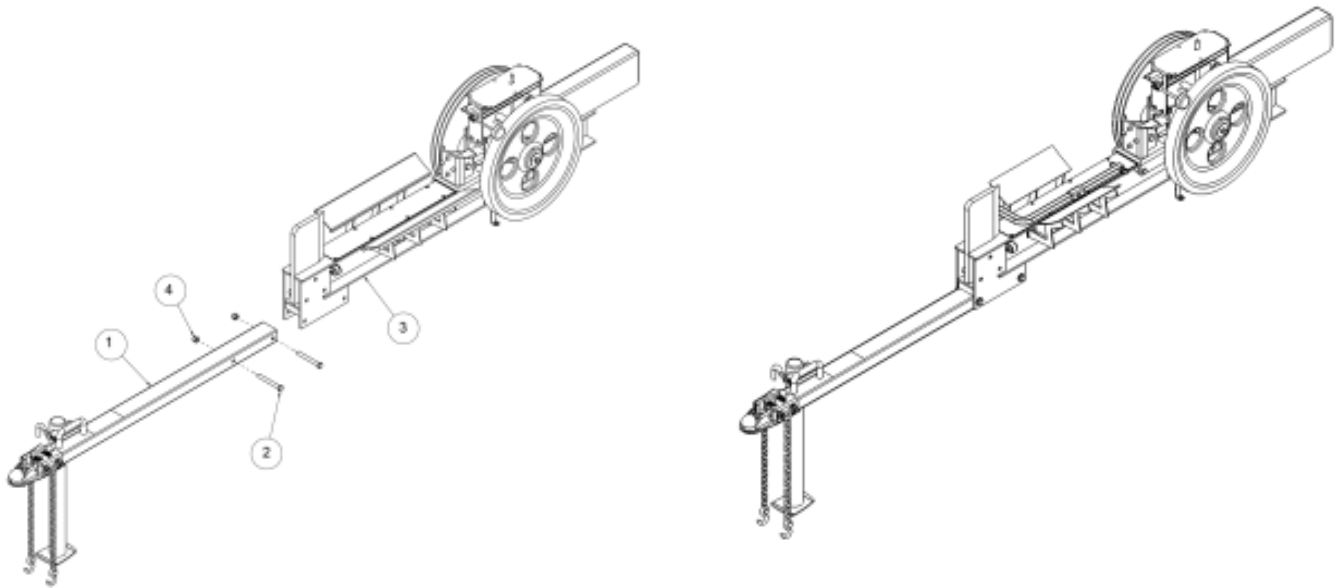
Step 1: Remove the partially assembled unit from the shipping crate. It may be necessary to break down the crate for easier removal. A forklift or additional help is recommended to safely remove the product from the crate. Remove the left shroud (4) and the right shroud (5) by loosening the 1/4" x 3/4" bolts (1), the 1/4" lock washers (2) and the 1/4" flat washers (3) as shown in the drawing below. For easier assembly place the rear end of the unit on blocks or something similar to keep it stable and level. Once the tongue assembly, axle assembly and wheels are attached the block can be removed. Set the two shroud pieces and the hardware aside for the moment. They will be installed in a later step.

NOTE: There is another method of assembly if the beam assembly is too heavy to move around. Both flywheels can be removed and put aside until later in the assembly process. The flywheels are held on a by a bolt on the end of the gear. The flywheel with the grooves has a **left hand thread** and the other has a standard bolt that is used as a set screw. Be extremely careful when removing flywheels. They are very **HEAVY**. Reattach the flywheels after step 4 once the tongue and wheels are attached.



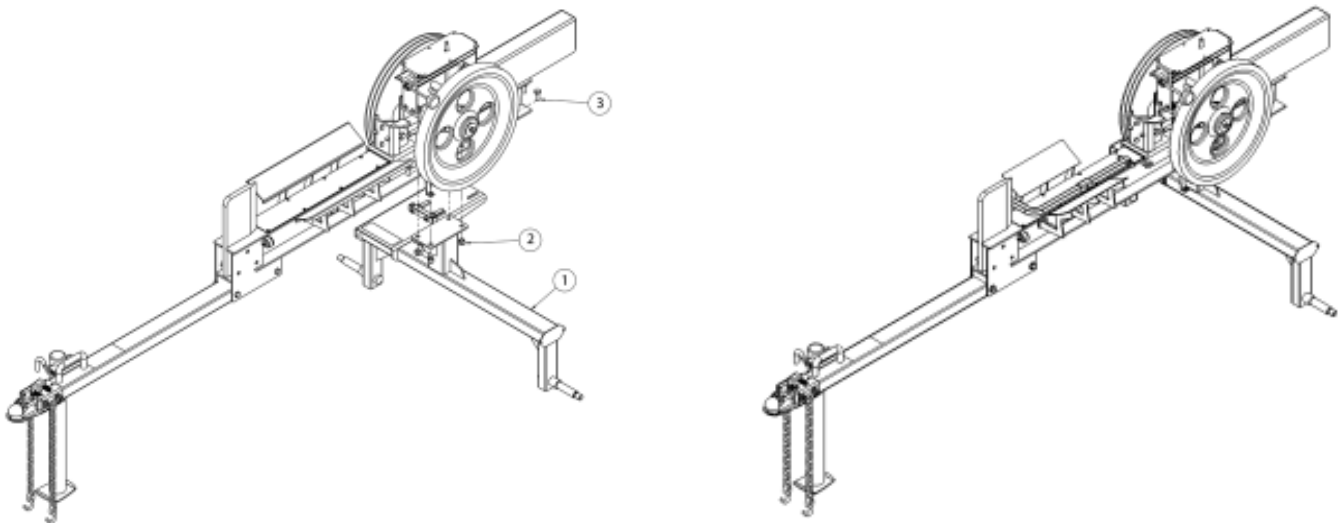
ITEM NO.	DESCRIPTION	QTY.
1	1/4" x 3/4" Bolt	9
2	1/4" Lock Washer	9
3	1/4" Flat Washer	9
4	Left Shroud	1
5	Right Shroud	1

STEP 2: Attach the tongue (2) to the beam assembly as shown in the diagram. Use the two 1/2" x 4-1/4" bolts (3) and the two 1/2"-13 UNC Nylock nuts (4). Tighten.



ITEM NO.	DESCRIPTION	QTY.
1	Tongue Assembly	1
2	1/2" x 4-1/4" Bolt	2
3	Complete Beam Assembly	1
4	1/2"-13 UNC Nylock Nut	2

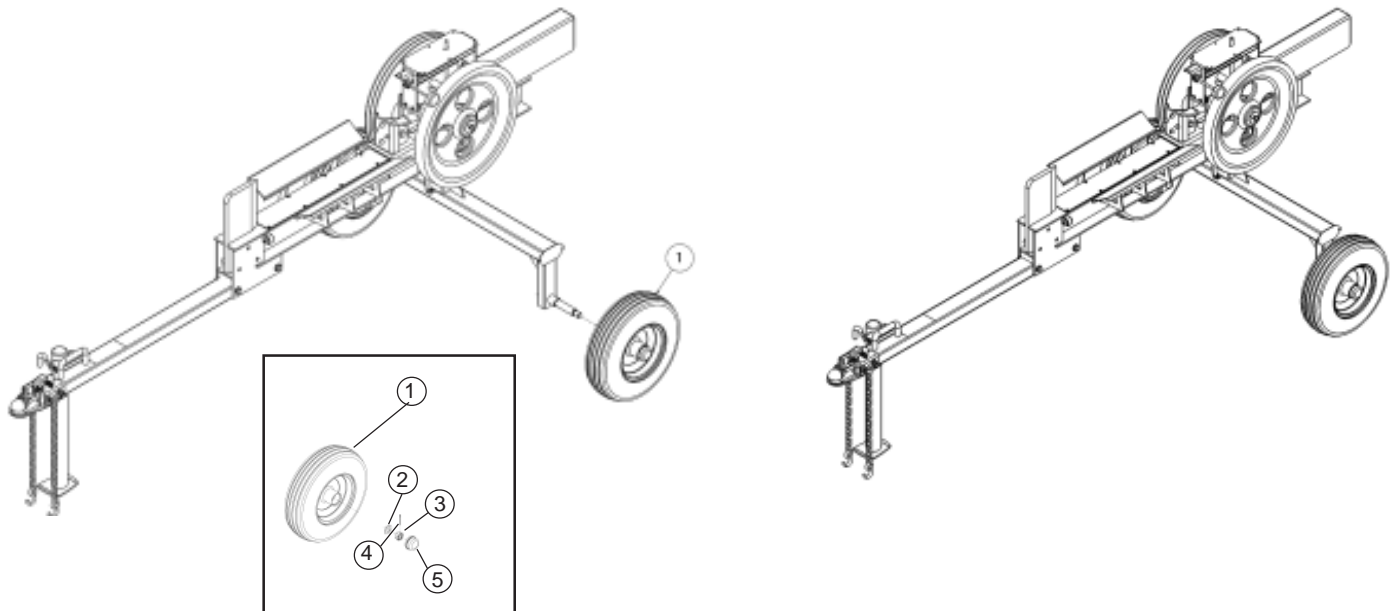
STEP 3: Attach the back frame (1) to the beam assembly using the four 1/2" x 1-1/4" bolts (3) and the four 1/2" Nylock nuts (2). Tighten.



ITEM NO.	DESCRIPTION	QTY.
1	Back Frame Assembly	1
2	1/2"-13 UNC Nylock Nut	4
3	1/2" x 1-1/4" Bolt	4

STEP 4: Attach the two wheels (1) to the spindles on the back frame assembly as shown in the diagram below.

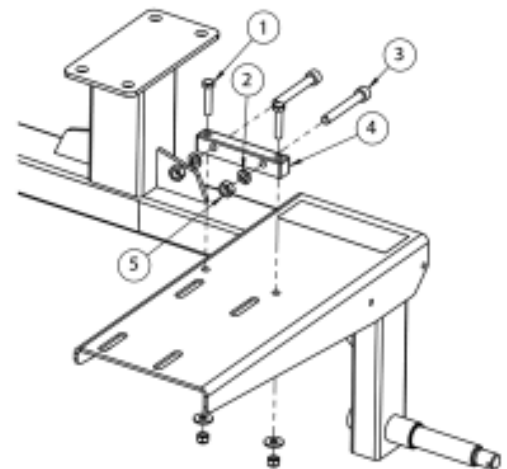
NOTE: If you removed the flywheels in Step 1, carefully reattach them after completing this step. Make sure that they are reattached exactly as shown in Step 1.



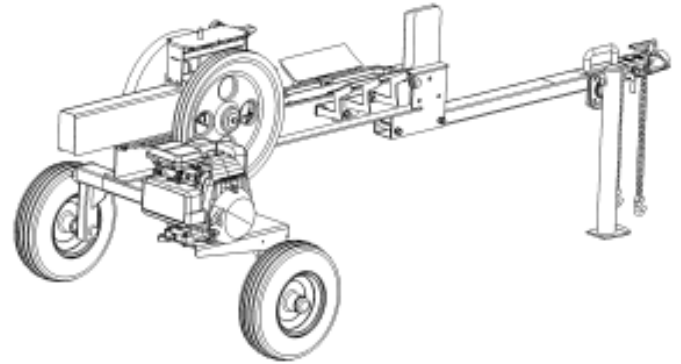
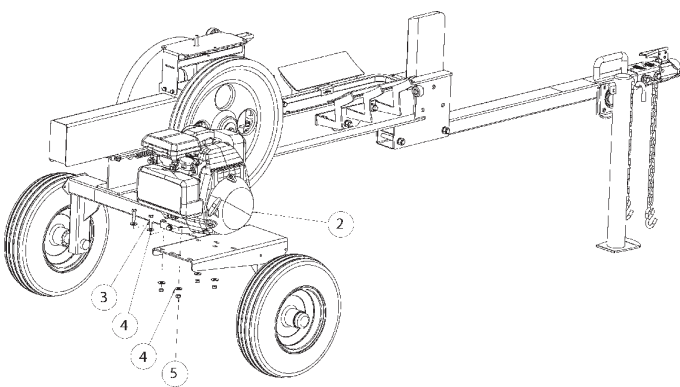
ITEM NO.	DESCRIPTION	QTY.
1	Wheel	2
2	3/4" Light Flat Washer	2
3	3/4" Slotted Nut	2
4	1/8" x 1-1/2" Cotter Pin	2
5	Hub Cap	2

STEP 5: Back the tensioner bolts (3) all the way out.

ITEM NO.	DESCRIPTION	QTY.
1	5/16" x 1-1/2" . Bolt	2
2	3/8 in. Regular Lock Washer	2
3	M10 x 1.5 x 75mm Metric Socket Head Screw	2
4	Tensioner Plate	1
5	M10 x 1.5 Nut	2

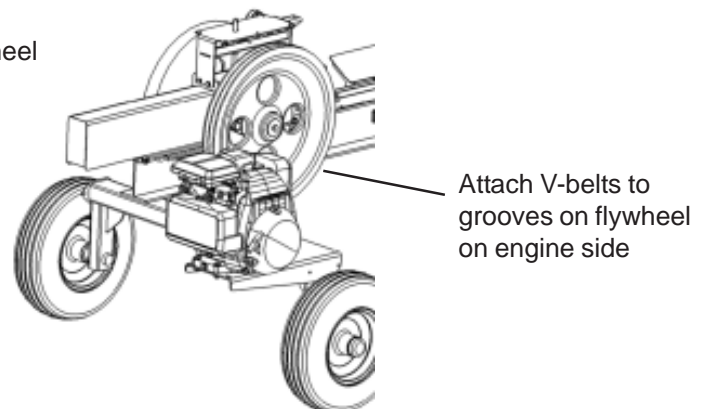
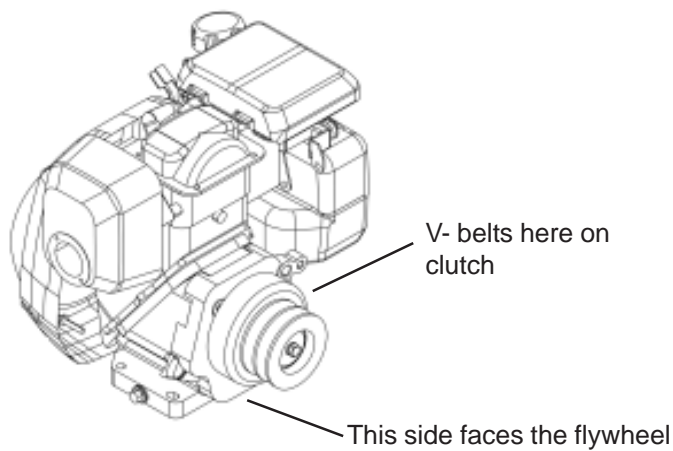


STEP 6: Make sure that the clutch is aligned with the flywheel. Then align the holes in the engine mounting plate on the back frame assembly with the holes on the bottom of the engine. Then mount the engine/clutch assembly (2) with the four 5/16" x 1-1/2" bolts (3), the eight 5/16" flat washers (4) and the four 5/16" nylock nuts (5). Leave bolts somewhat loose at this point.



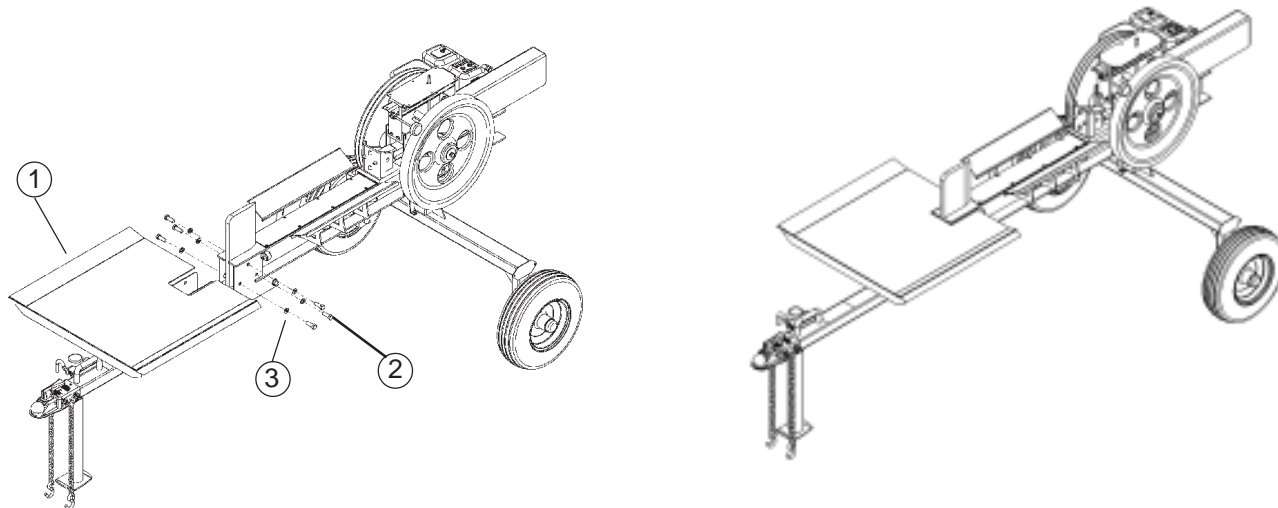
ITEM NO.	DESCRIPTION	QTY.
2	Engine/Clutch Assembly	1
3	5/16" x 1-1/2" Bolt	4
4	5/16" Flat Washer	8
5	5/16"-18 UNC Nylock Nut	4

STEP 7: Attach the two belts to the flywheel with the grooves. First put the belts on the clutch (shown below) and then on the flywheel turning it by hand until they are completely mounted.



STEP 8: After placing the belts on, align the clutch and belts to the flywheel and pull the engine so that the belts are taut. Then tighten the engine mounting bolts but not 100%. Use the tensioner bolts shown in Step 5 to tension the v-belts further. Make sure that you are tightening the correct bolts. Tightening the wrong bolts may twist the engine too far. Tighten the four engine mounting bolts to the frame assembly.

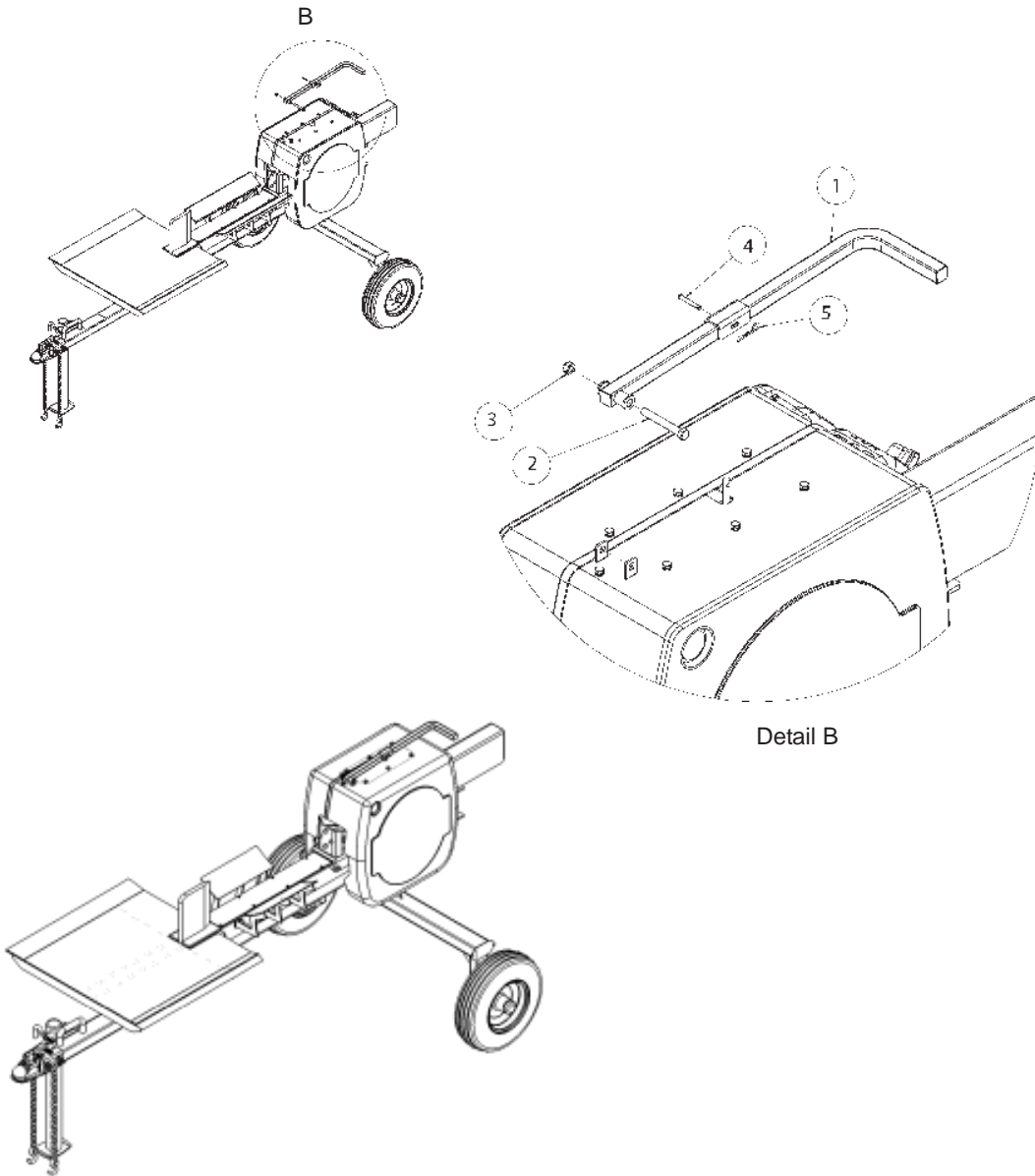
STEP 9: Attach the log catcher table (1) to the front of the beam/tongue as shown below using the three 1/2" x 1-3/8" bolts (2) and 1/2" regular lock washers (3). Tighten.



ITEM NO.	DESCRIPTION	QTY
1	Log Catcher	1
2	1/2" x 1-3/8" Bolt	6
3	1/2" Lock Washer	6

STEP 10: Reattach the two shroud halves removed in step 1 and the hardware. Use the nine 1/4" x 3/4" bolts (2) the nine 1/4" lock washers (2) and the nine 1/4" flat washers (3) to attach the shrouds. Tighten.

STEP 11: Attach the handle (1) to the top of the shroud using the hardware called out in the drawing below. Slide the 3/16" x 1-3/4" clevis pin (5) through the hole in the middle of the handle and the tab on the top center of the shroud. Secure with the 3/32" x 1" straight cotter pin (5). Attach the front of the handle (1) through the two tabs on top of the shroud using the 3/8" x 2-3/4" bolt (2) and 3/8" nylock nut (3). Tighten.



ITEM NO.	DESCRIPTION	QTY.
1	Handle Assembly	1
2	3/8" x 2-3/4" Bolt	1
3	3/8" Nylock Nut	1
4	3/16" x 1-1/4" Clevis Pin	1
5	1/4"-1/2" Hairpin Cotter Pin	1

OPERATION



NOTE: Make sure that the engine has oil and gas before starting. See your Kohler engine manual for recommendations on oil, starting and maintenance.

ENGINE OIL RECOMMENDATIONS (Kohler SH265)

For temperatures above 32 degrees F use an 10W-30 oil. Using mutigrade oil may increase oil consumption. Using SAE 30W oil below 40 degrees F will result in hard starting and possible engine bore damage. For temperatures below 32 degrees F use an SAE 5W-20 or SAE 5W-30 oil. Oil capacity is about 0.63 qt. (0.60 L)

STARTING INSTRUCTIONS (Kohler SH265)

- 1) Move the fuel lever to the "ON" position.
- 2) For a cold engine put the throttle control midway between "SLOW" and "FAST." Place the choke control into the "ON" position.
- 3) For retractable start engine turn engine ON/OFF switch to "ON." Slowly pull the starter handle to just past compression. STOP! Return starter handle. Pull firmly with a smooth steady motion until it starts.
- 4) Gradually return the choke control to the "OFF" position after the engine starts and warms up.
- 5) For a warm engine put the throttle control between "SLOW" and "FAST." A warm engine usually does not require the choke on.

STOPPING THE ENGINE

- 1) If possible, remove the load.
- 2) Move the throttle control to the "SLOW" or "LOW" idle position.
- 3) Turn key switch or on/off switch to "OFF." Move throttle to "STOP" position if equipped.
- 4) Close the fuel shut-off valve.

STEP 1: Set up the log splitter in a clear, level area and block the wheels. Disconnect the log splitter if it is attached to a towing vehicle.

STEP 2: Start the engine after making sure that it has an adequate oil and fuel supply. The throttle should be set at the maximum speed to develop the required power. Refer to Kohler engine manual for more detail.

STEP 3: Place a log on the beam cradle against the wedge.

STEP 4: With the engine running, push in the green safety button on the side of the shroud and push down on the control handle. Remove the split log and split the pieces in half if desired. The log splitter will not operate unless both hands are used to activate the ram.

STEP 5: Repeat steps 3 and 4 to continue with the next log.

TOWING:

This log splitter is equipped with pneumatic, road speed tires, a Class I coupler (2 in. diameter ball required) and safety chains. Before towing, the safety chains should be secured to the hitch or bumper of the vehicle. Local regulations should be checked regarding licensing, lights, towing, etc. Turn the fuel shut off valve (if so equipped) on the engine to the "OFF" position before towing this log splitter. Failure to do so may result in flooding the engine. Do not exceed 45 mph when towing this log splitter. Refer also to the Towing Safety section on page 6 of this manual.

MAINTENANCE



WARNING: *Never perform maintenance operations while the machine is running. Turn off the machine and disconnect the spark plug or starter before doing any maintenance or adjustments.*

- 1) Consult the operating and maintenance instructions from the engine manufacturer for proper engine care and maintenance.
- 2) Periodically check all nuts and bolts for tightness.
- 3) Periodically check v-belts for signs of wear and adjust tension if necessary.
- 4) The wedge can be sharpened if it becomes dull or nicked.
- 5) Keep the work table, beam, cradle and push plate free of wood pieces and debris.
- 6) The stainless steel slide plate should be cleaned periodically to reduce friction.

WARRANTY

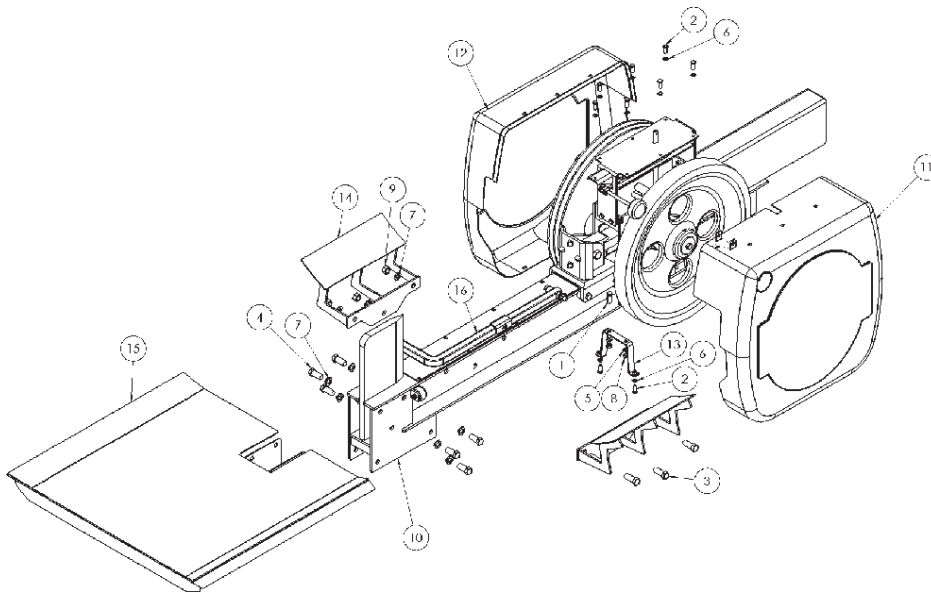
This machine is guaranteed to be free from defects in material and workmanship for the normal service life of the product not to exceed twelve consecutive months from the date of purchase. The Kohler engine is covered by a two year manufacturer's warranty. SpeeCo will repair or replace free of charge any part or parts of this product that are judged to be defective in material and workmanship during the limited warranty period stated above. The limited warranty does not cover parts that in the judgement of the manufacturer have been subjected to negligent use, misuse, alteration, accident, disassembled in any way or if repairs have been made by anyone except an authorized SpeeCo service center.

DISCLAIMER OF OTHER WARRANTIES: THIS LIMITED WARRANTY IS THE ONLY WARRANTY FOR THIS PRODUCT. SPEECO MAKES NO OTHER WARRANTY, EXPRESS OR IMPLIED, INCLUDING ANY IMPLIED WARRANTY OF MERCHANTABILITY OR FITNESS FOR A PARTICULAR PURPOSE, WITH RESPECT TO THIS PRODUCT. ALL SUCH WARRANTIES ARE EXPRESSLY DENIED.

LIMITATIONS OF LIABILITY: THERE IS NO LIABILITY FOR INCIDENTAL, CONSEQUENTIAL OR PUNITIVE DAMAGES IN CONNECTION WITH THE USE OF THIS PRODUCT, INCLUDING BUT NOT LIMITED TO LIABILITY FOR INJURY, LOSS OF LIFE, PROPERTY DAMAGE, LOSS OF USE, LOSS OF TIME, INCONVENIENCE OR COMMERCIAL LOSS. ANY AND ALL SUCH LIABILITY IS EXPRESSLY EXCLUDED. THESE LIMITATIONS OF LIABILITY APPLY TO ALL SUCH CLAIMS. IN NO EVENT SHALL SPEECO BE RESPONSIBLE FOR ANY AMOUNT EXCEEDING THE PURCHASE PRICE OF THIS PRODUCT.

You can register this product online at www.speeeco.com. Click on Warranty/Manuals on the home page and follow the instructions to complete the warranty registration process.

REPLACEMENT PARTS



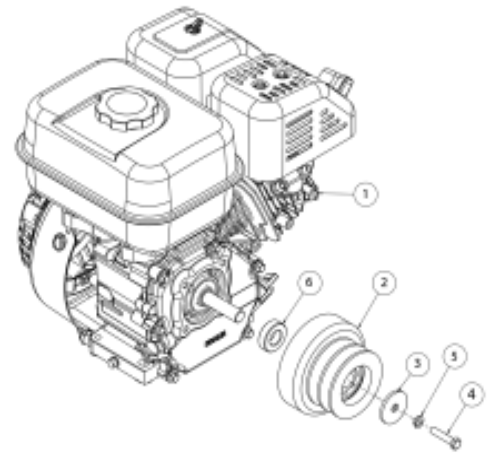
ITEM NO.	PART NO.	DESCRIPTION	QTY.
1	O/L	5/16" X 1" GR5 Bolt	2
2	O/L	1/4" x 3/4" GR5 Bolt	9
3	O/L	1/2" x 1-3/8" GR5 Bolt	3
4	O/L	1/2" x 1-1/4" GR2 Bolt	6
5	O/L	5/16" Lock Washer	2
6	O/L	1/4" Lock Washer	9
7	O/L	1/2" Lock Washer	9
8	O/L	5/16" Hex Nut	2
9	O/L	1/2" Hex Nut	3
10	S40172200	Beam Only	1
11	S401727A0	Shroud, Right Half	1
12	S401728A0	Shroud, Left Half	1
13	S40170900	Shroud Attachment	1
14	S40170700	Log Cradle	2
15	S40170600	Log Catcher Table	1
16	S401708B0	Handle with Hardware	1

O/L- Obtain locally. Common fasteners available through hardware and farm stores.

Clutch Replacement Parts

ITEM NO.	PART NO.	DESCRIPTION	QTY.
1	S39055000	Kohler SH265 Engine	1
2	S40170500	Clutch	1
3	S4375-1	Clutch Hold Washer	1
4	O/L	5/16" x 1-1/2" UNF Bolt	1
5	O/L	5/16" Regular Lock Washer	1
6	S40174400	Clutch Spacer Collar	1

O/L- Obtain locally. Common fasteners available through hardware and farm stores.



ADDITIONAL REPLACEMENT PARTS (not shown)

S401724A0	Rack Assembly
S401712A0	Rack Press Assembly
S40173600	Roller Assembly
S40171800	Handle Lock
S40173000	Gear
S40173900	Wear Plate
S40173400	Slide Plate
S40172300	Push Plate
S401702A0	Tongue Weldment
S40171400	Push Knob
S40170300	Back Frame Weldment
S40173800	Spring Plate
S3508-1	Heavy Duty Compression Spring
S4605-1	Bearing Enclosure
S40173100	Flange Mount Bearing
S40171100	19mm OD Needle Bearing
S40172500	30mm OD Bearing
S40173500	Return Extension Spring
S40171900	Belt Tensioner
S4586-1	Tensioner Plate
S40173200	Bumper
S3507-1	Bumper Cap
S17230000	1/4" Hook Bolt
S40173300	Rack Locator
S40172900	Fly Wheel
S401729A0	Fly Wheel with Groove
S40174700	V-Belt
S40170500	Clutch
S400312B0	Wheel
S40170500	Handle Assembly
S40033200	Safety Chain
S40170700	Log Cradle
S401712A0	3/4" Slotted Nut for Wheel
S39055000	Kohler SH265 engine
S40034600	Hitch Ball Coupler
S40032300	Safety Chain
S40174400	Clutch Space Collar

For additional information please contact SpeeCo Customer Service at 1-800-525-8322

IMPORTANT NOTICE

We, the manufacturer, reserve the right to change the product and/or specifications in this manual without notification. The manual is for information usage only and the pictures and drawings depicted herein are for reference only.

== NOTES ==

Warranty Repair and Service

Do not return this product to the store for warranty issues or repair. Call 1-800-525-8322 for the location of the nearest service center.

Record the information below for future reference.

Model No. _____

Date of Purchase _____

Place of Purchase _____

SPECIFICATIONS

Engine	Kohler SH265 196cc
Maximum Impact Force	Up to 28 Tons*
Maximum Log Length	24"
Cycle Time	2.5 Seconds*
Wheels	8 "Road Speed
Wedge	8" High
Stand	Flip-Up
Beam	4" x 6"
Length	110"
Width	49"
Height	44"
Weight	590 lbs.

*Tonnage and cycle time may vary dependent upon mechanical and environmental conditions.



A brand of Blount International
15000 W. 44th Ave. Golden Colorado 80403
303-279-5544 Fax 303-278-3432
Web: www.speeco.com